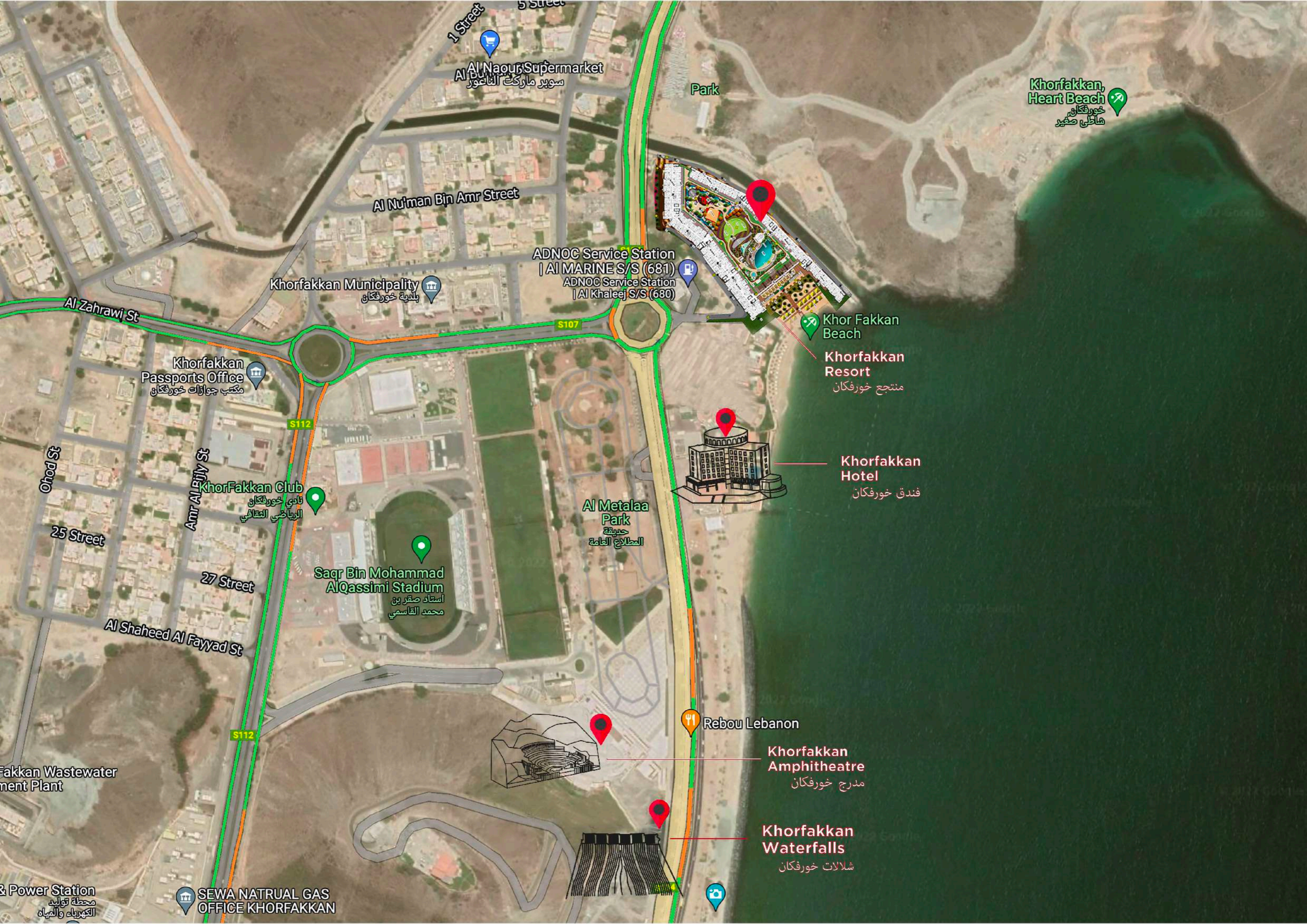


منتجع خورفكان  
KHORFAKKAN RESORT

An aerial photograph of a beach. The left side shows a wide expanse of golden sand. A person is walking on the sand, leaving a long shadow. The right side shows the ocean with clear turquoise water and white foam from waves breaking onto the shore.

متعة العيش  
على الشاطئ





1 Street  
5 Street  
Al Naour Supermarket  
سوبر ماركت الناعور

Khorfakkan, Heart Beach  
خورفكان  
شاطئ صفيير

Al Nu'man Bin Amr Street

ADNOC Service Station | AI MARINE S/S (681)  
ADNOC Service Station | AI Khaleej S/S (680)

Khorfakkan Municipality  
بلدية خورفكان

Al Zahrawi St

Khorfakkan Passports Office  
مكتب جوازات خورفكان

Khor Fakkan Beach

Khorfakkan Resort  
منتجع خورفكان

S112

S107

Ohod St

Amr Al Biny St

KhorFakkan Club  
نادي خورفكان  
الرياضي الثقافي

Al Metalaa Park  
حديقة  
المطالع العامة

Khorfakkan Hotel  
فندق خورفكان

25 Street

27 Street

Saqr Bin Mohammad AlQassimi Stadium  
استاد صقر بن  
محمد القاسمي

Al Shaheed Al Fayyad St

Fakkan Wastewater Treatment Plant

Rebou Lebanon

Khorfakkan Amphitheatre  
مدرج خورفكان

Khorfakkan Waterfalls  
شلالات خورفكان

& Power Station  
محطة توليد  
الكهرباء والمياه

SEWA NATRUAL GAS OFFICE KHORFAKKAN



بالإضافة لمجموعه متنوعه من وسائل  
الراحة والرعاية العصرية، كما يقدم  
فرصة فريدة لتجربة حياة شاطئية مميزة

يتميز المشروع بشاطئ خاص و بإطلالات لا  
مثيل لها على البحر الفيروزي والجبال الرائعة  
والمناظر الخلابة.

يجمع المشروع بين روعة وسحر شاطئ  
خورفكان ، وتصميم معماري أنيق  
مستوحى من الثقافة المعمارية الحديثة.

## شاطئ خاص

# فخامة ورفاهية السكن



مخرج إلى  
شارع الكورنيش



شاطئ  
خاص



مساح مفتوحة  
بمناظر طبيعية



واجهات  
بحرية



حالة  
ألعاب رياضية



منطقة  
ألعاب أطفال



قاعات  
متعددة الأغراض



19  
متجر متنوع



573  
وحدة سكنية



9  
مبانٍ سكنية



# التصاميم الداخلية



كافة أطقم الأثاث والإكسسوارات والأجهزة والديكورات المُمبينة في الصور لأغراض توضيحية فقط، ولن يتم تقديمها مع الشقق ووحدات البنتهاوس الخاصة بالمشروع.

نماذج

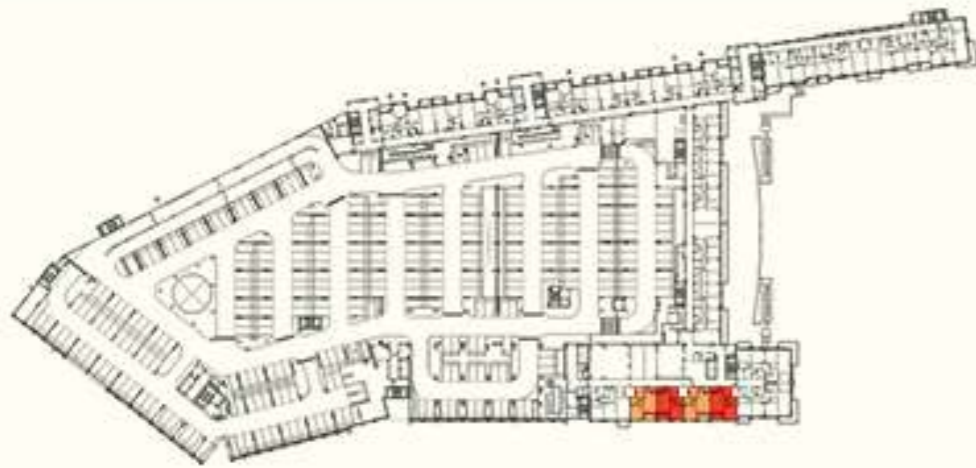
من الشقق المكوّنة من

غرفة وصالة

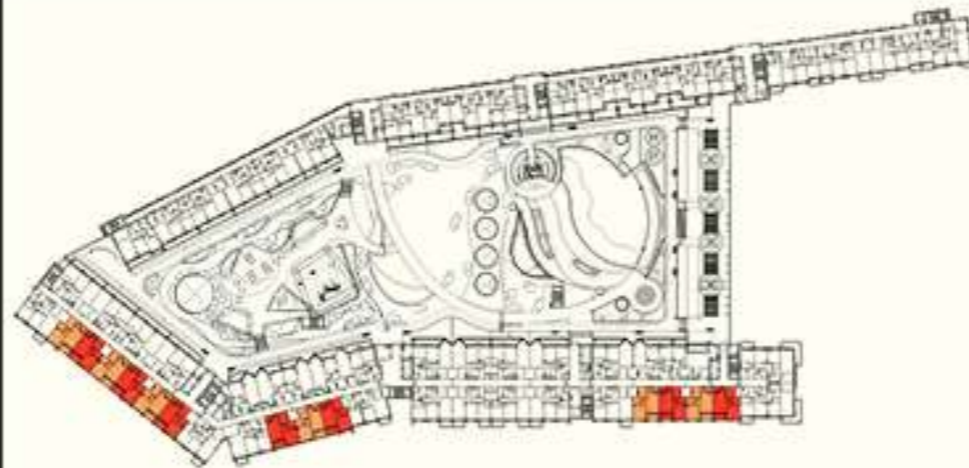
غرفتين وصالة

ثلاث غرف وصالة

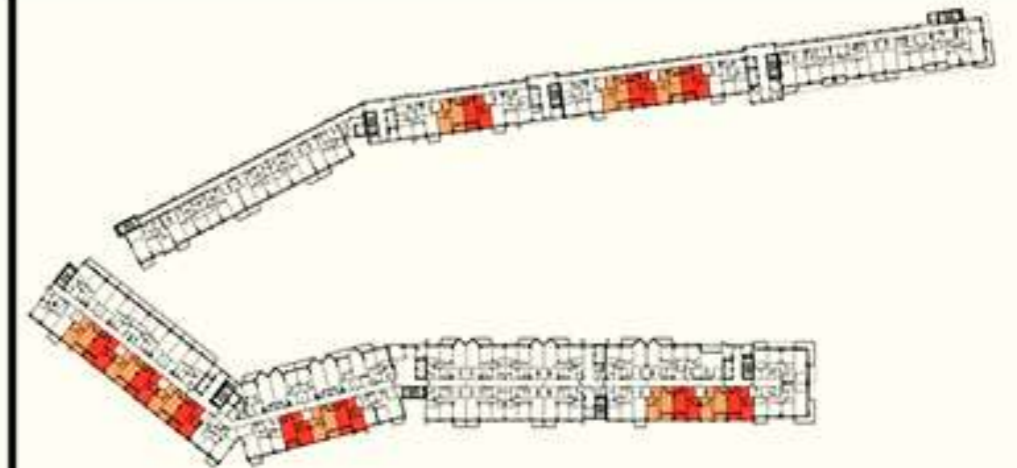
# غرفة وصالة - نموذج A (R1 - A)



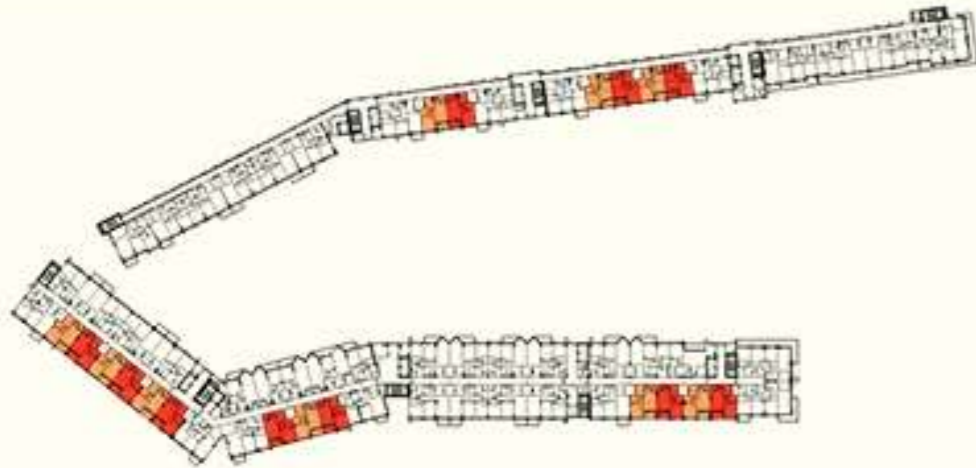
FIRST & SECOND PODIUM FLOOR  
FLATS NO. : P114 TO P117, P214 TO P217



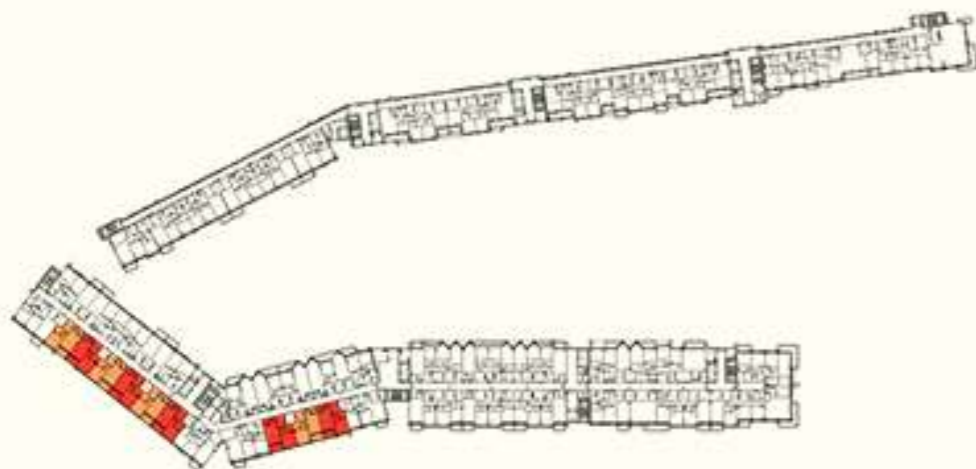
FIRST FLOOR  
FLATS NO. : 126 TO 131, 139 TO 141, 156 TO 159



TYPICAL 2ND TO 3RD & 5TH TO 8TH FLOOR  
FLATS NO. : 206 TO 209, 212 TO 213, 226 TO 231, 239 TO 241, 256 TO 259, 306 TO 309, 312 TO 313, 326 TO 331, 339 TO 341, 356 TO 359, 506 TO 509, 512 TO 513, 526 TO 531, 539 TO 541, 556 TO 559, 606 TO 609, 612 TO 613, 626 TO 631, 639 TO 641, 656 TO 659, 706 TO 709, 712 TO 713, 726 TO 731, 739 TO 741, 756 TO 759, 806 TO 809, 812 TO 813, 826 TO 831, 839 TO 841, 856 TO 859



FOURTH FLOOR  
FLATS NO. : 406 TO 409, 412 TO 413, 426 TO 431, 439 TO 441, 456 TO 459

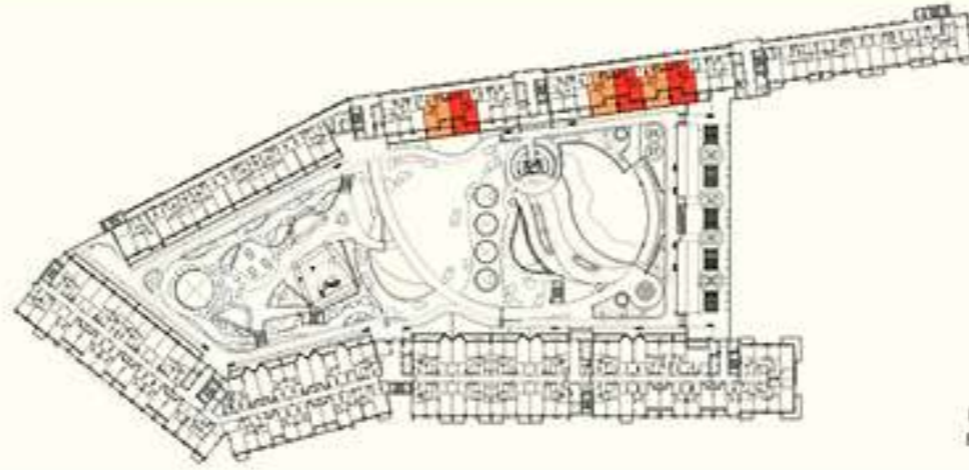


NINTH FLOOR  
FLATS NO. : 919 TO 924, 932 TO 934



FLAT TYPE	= 1 BEDROOM - TYPE A (R1-A)
NO. OF UNITS	= 163
FLAT AREA (W/O BALCONY)	= FROM 65.00 SQ.M. / 700.00 SQ.FT. TO 69.00 SQ.M. / 763.00 SQ.FT.
BALCONY AREA	= FROM 6.50 SQ.M. / 70.00 SQ.FT. TO 7.50 SQ.M. / 81.00 SQ.FT.
TOTAL NET AREA =	= FROM 72.00 SQ.M. / 775.00 SQ.FT. TO 76.00 SQ.M. / 818.00 SQ.FT.

## غرفة وصالة - نموذج B (R1 - B)

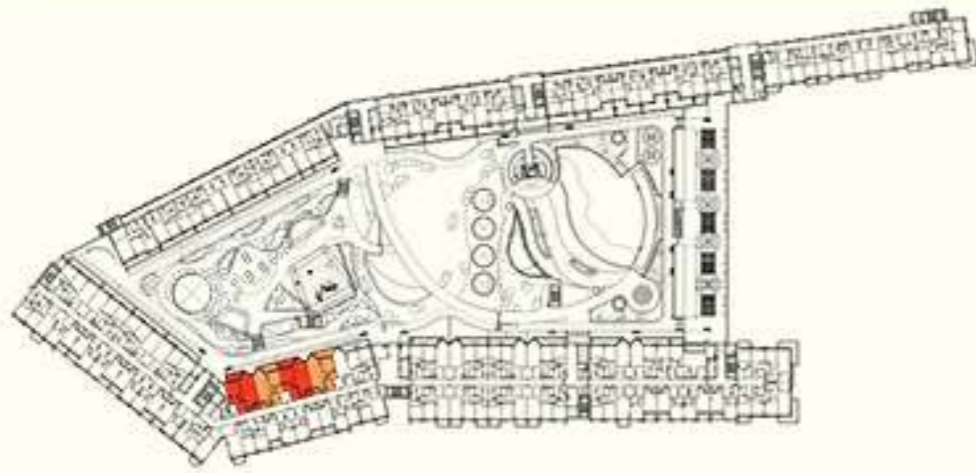


FIRST FLOOR  
FLATS NO. : 106 TO 109, 112 TO 113

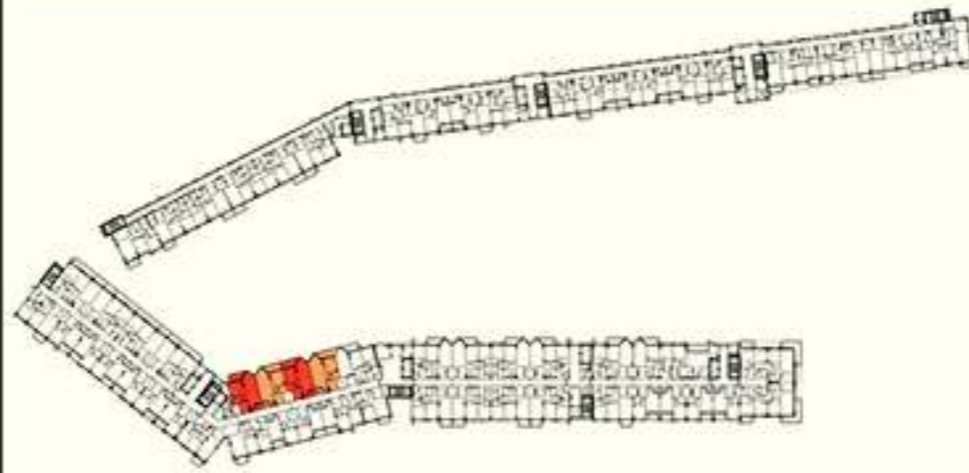


FLAT TYPE	= 1 BEDROOM - TYPE B (R1-B)
NO. OF UNITS	= 6
FLAT AREA (W/O BALCONY)	= FROM 65.00 SQ.M. / 700.00 SQ.FT. TO 67.00 SQ.M. / 721.00 SQ.FT.
BALCONY AREA	= FROM 27.70 SQ.M. / 298.00 SQ.FT. TO 28.30 SQ.M. / 305.00 SQ.FT.
TOTAL NET AREA =	= FROM 93.00 SQ.M. / 1,001.10 SQ.FT. TO 94.00 SQ.M. / 1012.00 SQ.FT.

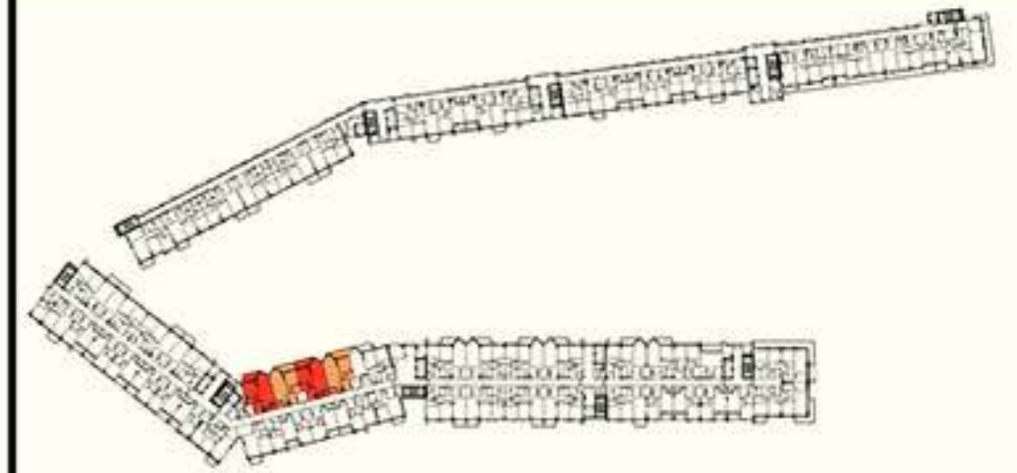
## غرفة وصالة - نموذج C (R1 - C)



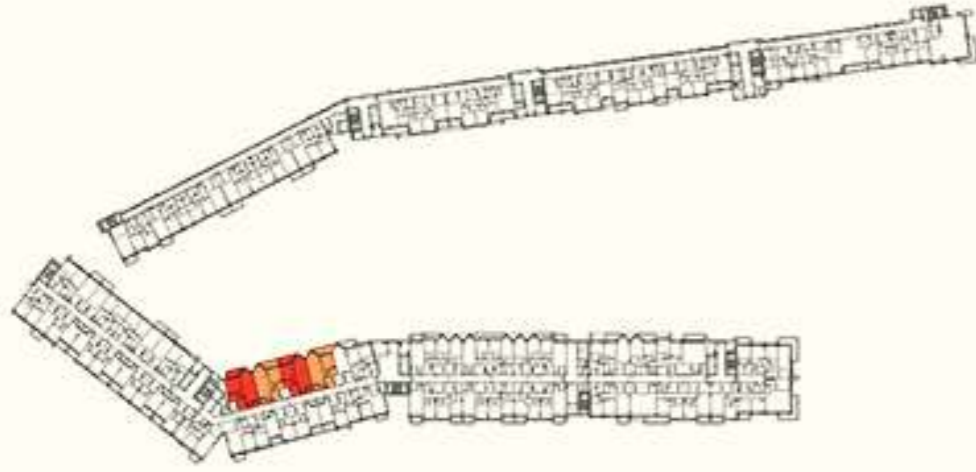
FIRST FLOOR  
FLATS NO. : 133 TO 136



TYPICAL 2ND TO 3RD & 5TH TO 8TH FLOOR  
FLATS NO. : 233 TO 236, 333 TO 336, 533 TO 536, 633 TO 636, 733 TO 736, 833 TO 836



FOURTH FLOOR  
FLATS NO. : 433 TO 436

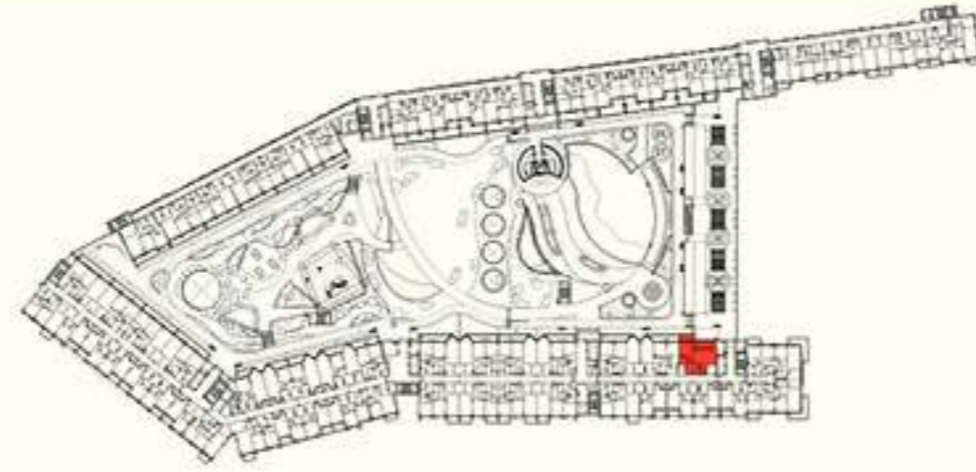


NINTH FLOOR  
FLATS NO. : 926 TO 929



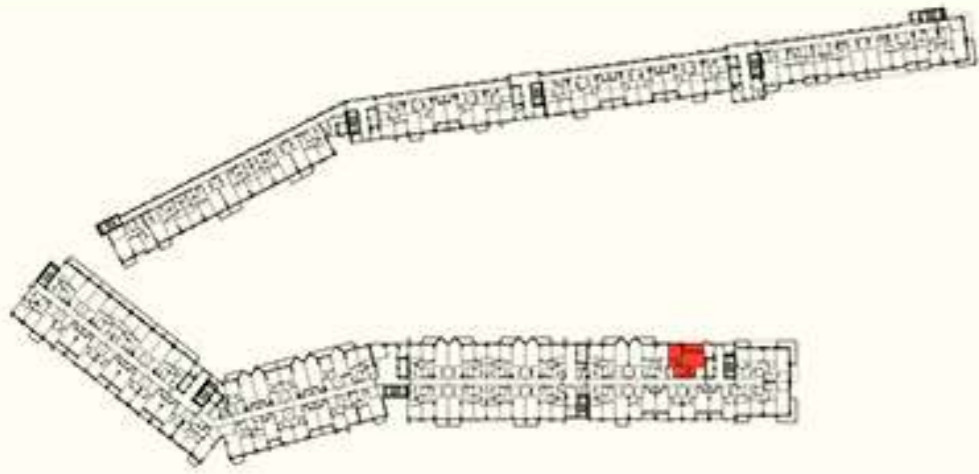
FLAT TYPE	= 1 BEDROOM - TYPE C (R1-C)
NO. OF UNITS	= 36
FLAT AREA (W/O BALCONY)	= FROM 78.00 SQ.M. / 840.00 SQ.FT. TO 82.00 SQ.M. / 883.00 SQ.FT.
BALCONY AREA	= FROM 9.00 SQ.M. / 97.00 SQ.FT. TO 12.00 SQ.M. / 129.00 SQ.FT.
TOTAL NET AREA =	= FROM 88.00 SQ.M. / 947.00 SQ.FT. TO 91.00 SQ.M. / 980.00 SQ.FT.

## غرفة وصالة - نموذج D (R1 - D)

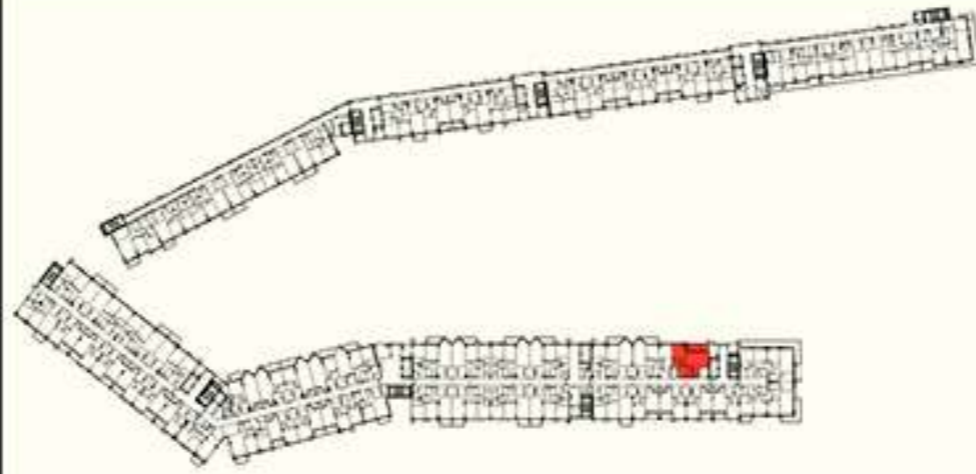


FLAT TYPE	= 1 BEDROOM - TYPE D (R1-D)
NO. OF UNITS	= 1
FLAT AREA (W/O BALCONY)	= 80.13 SQ.M. / 863.00 SQ.FT.
BALCONY AREA	= 20.94 SQ.M. / 225.00 SQ.FT.
TOTAL NET AREA =	= 101.07 SQ.M. / 1,088.00 SQ.FT.

## غرفة وصالة - نموذج E (R1 - E)



TYPICAL 2ND TO 3RD & 5TH TO 8TH FLOOR  
FLATS NO. : 253, 353, 553, 653, 753, 853

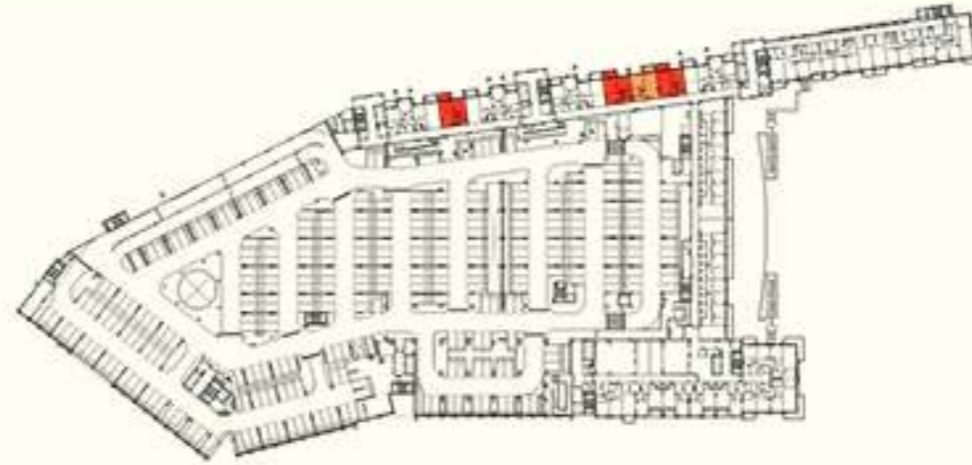


FOURTH FLOOR  
FLAT NO. : 453



FLAT TYPE	= 1 BEDROOM - TYPE E (R1-E)
NO. OF UNITS	= 7
FLAT AREA (W/O BALCONY)	= 80.13 SQ.M. / 863.00 SQ.FT.
BALCONY AREA	= 12.18 SQ.M. / 131.00 SQ.FT.
TOTAL NET AREA =	= 92.31 SQ.M. / 994.00 SQ.FT.

## غرفة وصالة - نموذج F (R1 - F)

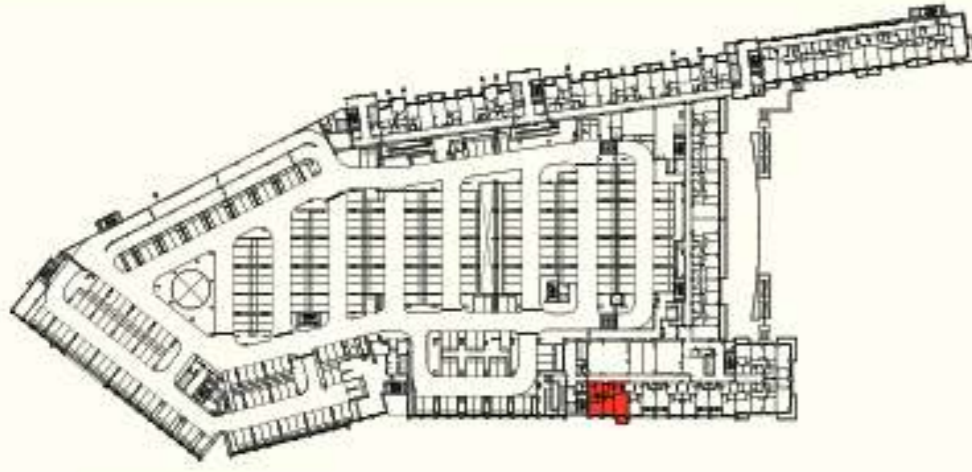


FIRST & SECOND PODIUM FLOOR  
FLATS NO. : P106 TO P108, P111, P206 TO P208, P211

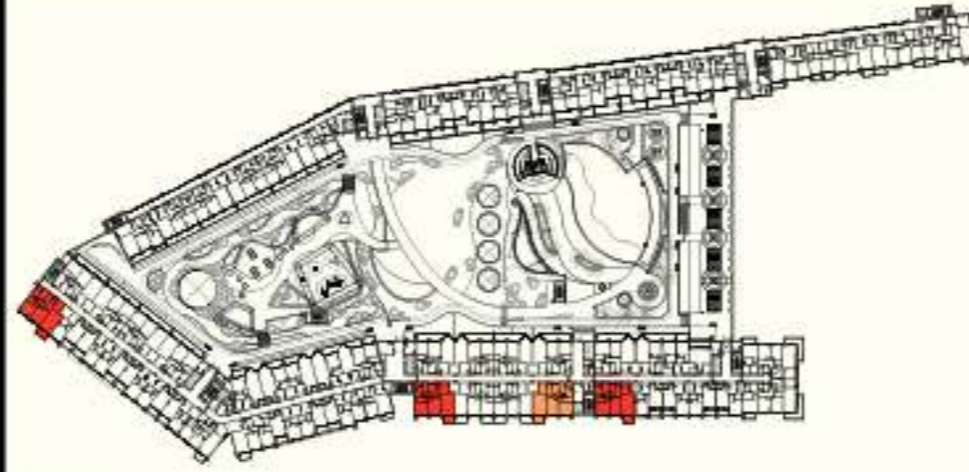


FLAT TYPE	= 1 BEDROOM - TYPE F (R1-F)
NO. OF UNITS	= 8
FLAT AREA (W/O BALCONY)	= FROM 61.00 SQ.M. / 657.00 SQ.FT. TO 63.00 SQ.M. / 678.00 SQ.FT.
BALCONY AREA	= FROM 7.20 SQ.M. / 78.00 SQ.FT. TO 7.70 SQ.M. / 83.00 SQ.FT.
TOTAL NET AREA =	= FROM 69.00 SQ.M. / 743.00 SQ.FT. TO 70.00 SQ.M. / 753.00 SQ.FT.

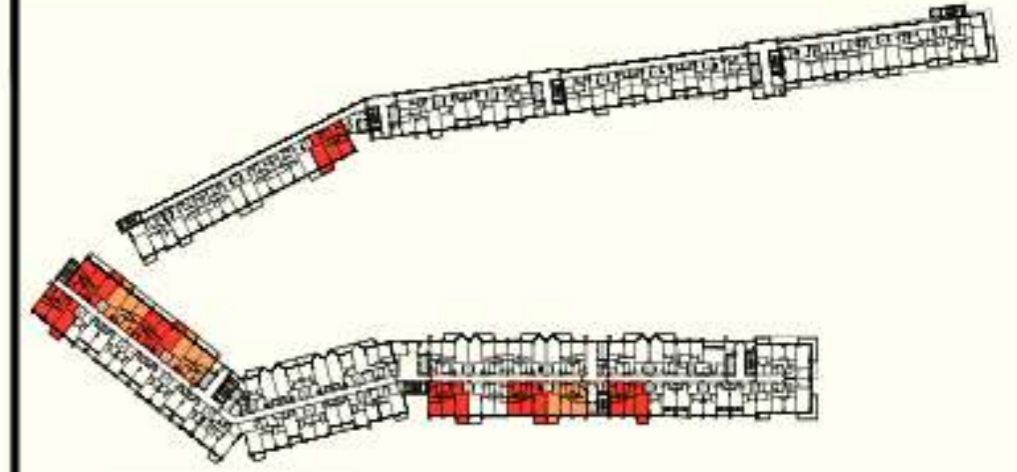
# غرفتين وطالة - نموذج A (R2 - A)



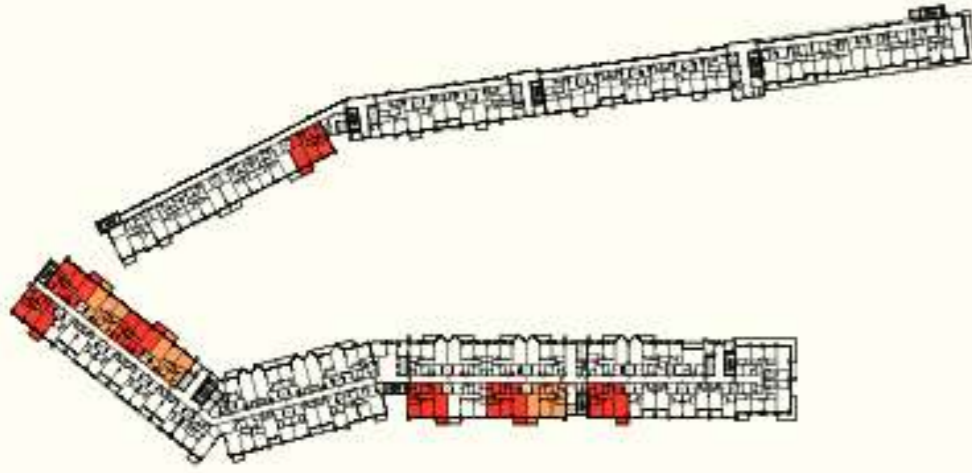
FIRST & SECOND PODIUM FLOOR  
FLATS NO. : P113 & P213



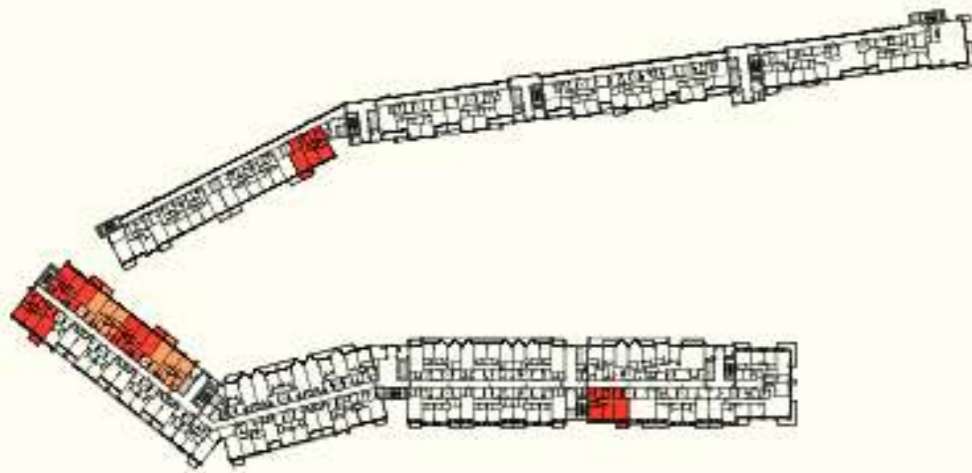
FIRST FLOOR  
FLATS NO. : 125, 147, 150, 155



TYPICAL 2ND TO 3RD & 5TH TO 8TH FLOOR  
FLATS NO. : 215, 221 TO 225, 247, 249, 250, 255, 315, 321 TO 325, 347, 349, 350, 355, 515, 521 TO 525, 547, 549, 550, 555, 615, 621 TO 625, 647, 649, 650, 655, 715, 721 TO 725, 747, 749, 750, 755, 815, 821 TO 825, 847, 849, 850, 855



FOURTH FLOOR  
FLATS NO. : 415, 421 TO 425, 447, 449, 450, 455

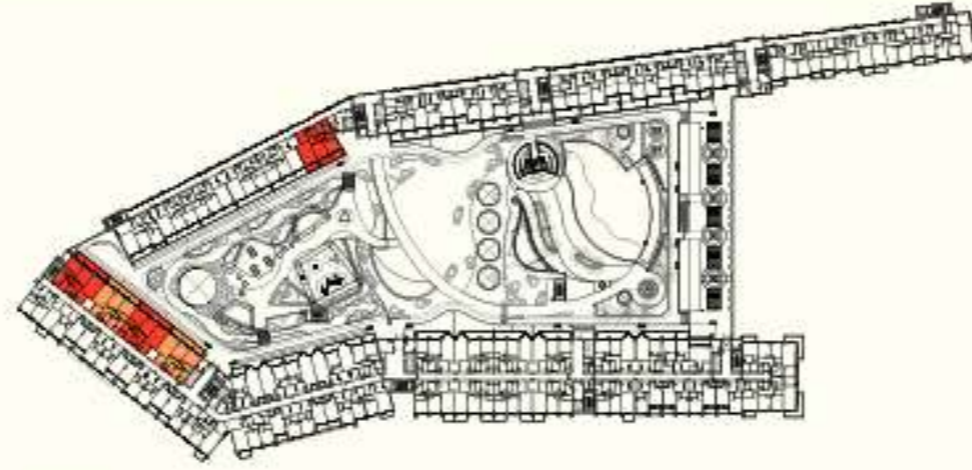


NINTH FLOOR  
FLATS NO. : 508, 514 TO 518, 545



FLAT TYPE	= 2 BEDROOM - TYPE A (R2-A)
NO. OF UNITS	= 83
FLAT AREA (W/O BALCONY)	= FROM 107.00 SQ.M. / 1,150.00 SQ.FT. TO 116.00 SQ.M. / 1,249.00 SQ.FT.
BALCONY AREA	= FROM 7.00 SQ.M. / 75.00 SQ.FT. TO 8.00 SQ.M. / 86.00 SQ.FT.
TOTAL NET AREA =	= FROM 114.00 SQ.M. / 1,227.00 SQ.FT. TO 124.00 SQ.M. / 1,335.00 SQ.FT.

## غرفتين وحالة - نموذج B (R2 - B)

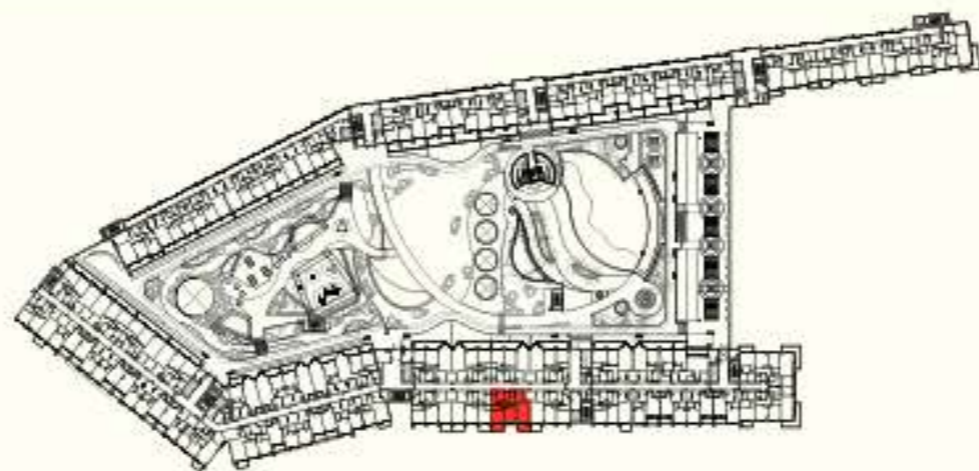


FIRST FLOOR  
FLATS NO. : 115, 121 TO 124



FLAT TYPE	= 2 BEDROOM - TYPE B (R2-B)
NO. OF UNITS	= 5
FLAT AREA (W/O BALCONY)	= FROM 111.00 SQ.M. / 1,185.00 SQ.FT. TO 116.00 SQ.M. / 1,249.00 SQ.FT.
BALCONY AREA	= FROM 24.00 SQ.M. / 258.00 SQ.FT. TO 25.00 SQ.M. / 269.00 SQ.FT.
TOTAL NET AREA =	= FROM 136.00 SQ.M. / 1,460.00 SQ.FT. TO 140.00 SQ.M. / 1,507.00 SQ.FT.

## غرفتين وصالة - نموذج C (R2 - C)

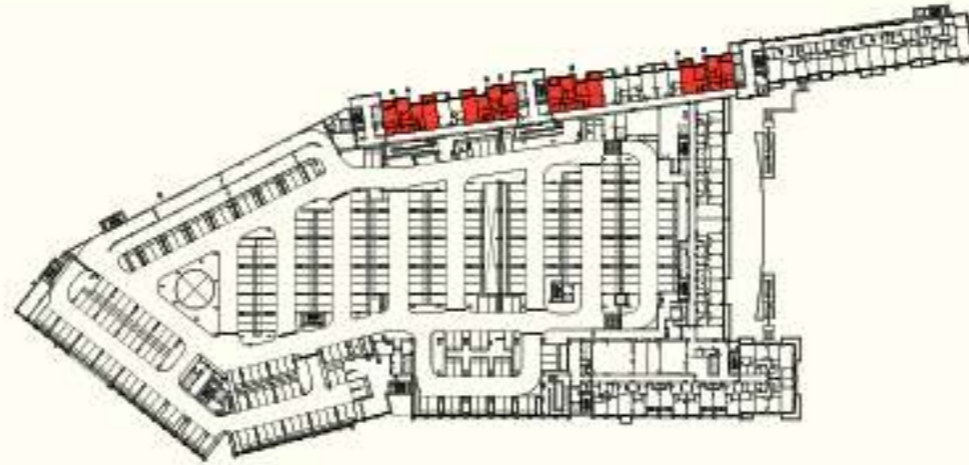


FIRST FLOOR  
FLAT NO. : 149



FLAT TYPE	= 2 BEDROOM - TYPE C (R2-C)
NO. OF UNITS	= 1
FLAT AREA (W/O BALCONY)	= 108.83 SQ.M. / 1,151.00 SQ.FT.
BALCONY AREA	= 14.73 SQ.M. / 159.00 SQ.FT.
TOTAL NET AREA =	= 121.88 SQ.M. / 1,310.00 SQ.FT.

## غرفتين وصالة - نموذج (R2 - D) D

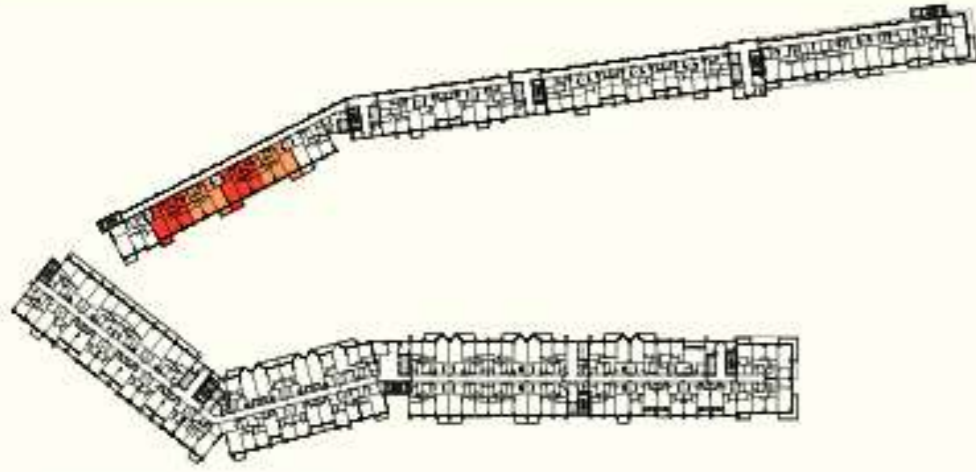


FIRST & SECOND PODIUM FLOOR  
FLATS NO.: P105, P109, P110, P112, P205, P209, P210, P212

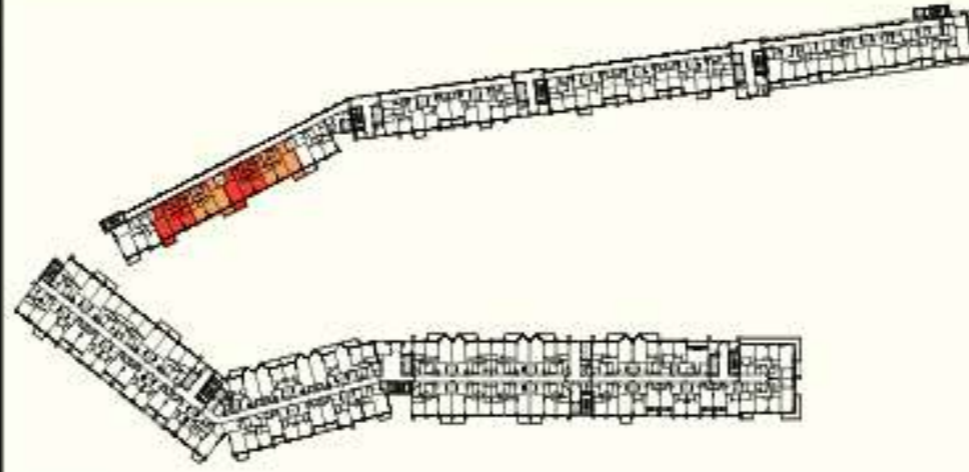


FLAT TYPE	= 2 BEDROOM - TYPE D (R2-D)
NO. OF UNITS	= 8
FLAT AREA (W/O BALCONY)	= FROM 131.00 SQ.M. / 1,410.00 SQ.FT. TO 134.00 SQ.M. / 1,442.00 SQ.FT.
BALCONY AREA	= FROM 13.00 SQ.M. / 140.00 SQ.FT. TO 15.00 SQ.M. / 162.00 SQ.FT.
TOTAL NET AREA =	= FROM 145.00 SQ.M. / 1,561.00 SQ.FT. TO 149.00 SQ.M. / 1,604.00 SQ.FT.

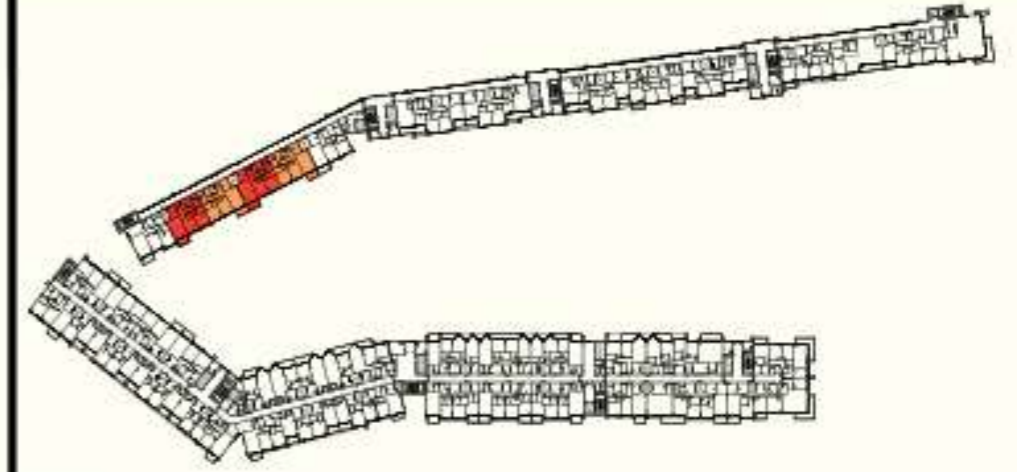
## غرفتين وصالة - نموذج E (R2 - E)



TYPICAL 2ND TO 3RD & 5TH TO 8TH FLOOR  
FLATS NO. : 216 TO 219, 316 TO 319, 516 TO 519, 616 TO 619, 716 TO 719, 816 TO 819



FOURTH FLOOR  
FLATS NO. : 416 TO 419

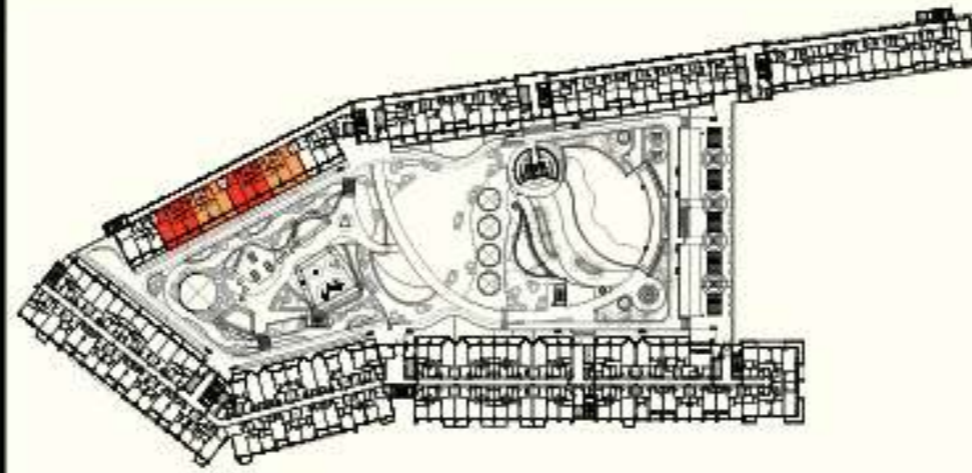


NINTH FLOOR  
FLATS NO. : 909 TO 912



FLAT TYPE	= 2 BEDROOM - TYPE E (R2-E)
NO. OF UNITS	= 32
FLAT AREA (W/O BALCONY)	= FROM 107.00 SQ.M. / 1,152.70 SQ.FT. TO 110.00 SQ.M. / 1,184.00 SQ.FT.
BALCONY AREA	= FROM 7.40 SQ.M. / 80.00 SQ.FT. TO 7.60 SQ.M. / 82.00 SQ.FT.
TOTAL NET AREA =	= FROM 114.00 SQ.M. / 1,227.00 SQ.FT. TO 117.00 SQ.M. / 1,259.00 SQ.FT.

## غرفتين وصالة - نموذج F (R2 - F)

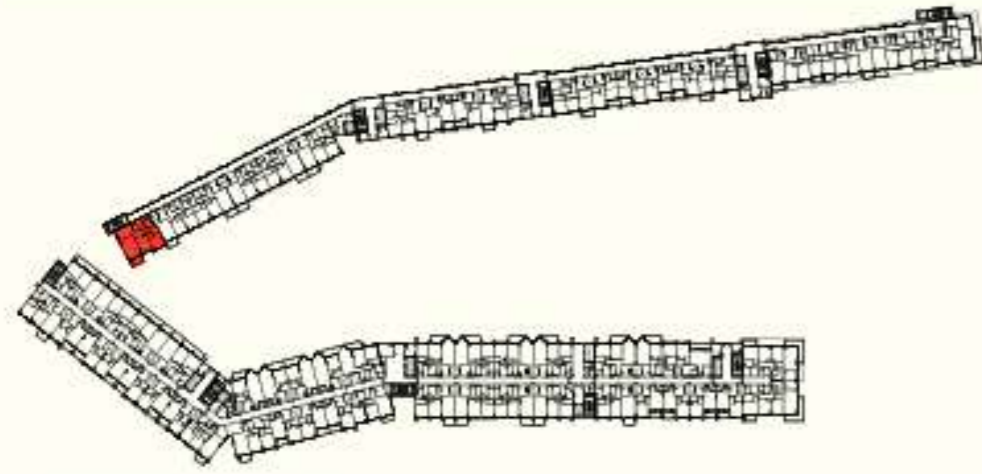


FIRST FLOOR  
FLATS NO. :116 TO 119

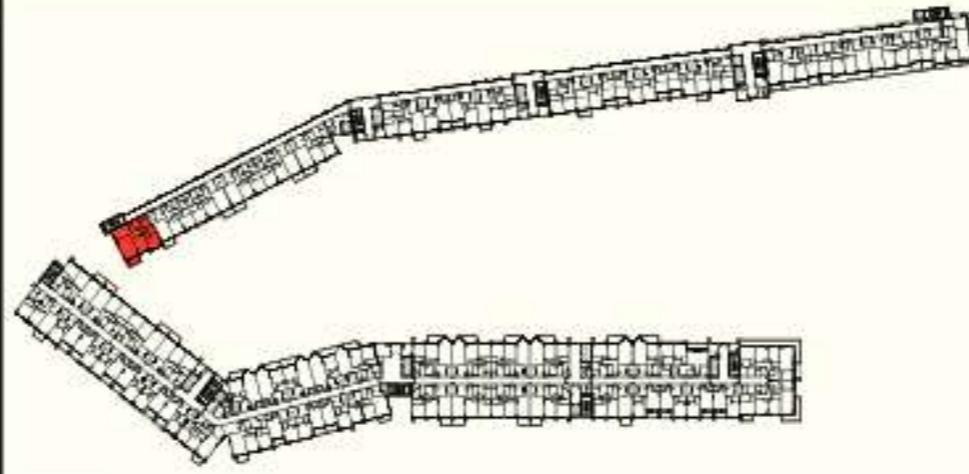


FLAT TYPE	= 2 BEDROOM - TYPE F (R2-F)
NO. OF UNITS	= 4
FLAT AREA (W/O BALCONY)	= FROM 107.00 SQ.M. / 1,150.00 SQ.FT. TO 110.00 SQ.M. / 1,184.00 SQ.FT.
BALCONY AREA	= FROM 23.00 SQ.M. / 248.00 SQ.FT. TO 24.00 SQ.M. / 258.00 SQ.FT.
TOTAL NET AREA =	= FROM 131.00 SQ.M. / 1,410.00 SQ.FT. TO 134.00 SQ.M. / 1,442.00 SQ.FT.

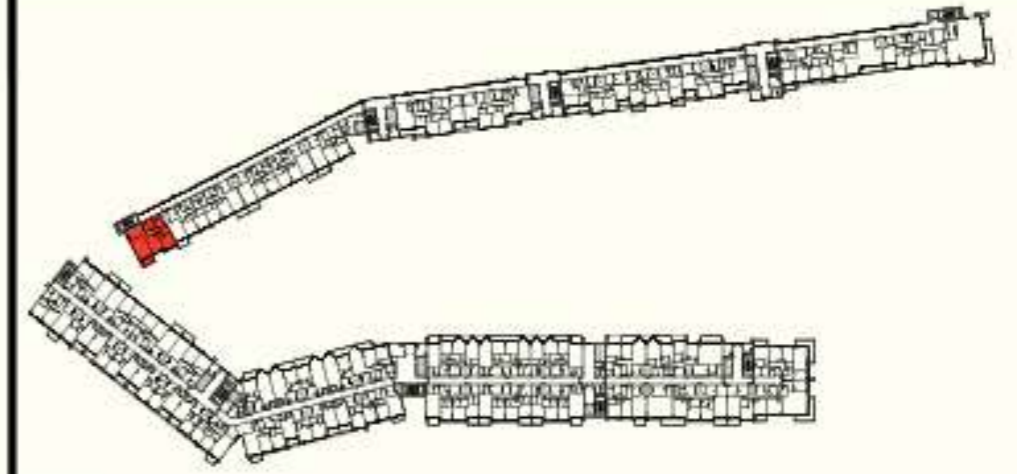
## غرفتين وصاله - نموذج G (R2 - G)



TYPICAL 2ND TO 3RD & 5TH TO 8TH FLOOR  
FLATS NO. : 220, 320, 520, 620, 720, 820



FOURTH FLOOR  
FLAT NO. : 420

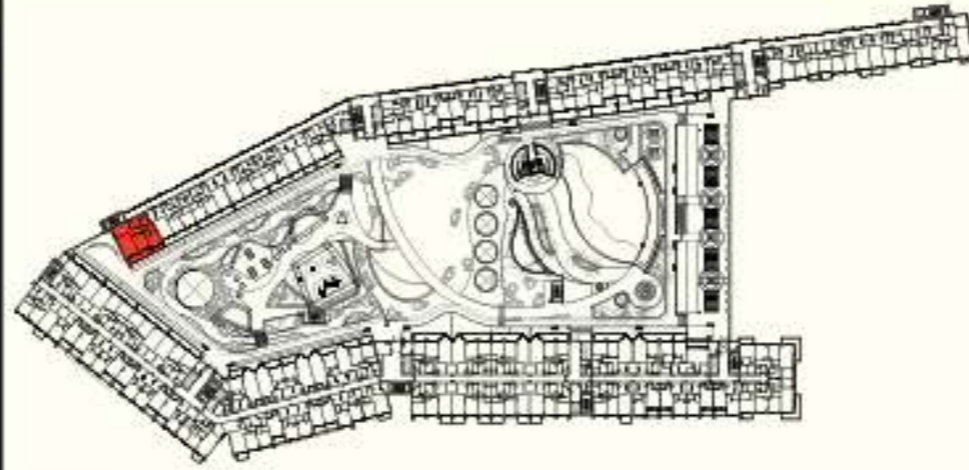


NINTH FLOOR  
FLAT NO. : 913



FLAT TYPE	= 2 BEDROOM - TYPE G (R2-G)
NO. OF UNITS	= 8
FLAT AREA (W/O BALCONY)	= 119.41 SQ.M. / 1,285.00 SQ.FT.
BALCONY AREA	= 8.22 SQ.M. / 89.00 SQ.FT.
TOTAL NET AREA =	= 127.63 SQ.M. / 1,374.00 SQ.FT.

## غرفتين وصالة - نموذج H (R2 - H)

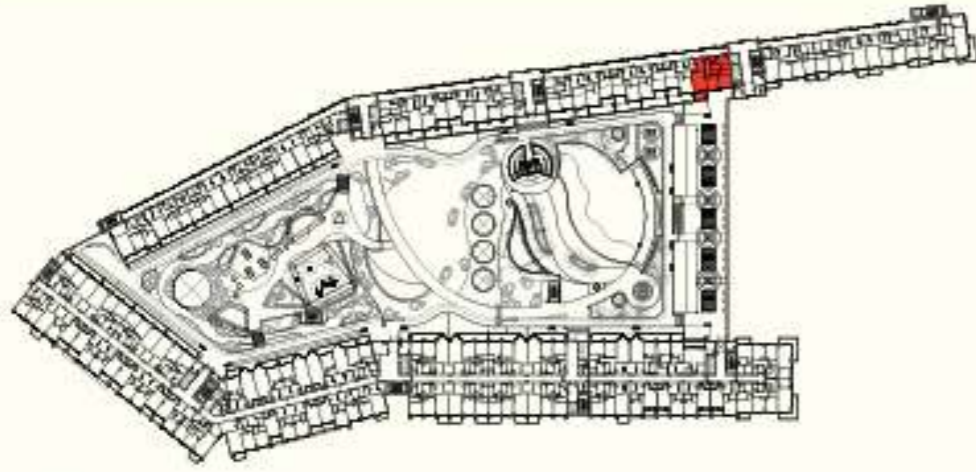


FIRST FLOOR  
FLAT NO. :120

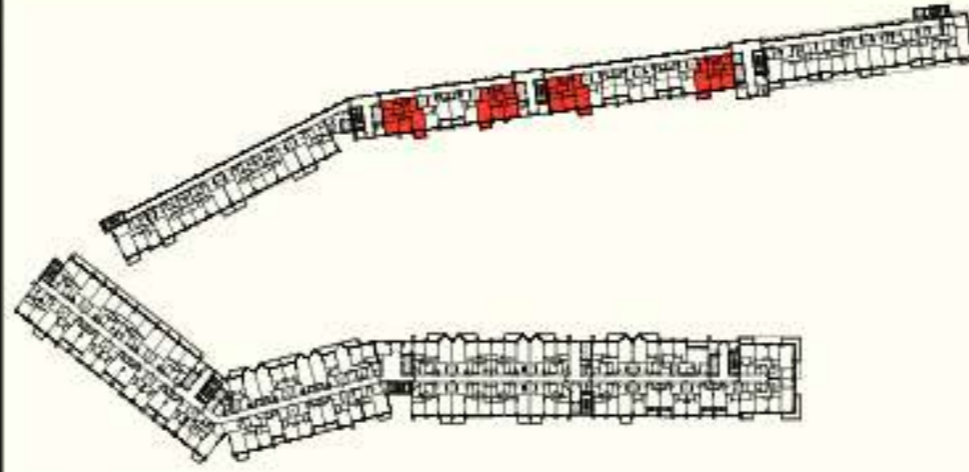


FLAT TYPE	- 2 BEDROOM - TYPE H (R2-H)
NO. OF UNITS	- 1
FLAT AREA (W/O BALCONY)	- 119.41 SQ.M. / 1,285.00 SQ.FT.
BALCONY AREA	- 21.33 SQ.M. / 230.00 SQ.FT.
TOTAL NET AREA	- 140.74 SQ.M. / 1,515.00 SQ.FT.

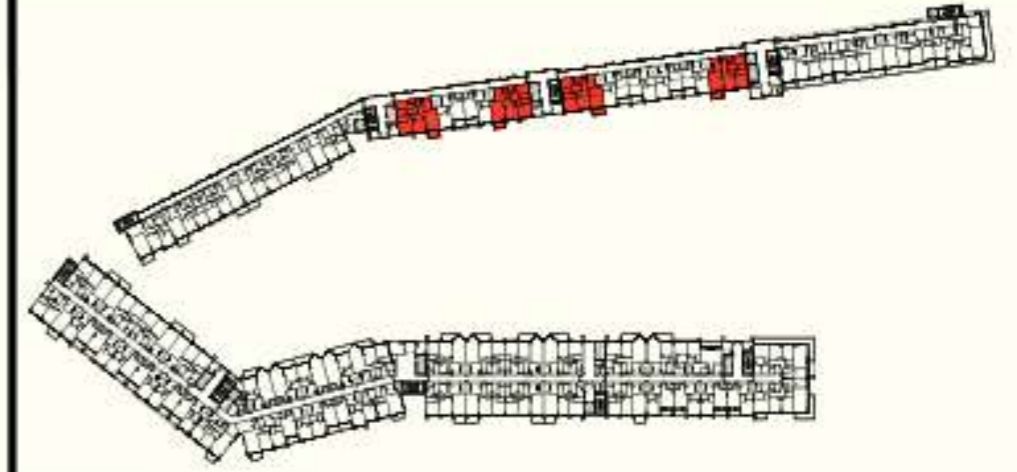
## غرفتين وصالة - نموذج 1 (R2 - I)



FIRST FLOOR  
FLAT NO. :105



TYPICAL 2ND TO 3RD & 5TH TO 8TH FLOOR  
FLATS NO. : 205, 210, 211, 214, 305, 310, 311, 314, 505, 510, 511, 514, 605, 610, 611, 614, 705, 710, 711, 714, 805, 810, 811, 814

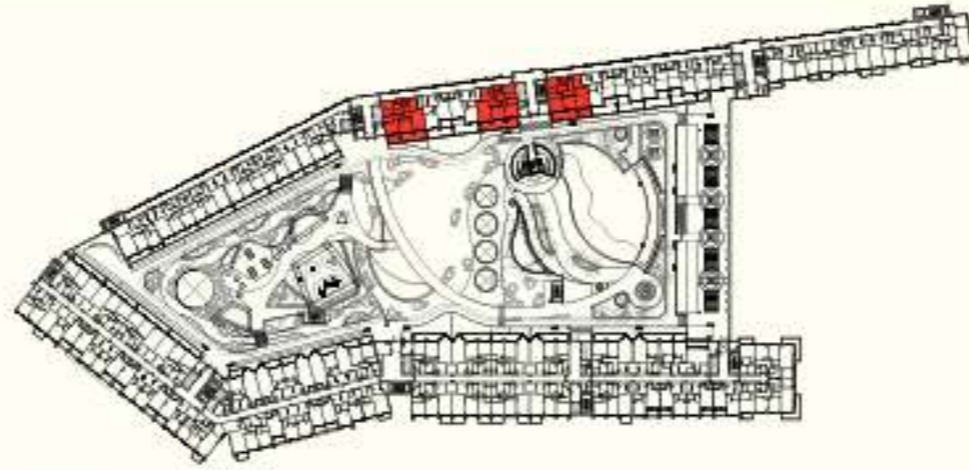


FOURTH FLOOR  
FLATS NO. :405, 410, 411, 414



FLAT TYPE	= 2 BEDROOM - TYPE I (R2-I)
NO. OF UNITS	= 29
FLAT AREA (W/O BALCONY)	= FROM 108.00 SQ.M. / 1,163.00 SQ.FT. TO 113.00 SQ.M. / 1,218.00 SQ.FT.
BALCONY AREA	= FROM 7.30 SQ.M. / 79.00 SQ.FT. TO 7.80 SQ.M. / 82.00 SQ.FT.
TOTAL NET AREA =	= FROM 118.00 SQ.M. / 1,249.00 SQ.FT. TO 121.00 SQ.M. / 1,302.00 SQ.FT.

## غرفتين وصالة - نموذج J (R2 - J)

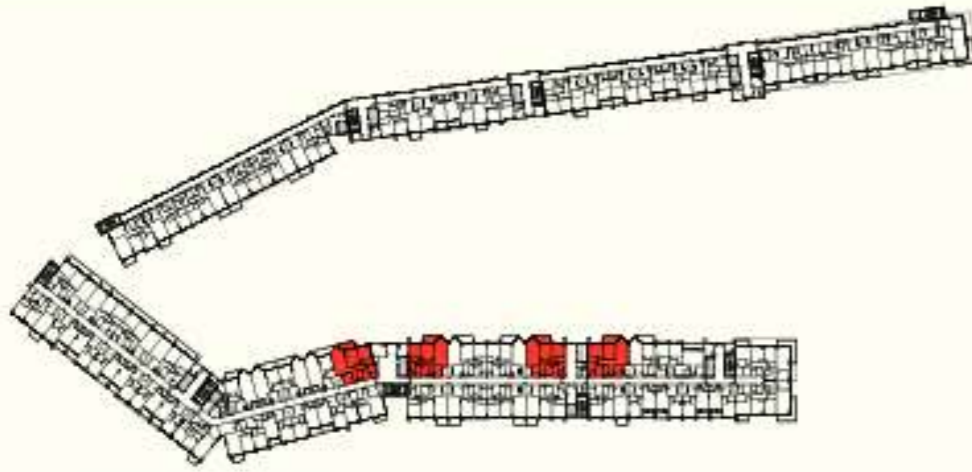


FIRST FLOOR  
FLATS NO. :110, 111, 114

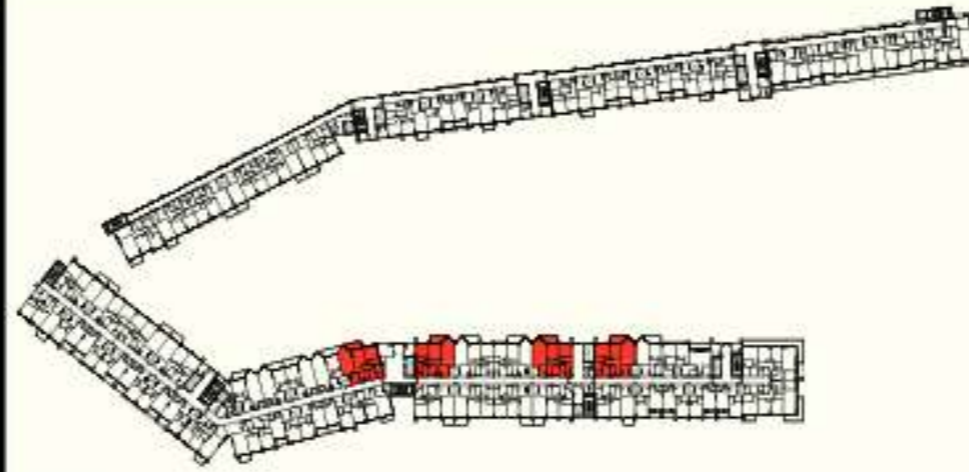


FLAT TYPE	= 2 BEDROOM - TYPE J (R2-J)
NO. OF UNITS	= 3
FLAT AREA (W/O BALCONY)	= FROM 112.00 SQ.M. / 1,208.00 SQ.FT. TO 113.00 SQ.M. / 1,218.00 SQ.FT.
BALCONY AREA	= FROM 31.00 SQ.M. / 334.00 SQ.FT. TO 33.00 SQ.M. / 355.00 SQ.FT.
TOTAL NET AREA =	= FROM 144.00 SQ.M. / 1,550.00 SQ.FT. TO 145.00 SQ.M. / 1,581.00 SQ.FT.

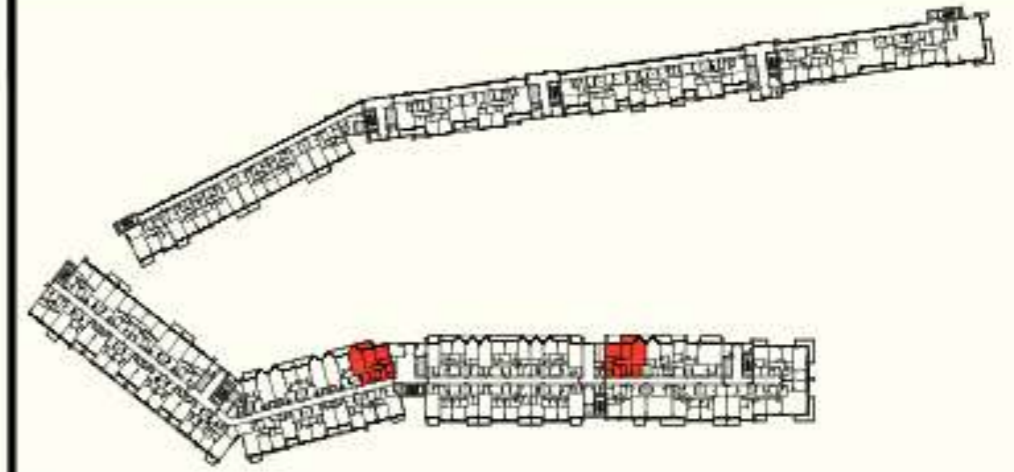
## غرفتين وصالة - نموذج K (R2 - K)



TYPICAL 2ND TO 3RD & 5TH TO 6TH FLOOR  
FLATS NO. : 237, 243, 246, 251, 337, 343, 346, 351, 537, 543, 546, 551, 637, 643, 646, 651, 737, 743, 746, 751, 837, 843, 846, 851



FOURTH FLOOR  
FLATS NO. : 437, 443, 446, 451

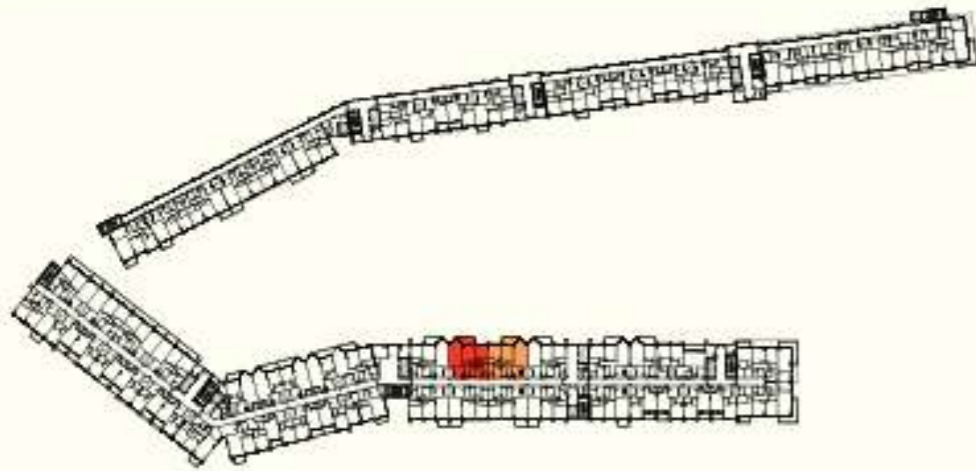


NINTH FLOOR  
FLATS NO. : 930, 942

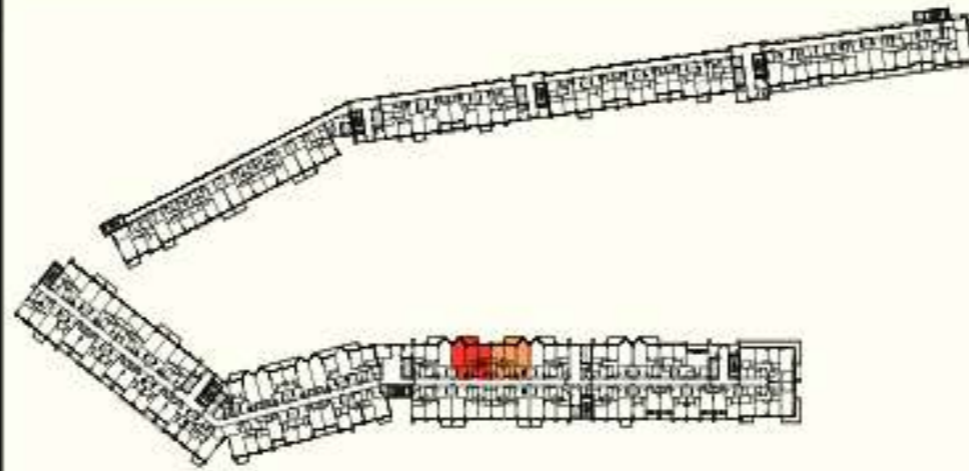


FLAT TYPE	= 2 BEDROOM - TYPE K (R2-K)
NO. OF UNITS	= 30
FLAT AREA (W/O BALCONY)	= FROM 112.00 SQ.M. / 1,208.00 SQ.FT. TO 116.00 SQ.M. / 1,249.00 SQ.FT.
BALCONY AREA	= FROM 8.00 SQ.M. / 86.00 SQ.FT. TO 9.00 SQ.M. / 97.00 SQ.FT.
TOTAL NET AREA =	= FROM 121.00 SQ.M. / 1,302.00 SQ.FT. TO 125.00 SQ.M. / 1,348.00 SQ.FT.

## غرفتين وصالة - نموذج L (R2 - L)



TYPICAL 2ND TO 3RD & 5TH TO 8TH FLOOR  
FLATS NO. : 244, 245, 344, 345, 544, 545, 644, 645, 744, 745, 844, 845,

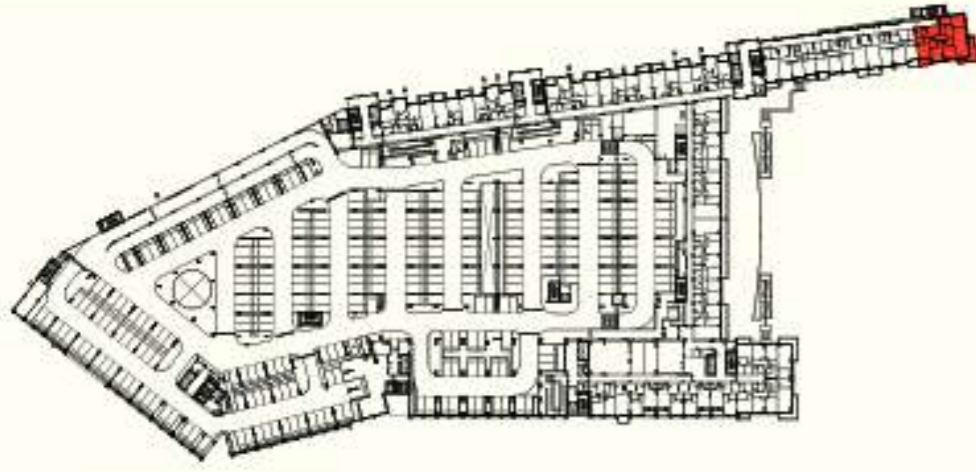


FOURTH FLOOR  
FLATS NO. : 444, 445

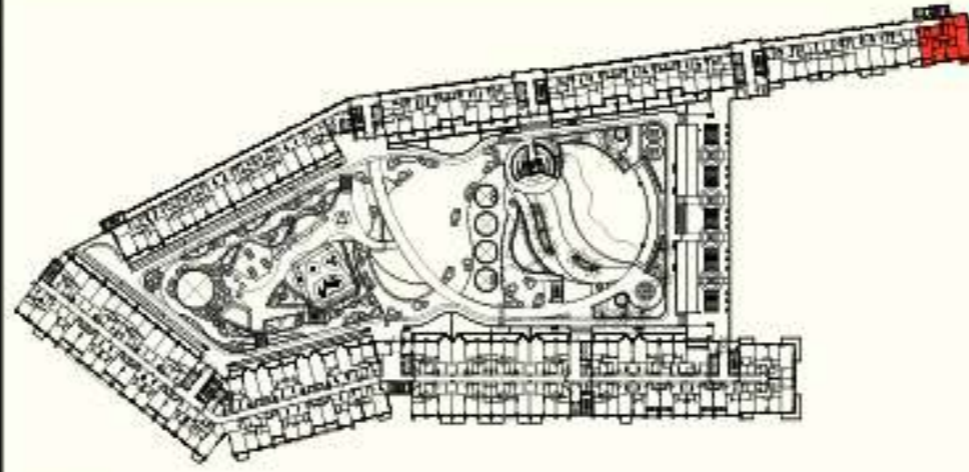


FLAT TYPE	= 2 BEDROOM - TYPE L (R2-L)
NO. OF UNITS	= 14
FLAT AREA (W/O BALCONY)	= 111.20 SQ.M. / 1,197.00 SQ.FT.
BALCONY AREA	= 8.70 SQ.M. / 94.00 SQ.FT.
TOTAL NET AREA =	= 119.90 SQ.M. / 1,291.00 SQ.FT.

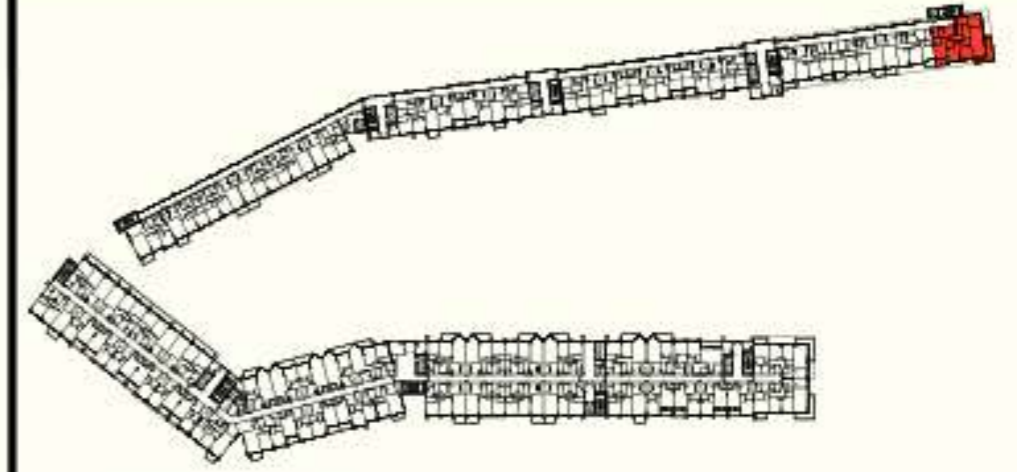
## ثلاث غرف وصالة - نموذج A (R3 - A)



FIRST & SECOND PODIUM FLOOR  
FLATS NO. : P101 & P201



FIRST FLOOR  
FLAT NO. : 101

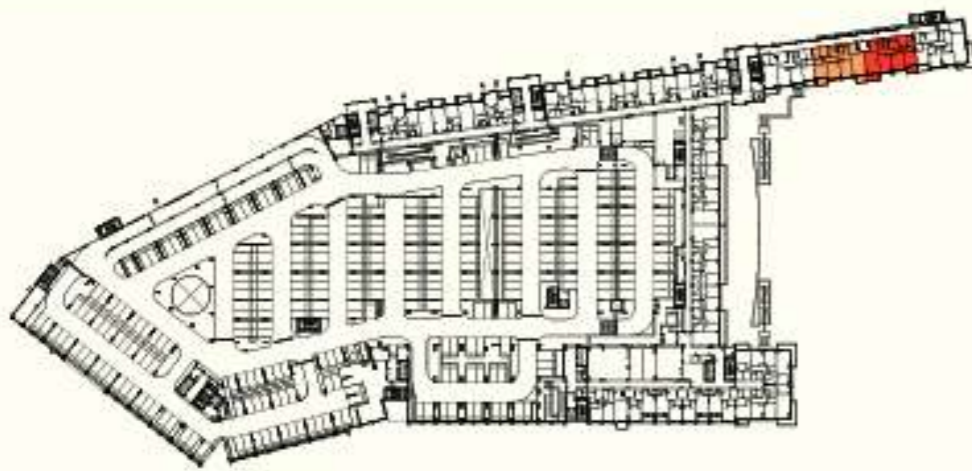


TYPICAL 2ND TO 3RD & 5TH TO 6TH FLOOR  
FLATS NO. : 201, 301, 501, 601, 701, 801

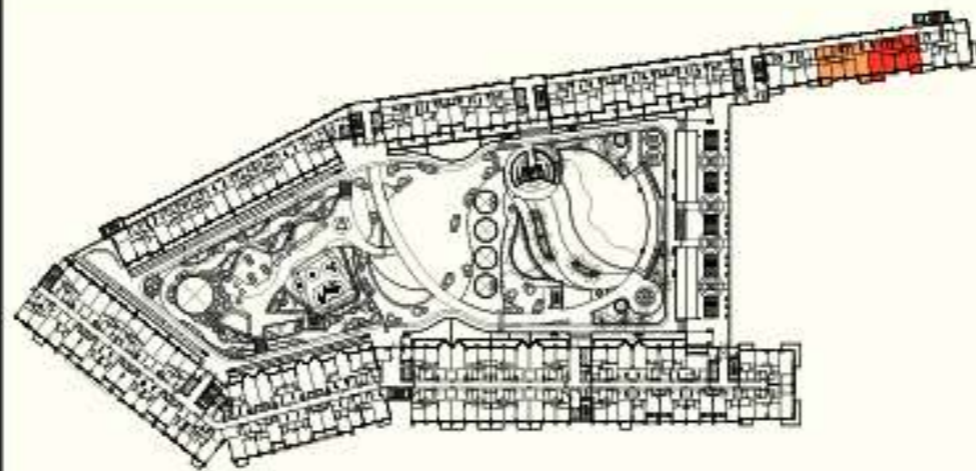


FLAT TYPE	= 3 BEDROOM - TYPE A (R3-A)
NO. OF UNITS	= 9
FLAT AREA (W/O BALCONY)	= 172.00 SQ.M. / 1,851.00 SQ.FT.
BALCONY AREA	= 26.97 SQ.M. / 290.00 SQ.FT.
TOTAL NET AREA =	= 198.97 SQ.M. / 2,141.00 SQ.FT.

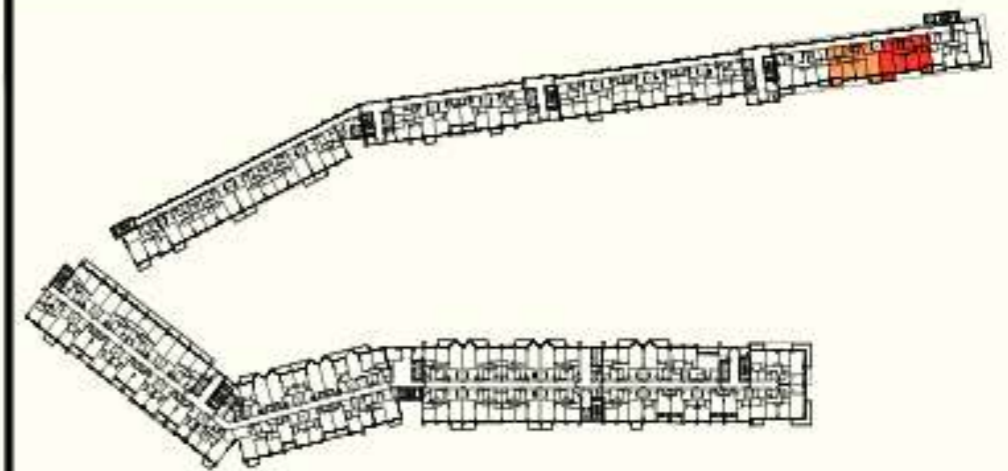
## ثلاث غرف وصالة - نموذج B (R3 - B)



FIRST & SECOND PODIUM FLOOR  
FLATS NO. : P102, P103, P202, P203



FIRST FLOOR  
FLATS NO. : 102, 103

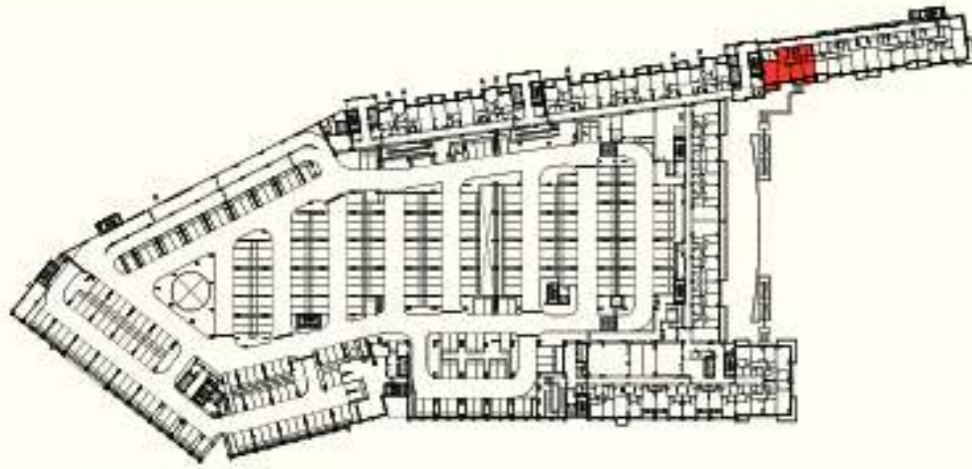


TYPICAL 2ND TO 3RD & 5TH TO 8TH FLOOR  
FLATS NO. : 202, 203, 302, 303, 502, 503, 602, 603, 702, 703, 802, 803

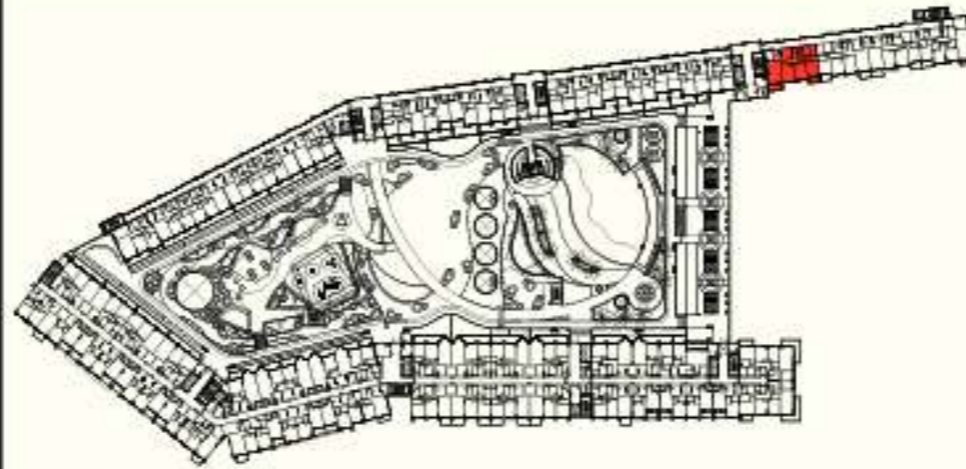


FLAT TYPE	= 3 BEDROOM - TYPE B (R3-B)
NO. OF UNITS	= 18
FLAT AREA (W/O BALCONY)	= FROM 140.50 SQ.M. / 1,512.00 SQ.FT.
BALCONY AREA	= FROM 14.20 SQ.M. / 153.00 SQ.FT.
TOTAL NET AREA =	= FROM 154.70 SQ.M. / 1,665.00 SQ.FT.

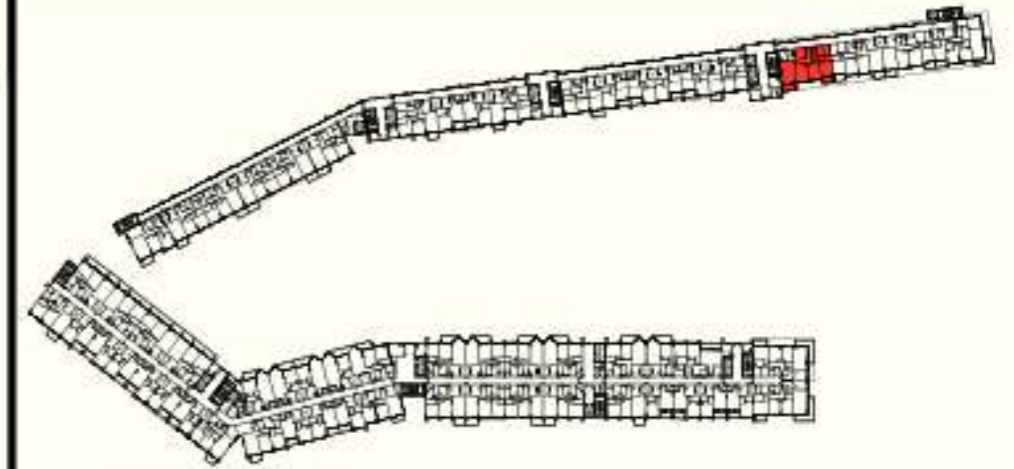
## ثلاث غرف وصالة - نموذج C (R3 - C)



FIRST & SECOND PODIUM FLOOR  
FLATS NO. : P104 & P204



FIRST FLOOR  
FLAT NO. : 104

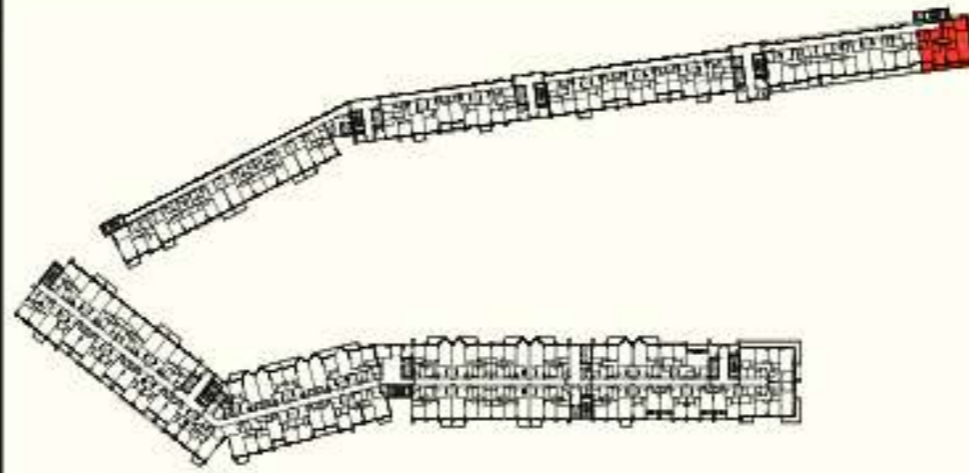


TYPICAL 2ND TO 3RD & 5TH TO 8TH FLOOR  
FLATS NO. : 204, 304, 504, 604, 704, 804



FLAT TYPE	= 3 BEDROOM - TYPE C (R3-C)
NO. OF UNITS	= 9
FLAT AREA (W/O BALCONY)	= 138.59 SQ.M. / 1,470.00 SQ.FT.
BALCONY AREA	= 15.45 SQ.M. / 166.00 SQ.FT.
TOTAL NET AREA =	= 152.04 SQ.M. / 1,637.00 SQ.FT.

## ثلاث غرف وصالة - نموذج D (R3 - D)

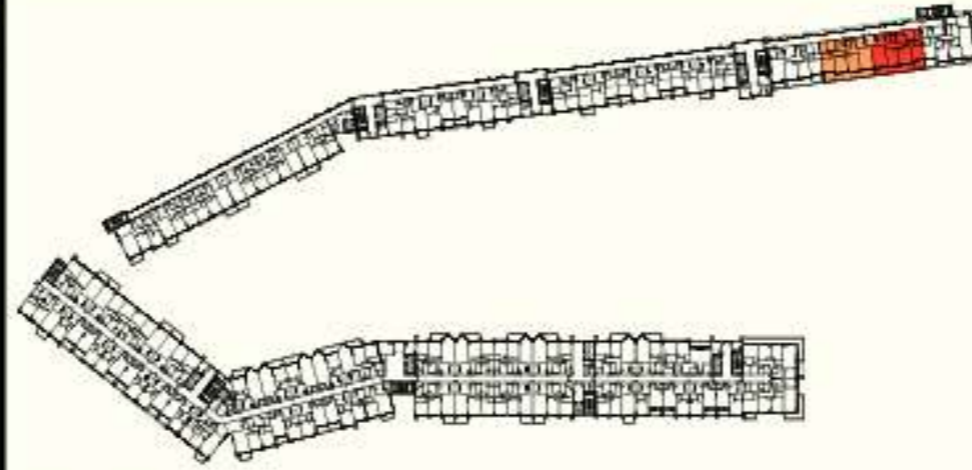


FOURTH FLOOR  
FLAT NO. : 401



FLAT TYPE	= 3 BEDROOM - TYPE D (R3-D)
NO. OF UNITS	= 1
FLAT AREA (W/O BALCONY)	= 172.00 SQ.M. / 1,851.00 SQ.FT.
BALCONY AREA	= 53.93 SQ.M. / 581.00 SQ.FT.
TOTAL NET AREA =	= 225.93 SQ.M. / 2,432.00 SQ.FT.

## ثلاث غرف وصالة - نموذج E (R3 - E)

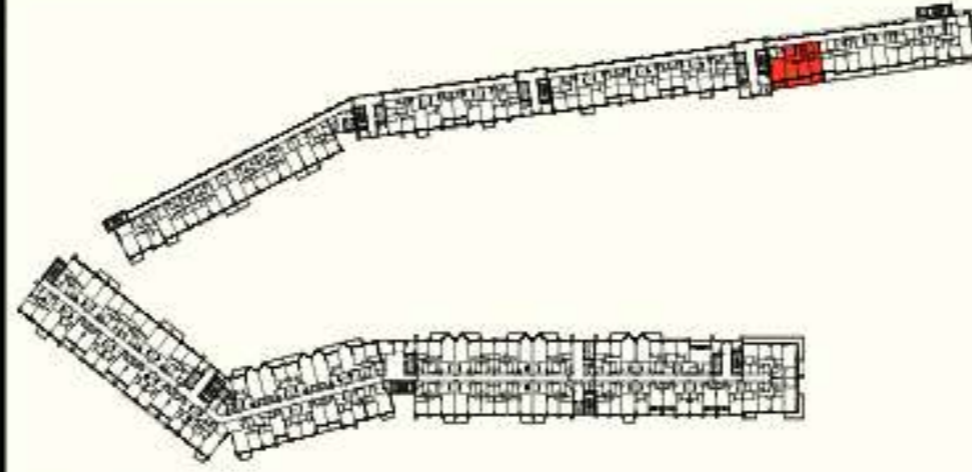


FOURTH FLOOR  
FLATS NO. : 402, 403



FLAT TYPE	= 3 BEDROOM - TYPE E (R3-E)
NO. OF UNITS	= 2
FLAT AREA (W/O BALCONY)	= FROM 140.50 SQ.M. / 1,512.00 SQ.FT.
BALCONY AREA	= 32.50 SQ.M. / 350.00 SQ.FT.
TOTAL NET AREA =	= FROM 173.00 SQ.M. / 1,862.00 SQ.FT.

## ثلاث غرف وصالة - نموذج F (R3 - F)

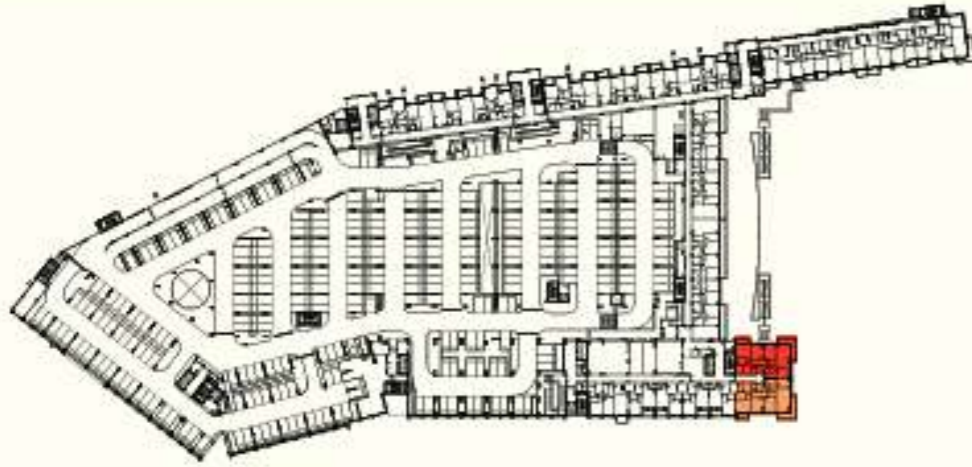


FOURTH FLOOR  
FLAT NO. : 404

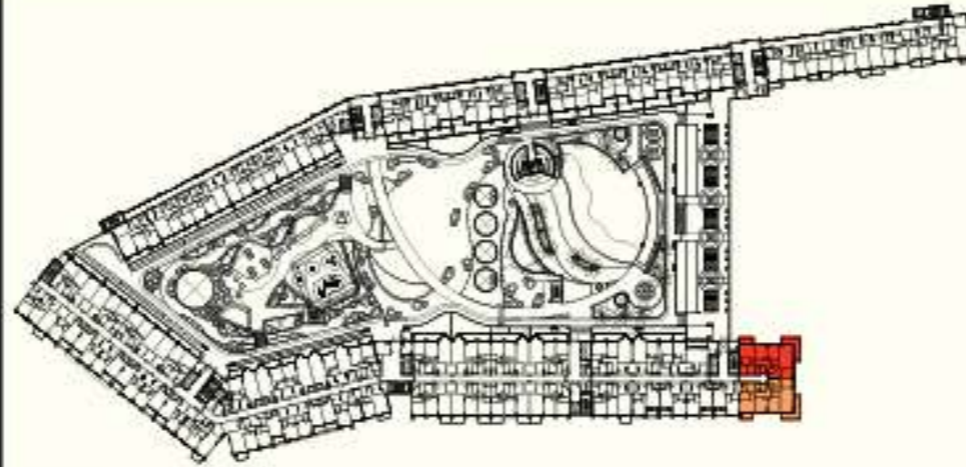


FLAT TYPE	= 3 BEDROOM - TYPE F (R3-F)
NO. OF UNITS	= 1
FLAT AREA (W/O BALCONY)	= 136.59 SQ.M. / 1,470.00 SQ.FT.
BALCONY AREA	= 33.51 SQ.M. / 361.00 SQ.FT.
TOTAL NET AREA =	= 170.10 SQ.M. / 1,831.00 SQ.FT.

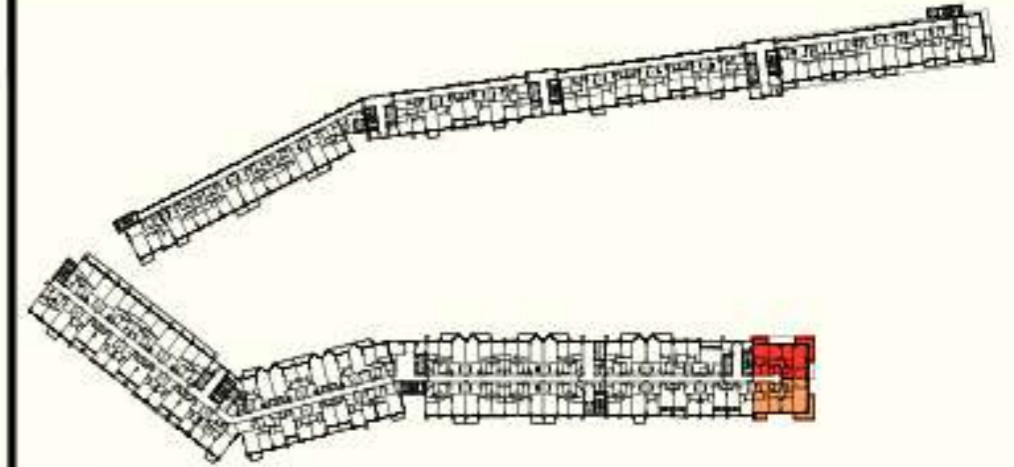
## ثلاث غرف وطالة - نموذج G (R3 - G)



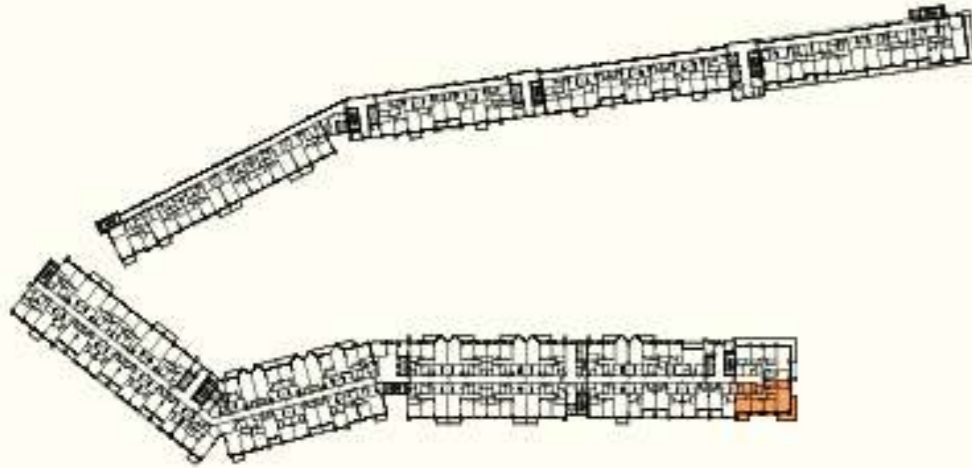
FIRST & SECOND PODIUM FLOOR  
FLATS NO. : P118, P119, P218, P219



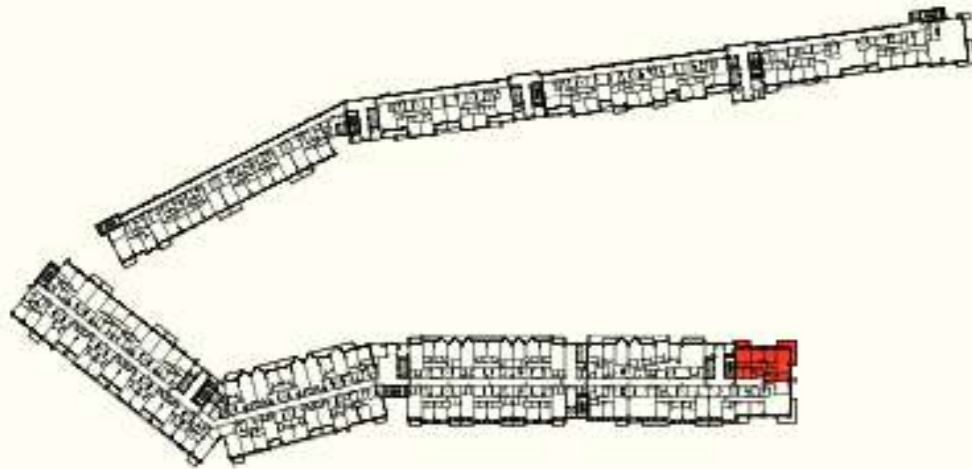
FIRST FLOOR  
FLATS NO. : 154, 160



TYPICAL 2ND TO 3RD & 5TH TO 8TH FLOOR  
FLATS NO. : 254, 260, 354, 360, 554, 560, 654, 660, 754, 760, 854, 860



FOURTH FLOOR  
FLAT NO. : 460

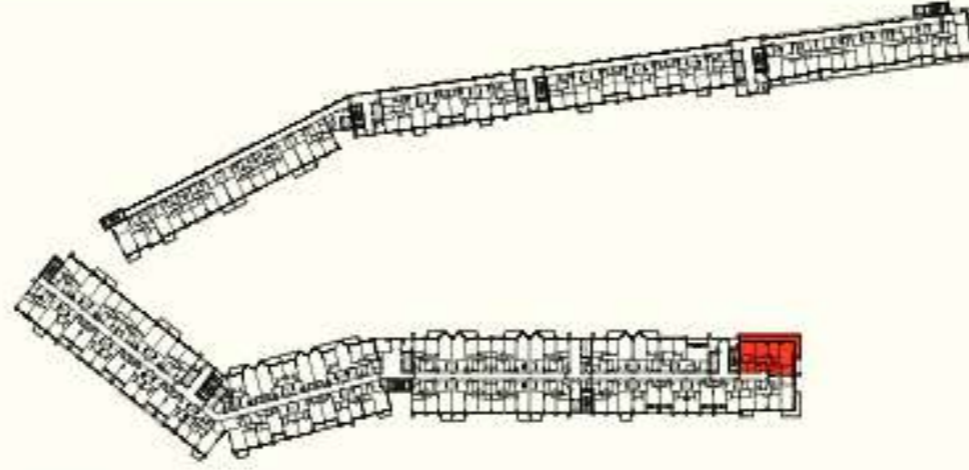


NINTH FLOOR  
FLAT NO. : 944



FLAT TYPE	= 3 BEDROOM - TYPE G (R3-G)
NO. OF UNITS	= 20
FLAT AREA (W/O BALCONY)	= FROM 148.00 SQ.M. / 1,572.00 SQ.FT. TO 150.00 SQ.M. / 1,615.00 SQ.FT.
BALCONY AREA	= FROM 30.00 SQ.M. / 323.00 SQ.FT. TO 31.00 SQ.M. / 334.00 SQ.FT.
TOTAL NET AREA =	= FROM 177.00 SQ.M. / 1,905.00 SQ.FT. TO 181.00 SQ.M. / 1,948.00 SQ.FT.

## ثلاث غرف وصالة - نموذج H (R3 - H)

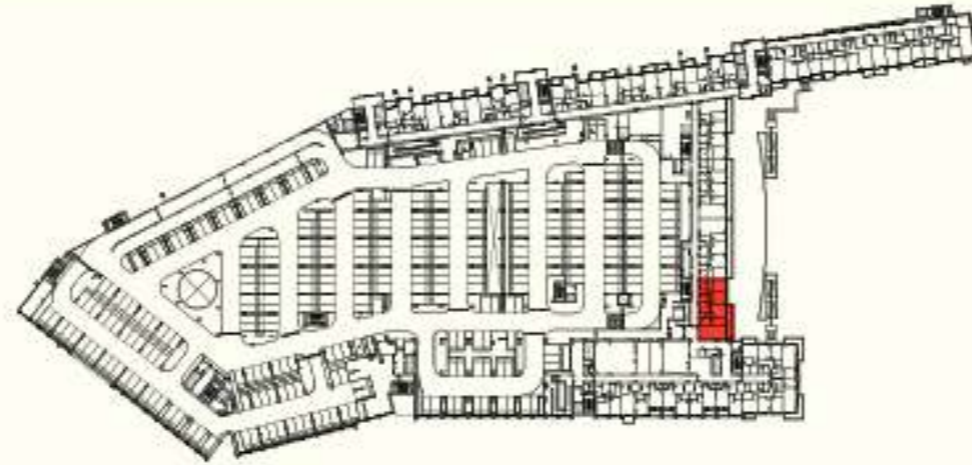


FOURTH FLOOR  
FLAT NO. : 454



FLAT TYPE	= 3 BEDROOM - TYPE H (R3-H)
NO. OF UNITS	= 1
FLAT AREA (W/O BALCONY)	= 149.93 SQ.M. / 1,614.00 SQ.FT.
BALCONY AREA	= 46.65 SQ.M. / 502.00 SQ.FT.
TOTAL NET AREA =	= 196.58 SQ.M. / 2,116.00 SQ.FT.

## ثلاث غرف وصالة - نموذج 1 (R3 - I)

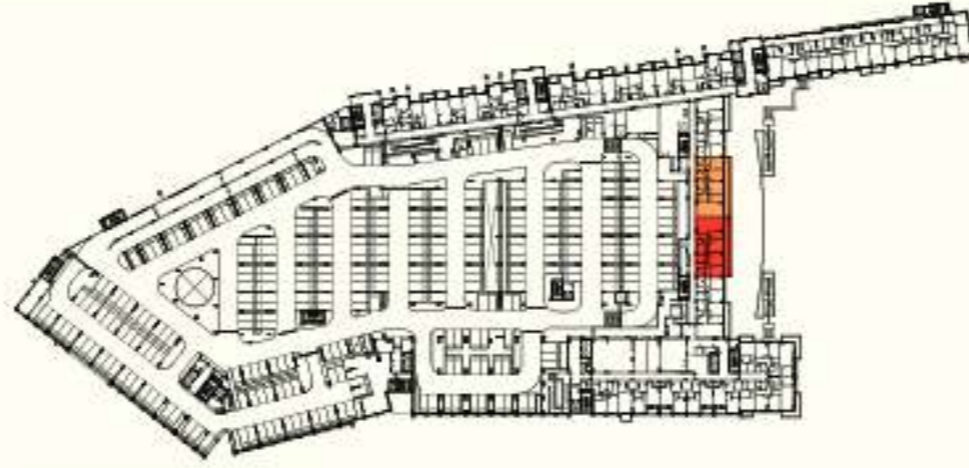


FIRST & SECOND PODIUM FLOOR  
FLATS NO. : P120, P220



FLAT TYPE	= 3 BEDROOM - TYPE I (R3-I)
NO. OF UNITS	= 2
FLAT AREA (W/O BALCONY)	= 144.18 SQ.M. / 1,552.00 SQ.FT.
BALCONY AREA	= 21.08 SQ.M. / 227.00 SQ.FT.
TOTAL NET AREA =	= 165.27 SQ.M. / 1779.00 SQ.FT.

## ثلاث غرف وصالة - نموذج J (R3 - J)

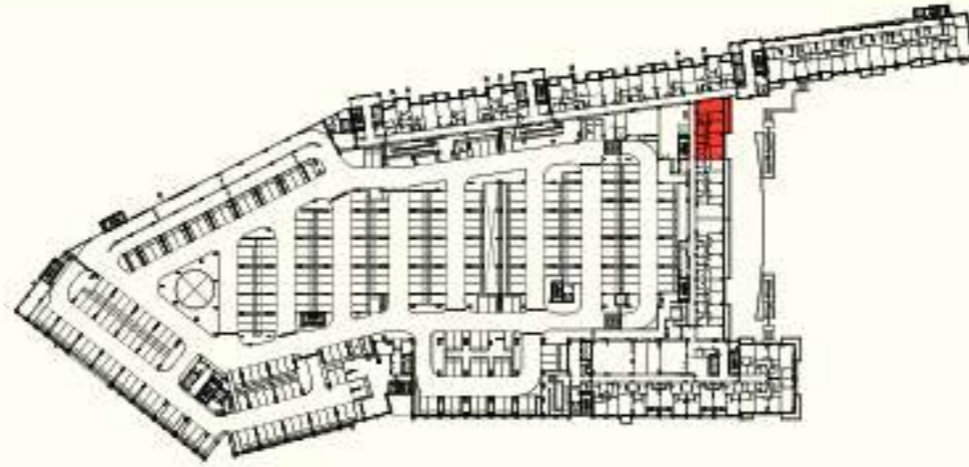


FIRST & SECOND PODIUM FLOOR  
FLATS NO. : P121, P122, P221, P222



FLAT TYPE	= 3 BEDROOM - TYPE J (R3-J)
NO. OF UNITS	= 4
FLAT AREA (W/O BALCONY)	= 143.36 SQ.M. / 1,543.00 SQ.FT.
BALCONY AREA	= 35.40 SQ.M. / 381.00 SQ.FT.
TOTAL NET AREA =	= 178.76 SQ.M. / 1,924.00 SQ.FT.

## ثلاث غرف وصالة - نموذج K (R3 - K)

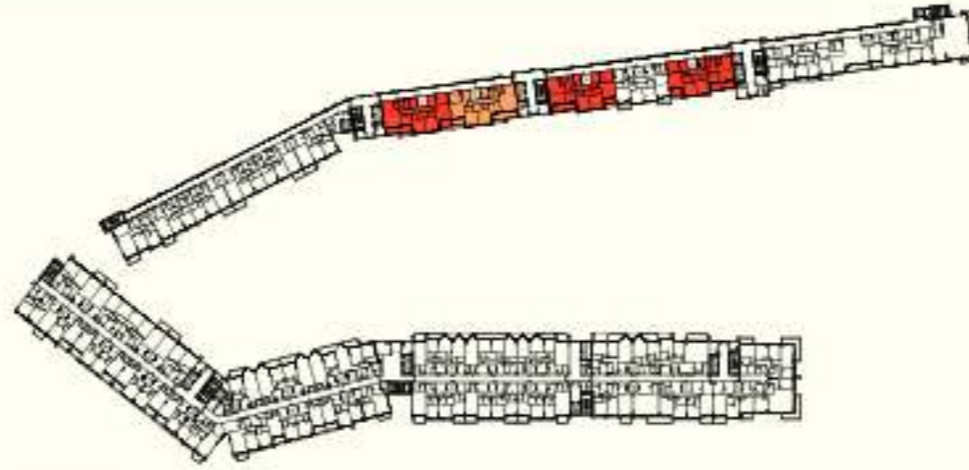


FIRST & SECOND PODIUM FLOOR  
FLATS NO. : P123, P223



FLAT TYPE	= 3 BEDROOM - TYPE K (R3-K)
NO. OF UNITS	= 2
FLAT AREA (W/O BALCONY)	= 138.91 SQ.M. / 1,495.00 SQ.FT.
BALCONY AREA	= 21.21 SQ.M. / 228.00 SQ.FT.
TOTAL NET AREA =	= 160.12 SQ.M. / 1,724.00 SQ.FT.

## ثلاث غرف وطالة - نموذج L (R3 - L)



NINTH FLOOR  
FLATS NO. : 903, 905, 906, 907



FLAT TYPE	= 3 BEDROOM - TYPE L (R3-L)
NO. OF UNITS	= 4
FLAT AREA (W/O BALCONY)	= FROM 188.00 SQ.M. / 1,808.00 SQ.FT. TO 172.00 SQ.M. / 1,851.00 SQ.FT.
BALCONY AREA	= FROM 20.00 SQ.M. / 215.00 SQ.FT. TO 23.00 SQ.M. / 248.00 SQ.FT.
TOTAL NET AREA =	= FROM 190.00 SQ.M. / 2,045.00 SQ.FT. TO 194.00 SQ.M. / 2,088.00 SQ.FT.

نماذج

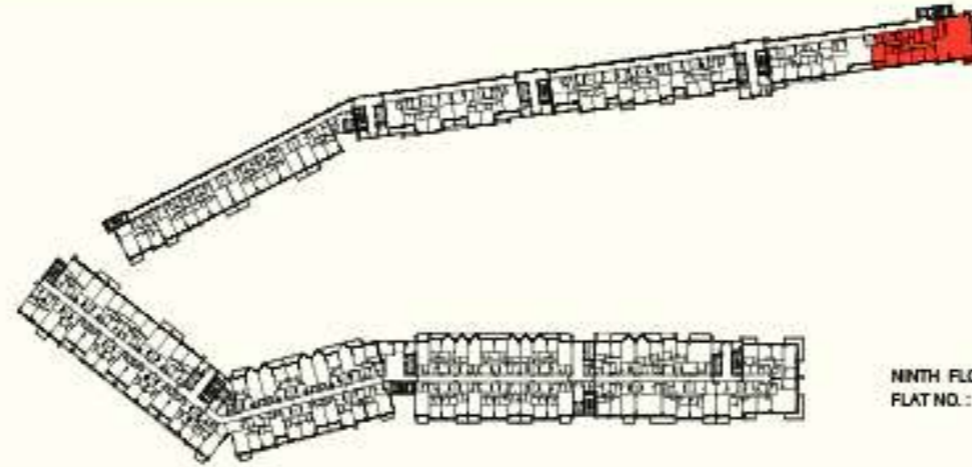
من الشقق المكوّنة من

أربع غرف نوم

وصالة

**بنتهاوس**

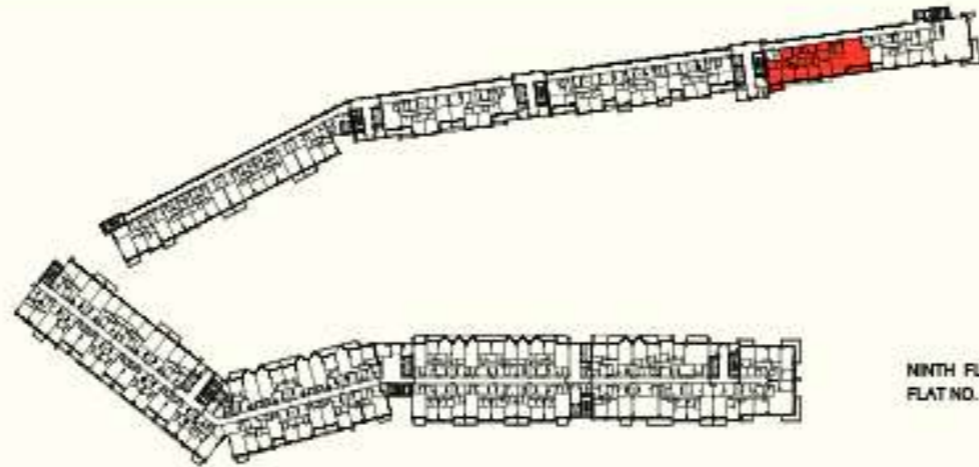
## أربع غرف وصالة - نموذج A (R4 - A)



FLAT TYPE	= 4 BEDROOM - TYPE A (R4-A)
NO. OF UNITS	= 1
FLAT AREA (W/O BALCONY)	= 318.82 SQ.M. / 3,410.00 SQ.FT.
BALCONY AREA	= 28.99 SQ.M. / 291.00 SQ.FT.
TOTAL NET AREA =	= 343.81 SQ.M. / 3,701.00 SQ.FT.

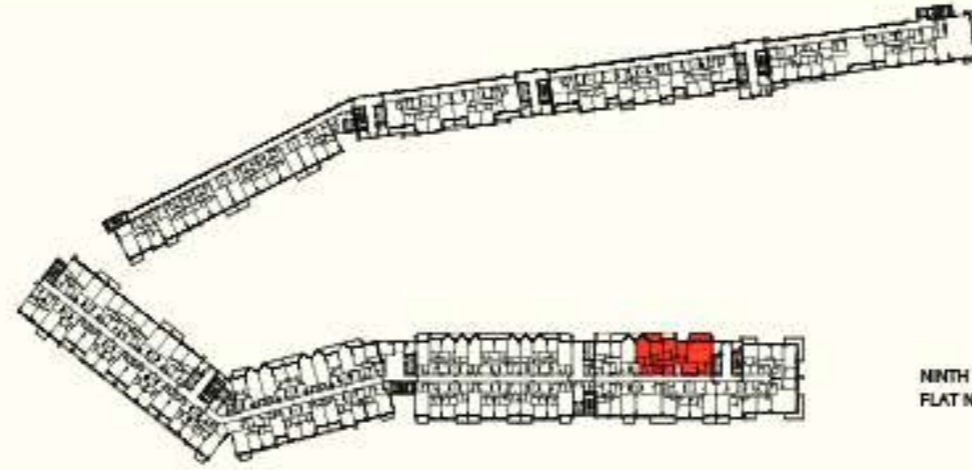


## أربع غرف وصالة - نموذج B (R4 - B)



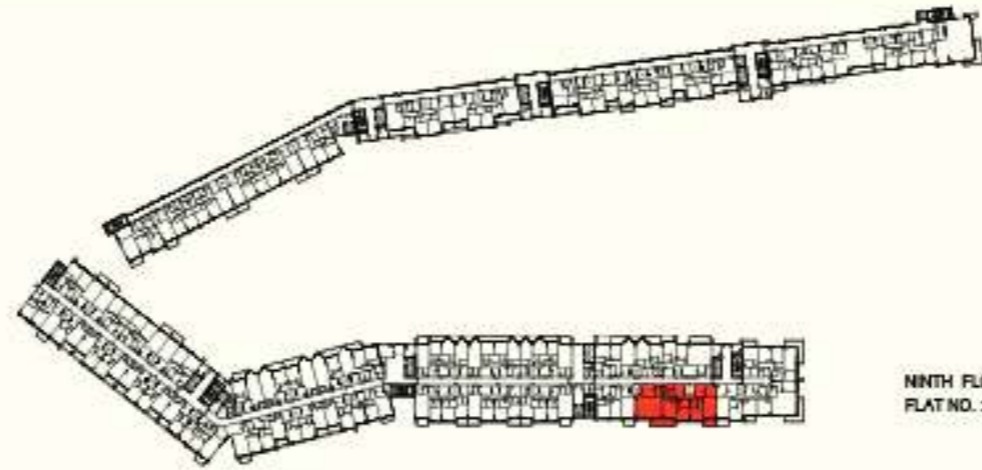
FLAT TYPE	= 4 BEDROOM - TYPE B (R4-B)
NO. OF UNITS	= 1
FLAT AREA (W/O BALCONY)	= 288.82 SQ.M. / 2,891.00 SQ.FT.
BALCONY AREA	= 22.54 SQ.M. / 243.00 SQ.FT.
TOTAL NET AREA =	= 291.16 SQ.M. / 3,134.00 SQ.FT.

## أربع غرف وصالة - نموذج C (R4 - C)



FLAT TYPE	= 4 BEDROOM - TYPE C (R4-C)
NO. OF UNITS	= 1
FLAT AREA (W/O BALCONY)	= 218.22 SQ.M. / 2,349.00 SQ.FT.
BALCONY AREA	= 22.29 SQ.M. / 240.00 SQ.FT.
TOTAL NET AREA =	= 240.51 SQ.M. / 2,589.00 SQ.FT.

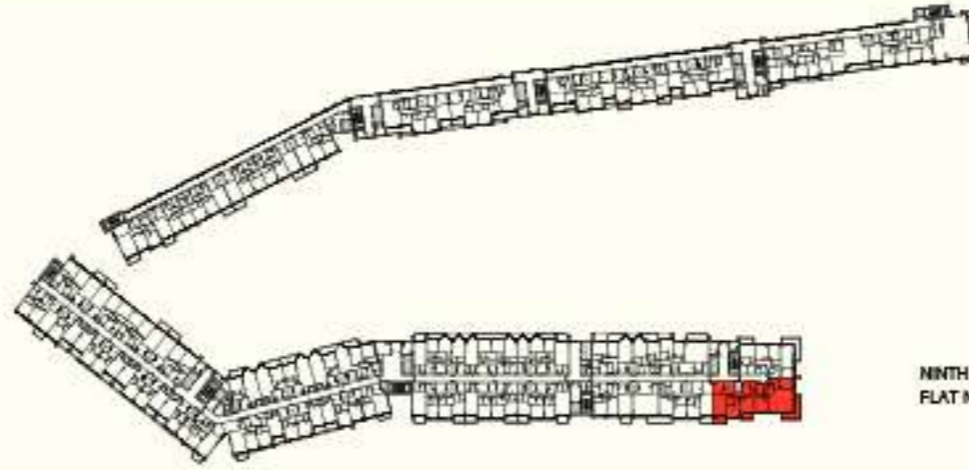
## أربع غرف وصالة - نموذج D (R4 - D)



FLAT TYPE	= 4 BEDROOM - TYPE D (R4-D)
NO. OF UNITS	= 1
FLAT AREA (W/O BALCONY)	= 225.23 SQ.M. / 2,424.00 SQ.FT.
BALCONY AREA	= 22.88 SQ.M. / 244.00 SQ.FT.
TOTAL NET AREA =	= 247.91 SQ.M. / 2,669.00 SQ.FT.



## أربع غرف وصالة - نموذج E (R4 - E)



FLAT TYPE	= 4 BEDROOM - TYPE E (R4-E)
NO. OF UNITS	= 1
FLAT AREA (W/O BALCONY)	= 223.38 SQ.M. / 2,404.00 SQ.FT.
BALCONY AREA	= 37.38 SQ.M. / 402.00 SQ.FT.
TOTAL NET AREA =	= 260.76 SQ.M. / 2,807.00 SQ.FT.

# تواصل معنا

+٩٧١ ٦٥٩ ٩٩٩ ٠٩

f Asas Developments

asasdevelopments

@ASASDevelopments

www.asasproperties.ae

ص. ب. رقم ٤ الشارقة، الإمارات العربية المتحدة