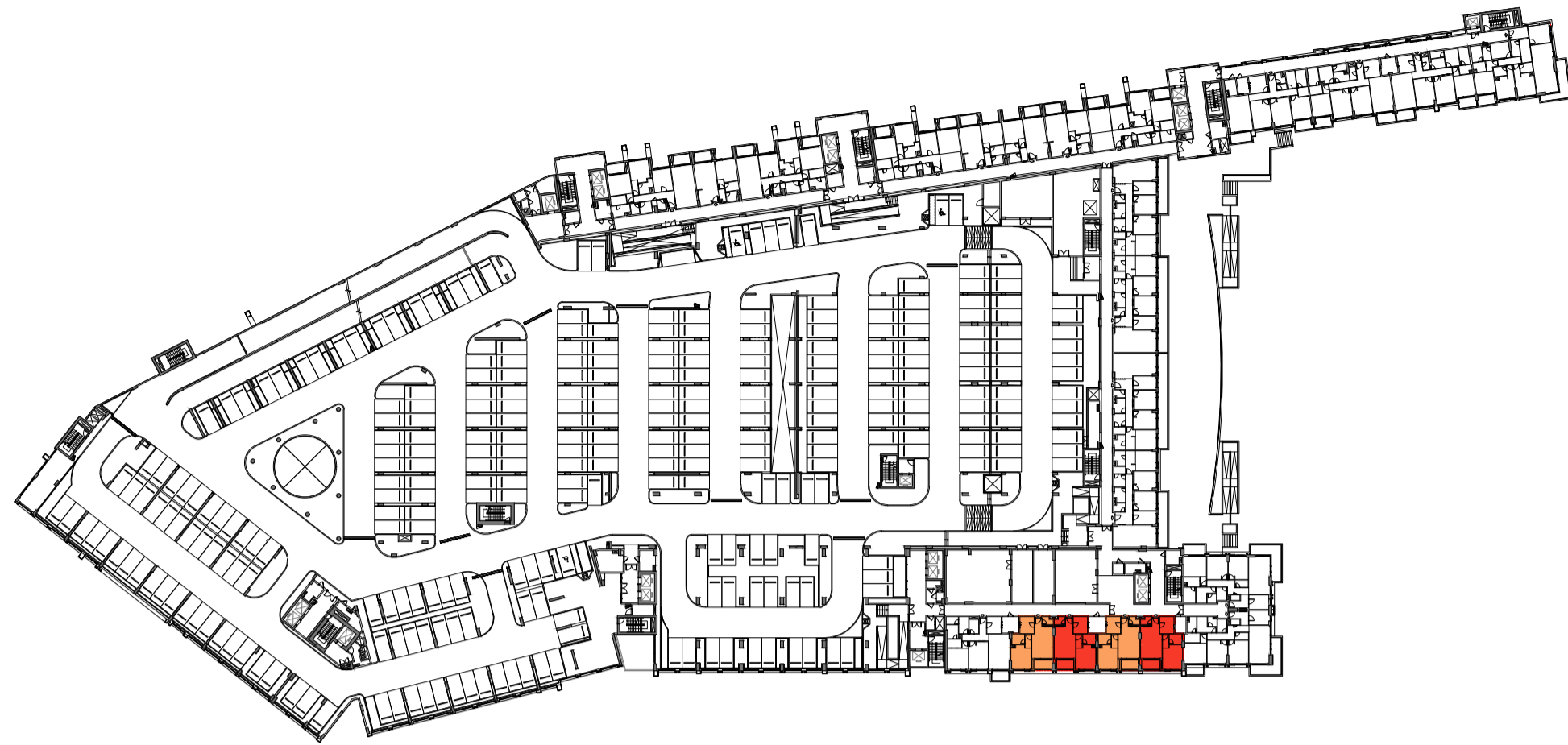
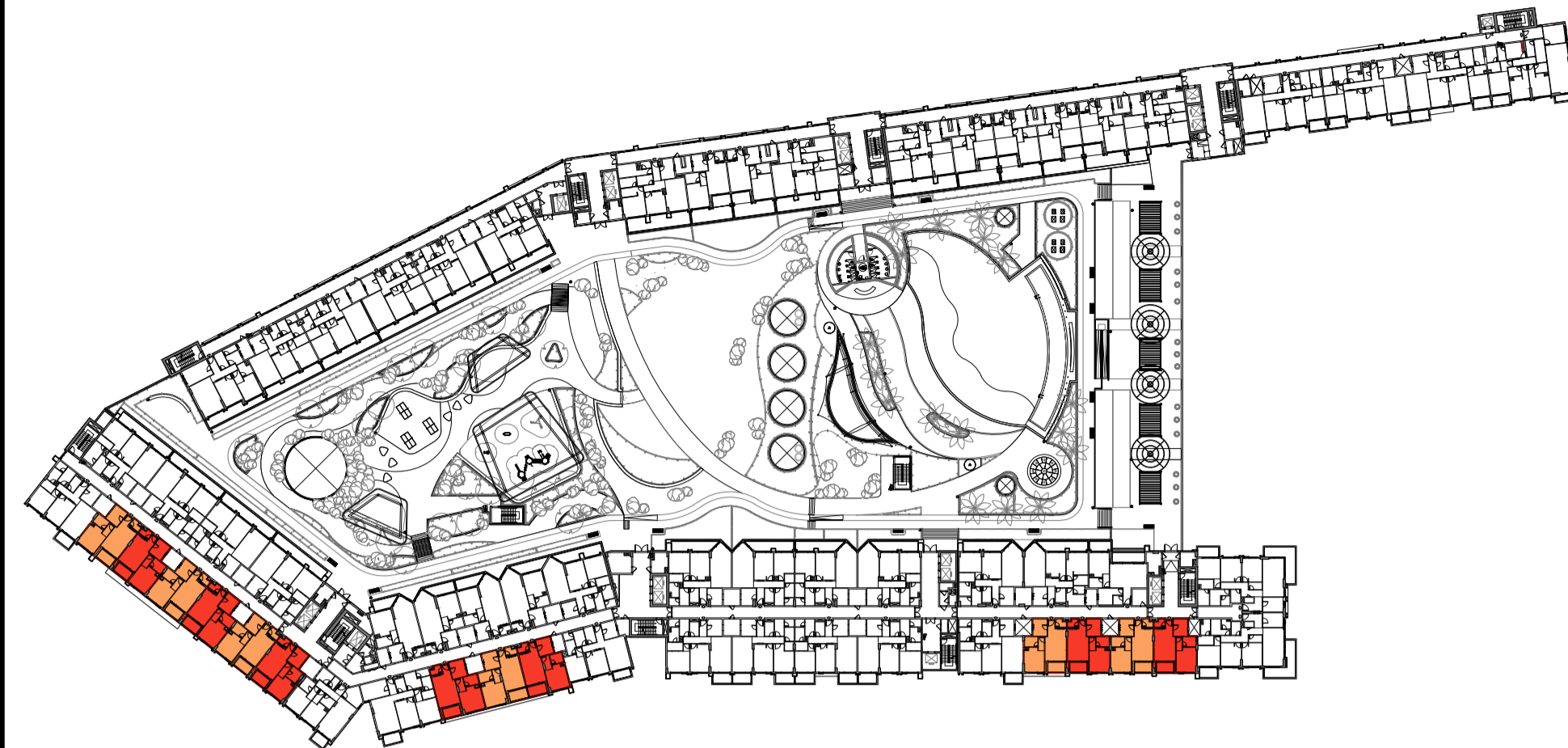


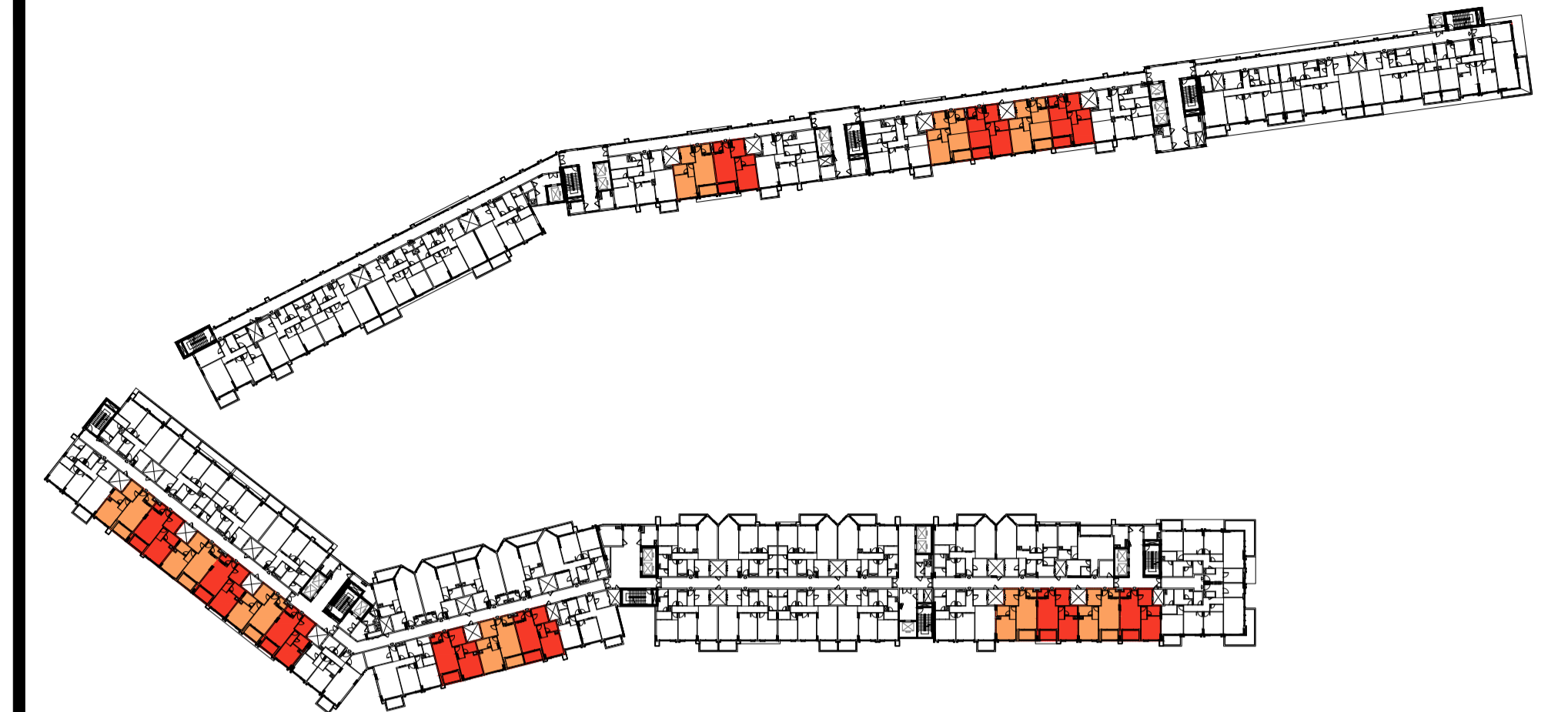
1 BEDROOM - TYPE A (R1-A)



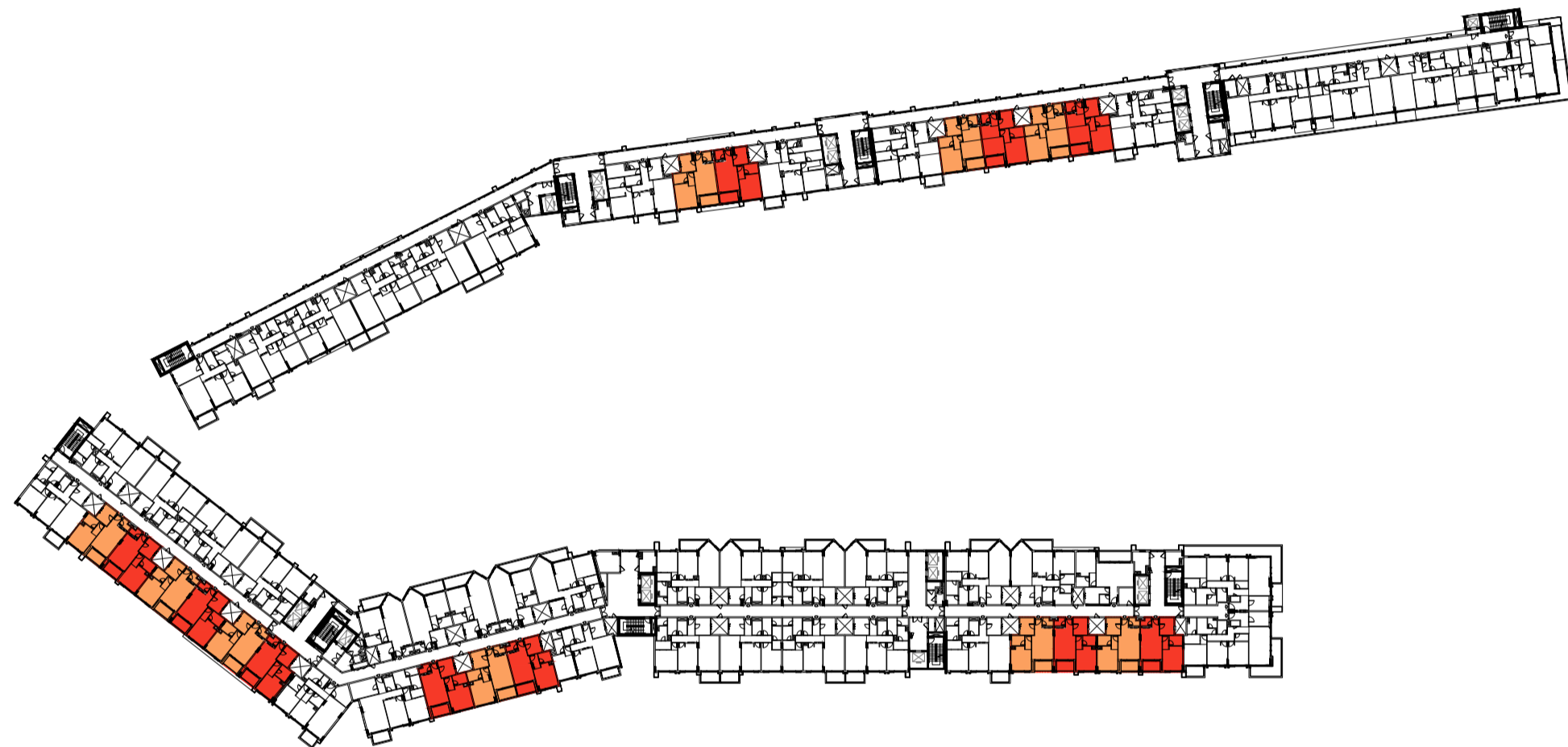
FIRST & SECOND PODIUM FLOOR
FLATS NO. : P114 TO P117, P214 TO P217



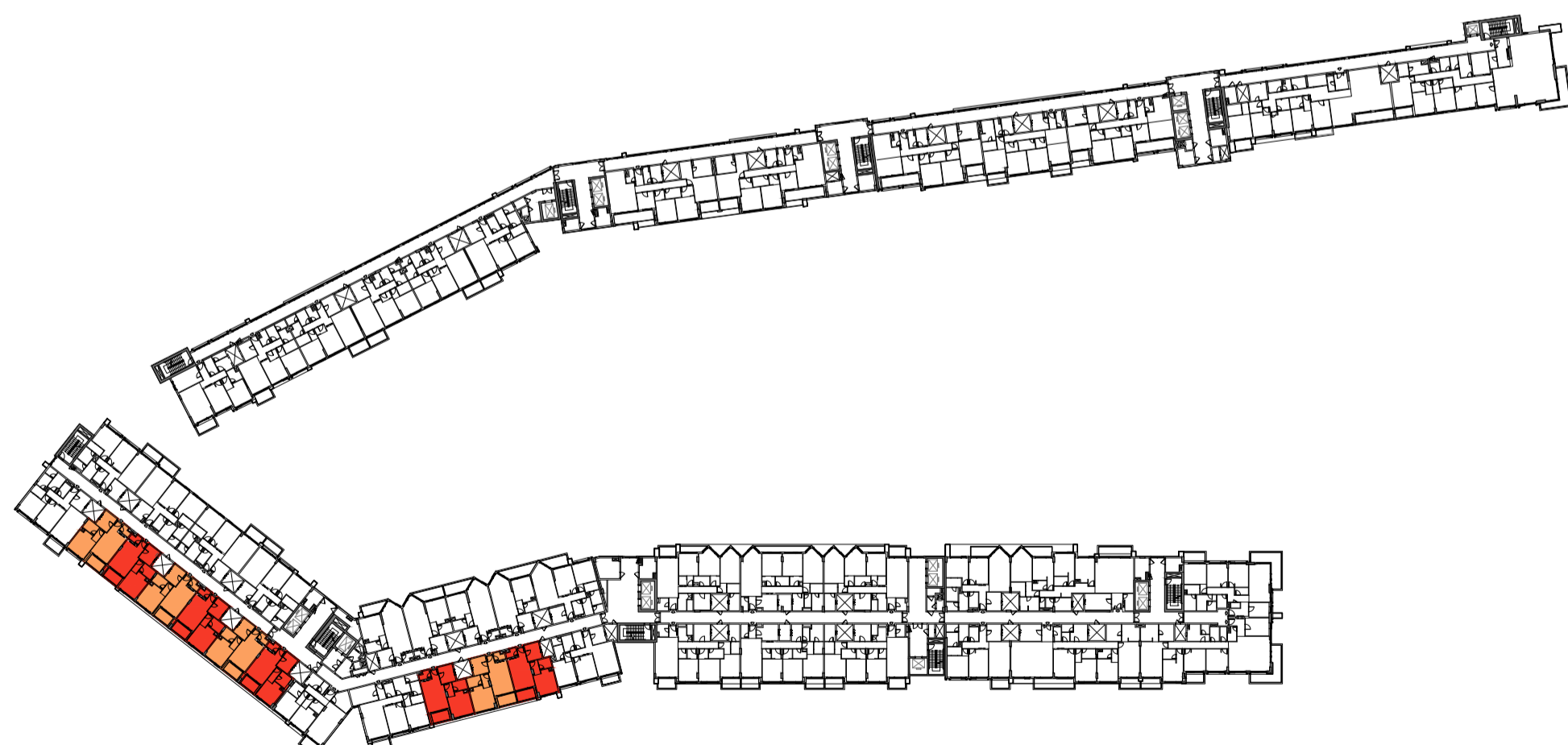
FIRST FLOOR
FLATS NO. : 126 TO 131, 139 TO 141, 156 TO 159



TYPICAL 2ND TO 3RD & 5TH TO 8TH FLOOR
FLATS NO. : 206 TO 209, 212 TO 213, 226 TO 231, 239 TO 241, 256 TO 259, 306 TO 309, 312 TO 313, 326 TO 331, 339 TO 341, 356 TO 359, 506 TO 509, 512 TO 513, 526 TO 531, 539 TO 541, 556 TO 559, 606 TO 609, 612 TO 613, 626 TO 631, 639 TO 641, 656 TO 659, 706 TO 709, 712 TO 713, 726 TO 731, 739 TO 741, 756 TO 759, 806 TO 809, 812 TO 813, 826 TO 831, 839 TO 841, 856 TO 859



FOURTH FLOOR
FLATS NO. : 406 TO 409, 412 TO 413, 426 TO 431, 439 TO 441, 456 TO 459



NINTH FLOOR
FLATS NO. : 919 TO 924, 932 TO 934



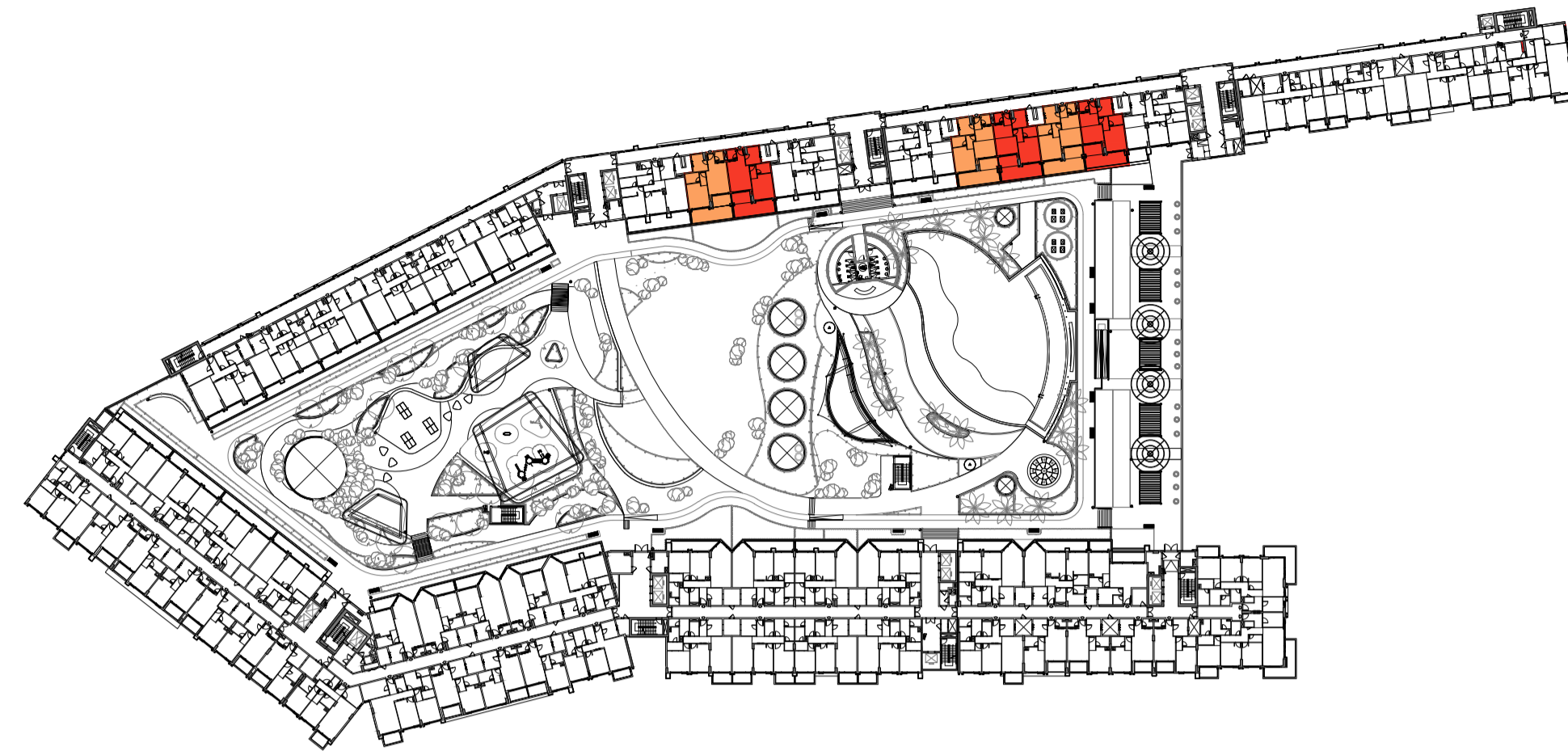
FLAT TYPE	= 1 BEDROOM - TYPE A (R1-A)
NO. OF UNITS	= 163
FLAT AREA (W/O BALCONY)	= FROM 65.00 SQ.M. / 700.00 SQ.FT. TO 69.00 SQ.M. / 763.00 SQ.FT.
BALCONY AREA	= FROM 6.50 SQ.M. / 70.00 SQ.FT. TO 7.50 SQ.M. / 81.00 SQ.FT.
TOTAL NET AREA =	= FROM 72.00 SQ.M. / 775.00 SQ.FT. TO 76.00 SQ.M. / 818.00 SQ.FT.

PROPOSED MIXED-USE BUILDING

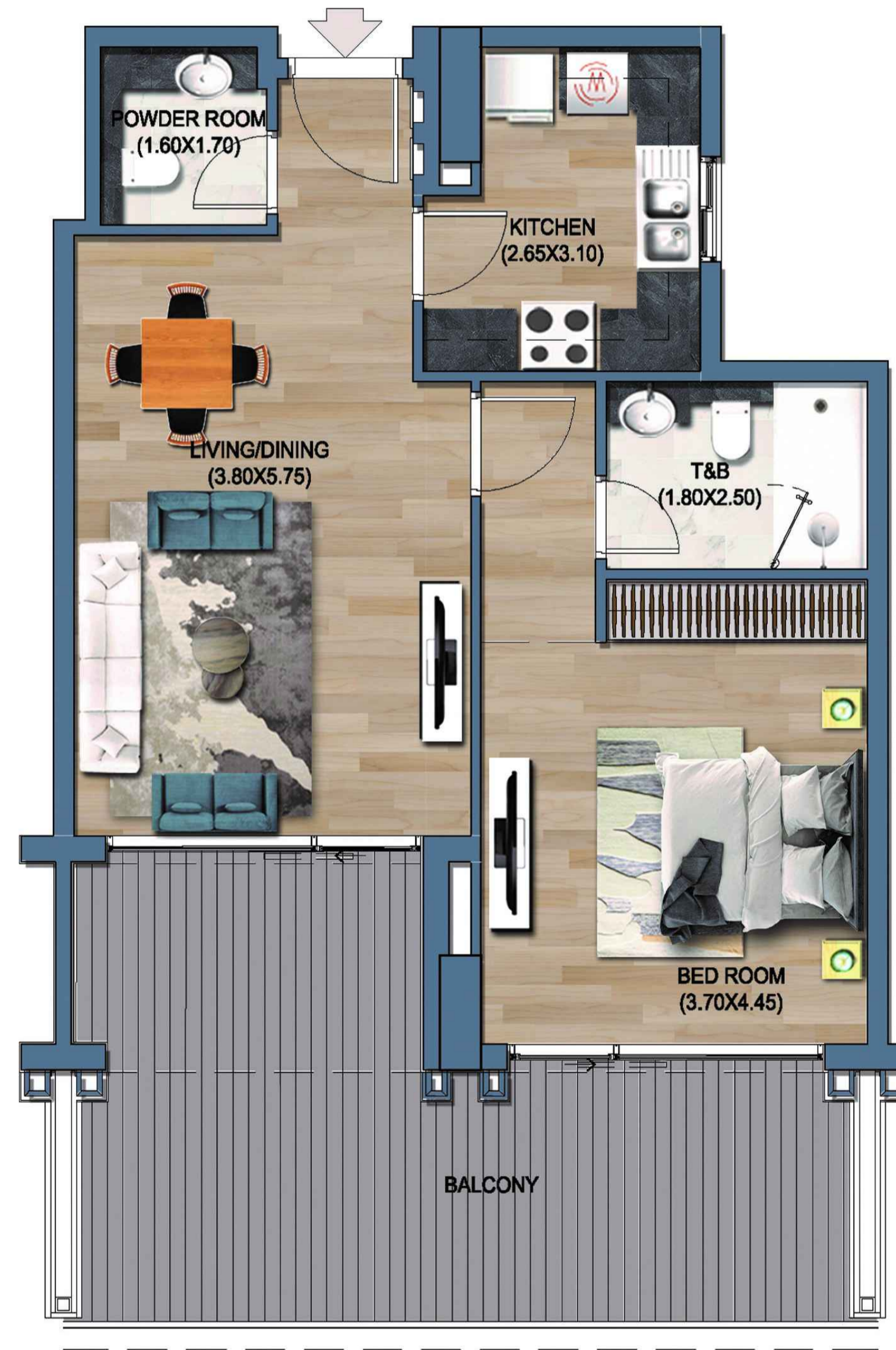
**B+G (COMMERCIAL/ PARKING) + 1ST PODIUM (RESIDENTIAL/ PARKING) + 2ND PODIUM (RESIDENTIAL/ PARKING/ SERVICES)
+ 8 TYPICAL RESIDENTIAL FLOORS + PENTHOUSE RESIDENTIAL FLOOR
ON PLOT NO. 108/A AT AL MEDIFI AREA, KHORFAKKAN, SHARJAH FOR M/S SHARJAH ISLAMIC BANK**

MARCH - 2026

1 BEDROOM - TYPE B (R1-B)



FIRST FLOOR
FLATS NO. : 106 TO 109, 112 TO 113



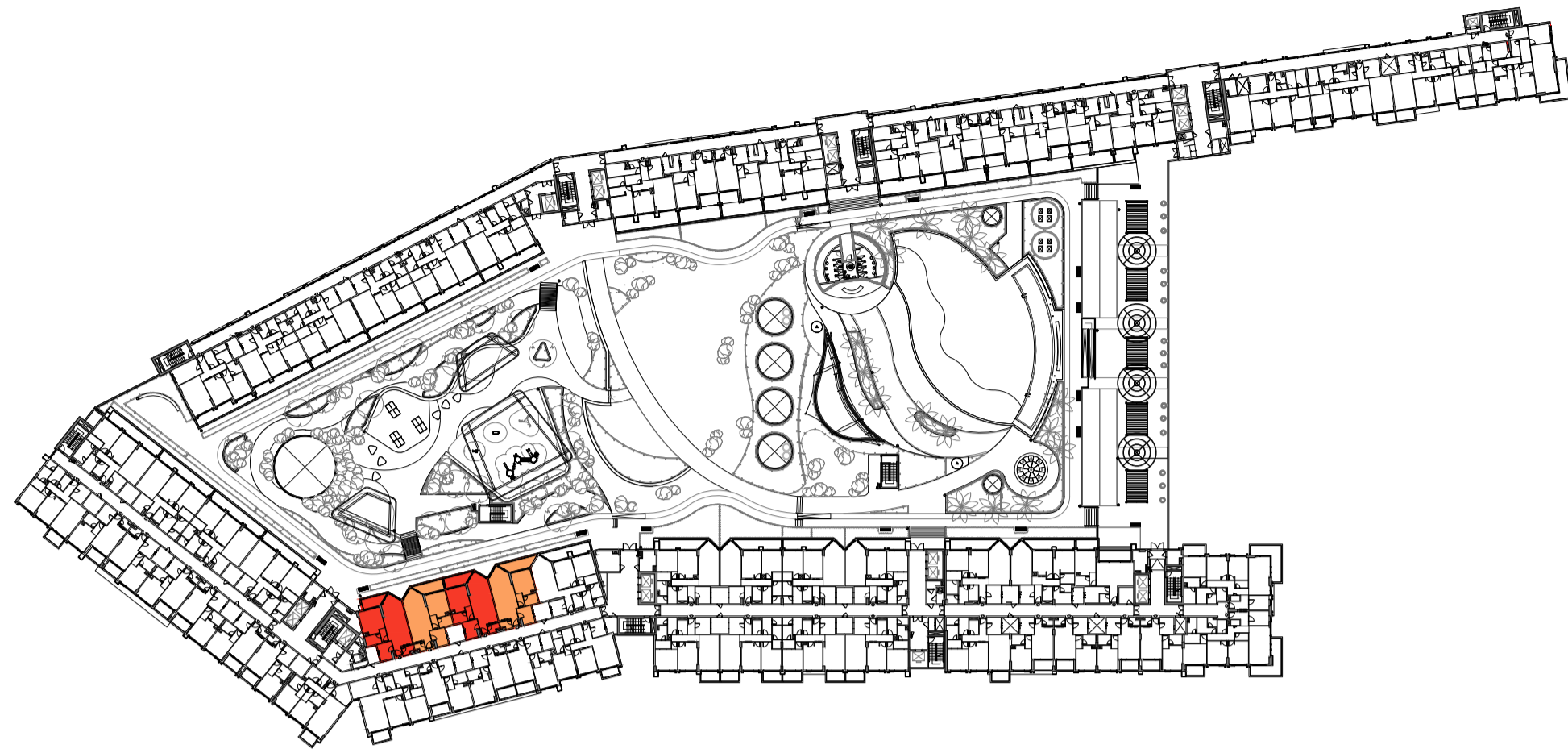
FLAT TYPE	= 1 BEDROOM - TYPE B (R1-B)
NO. OF UNITS	= 6
FLAT AREA (W/O BALCONY)	= FROM 65.00 SQ.M. / 700.00 SQ.FT. TO 67.00 SQ.M. / 721.00 SQ.FT.
BALCONY AREA	= FROM 27.70 SQ.M. / 298.00 SQ.FT. TO 28.30 SQ.M. / 305.00 SQ.FT.
TOTAL NET AREA =	= FROM 93.00 SQ.M. / 1,001.10 SQ.FT. TO 94.00 SQ.M. / 1012.00 SQ.FT.

MARCH - 2026

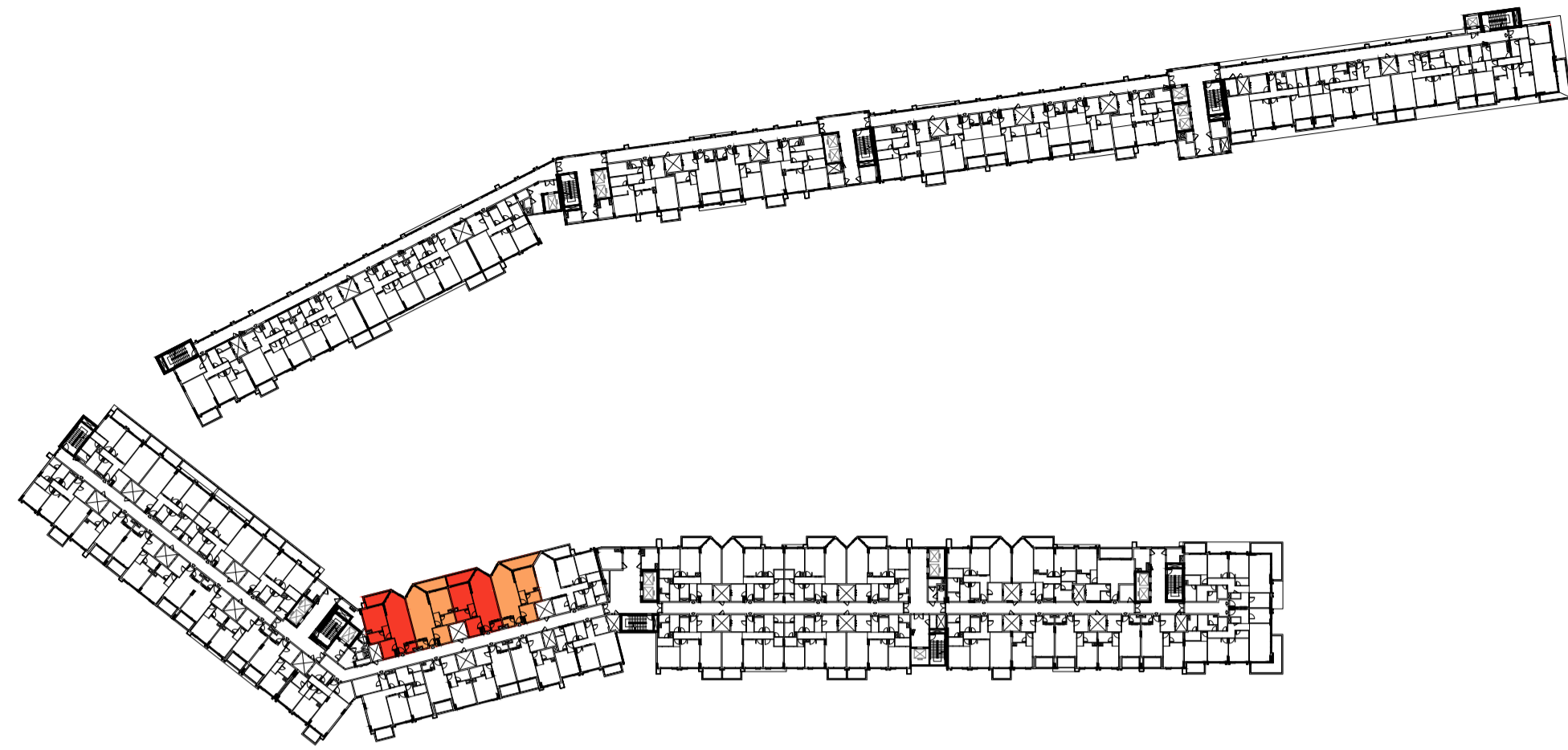
PROPOSED MIXED-USE BUILDING

**B+G (COMMERCIAL/ PARKING) + 1ST PODIUM (RESIDENTIAL/ PARKING) + 2ND PODIUM (RESIDENTIAL/ PARKING/ SERVICES)
+ 8 TYPICAL RESIDENTIAL FLOORS + PENTHOUSE RESIDENTIAL FLOOR
ON PLOT NO. 108/A AT AL MEDIFI AREA, KHORFAKKAN, SHARJAH FOR M/S SHARJAH ISLAMIC BANK**

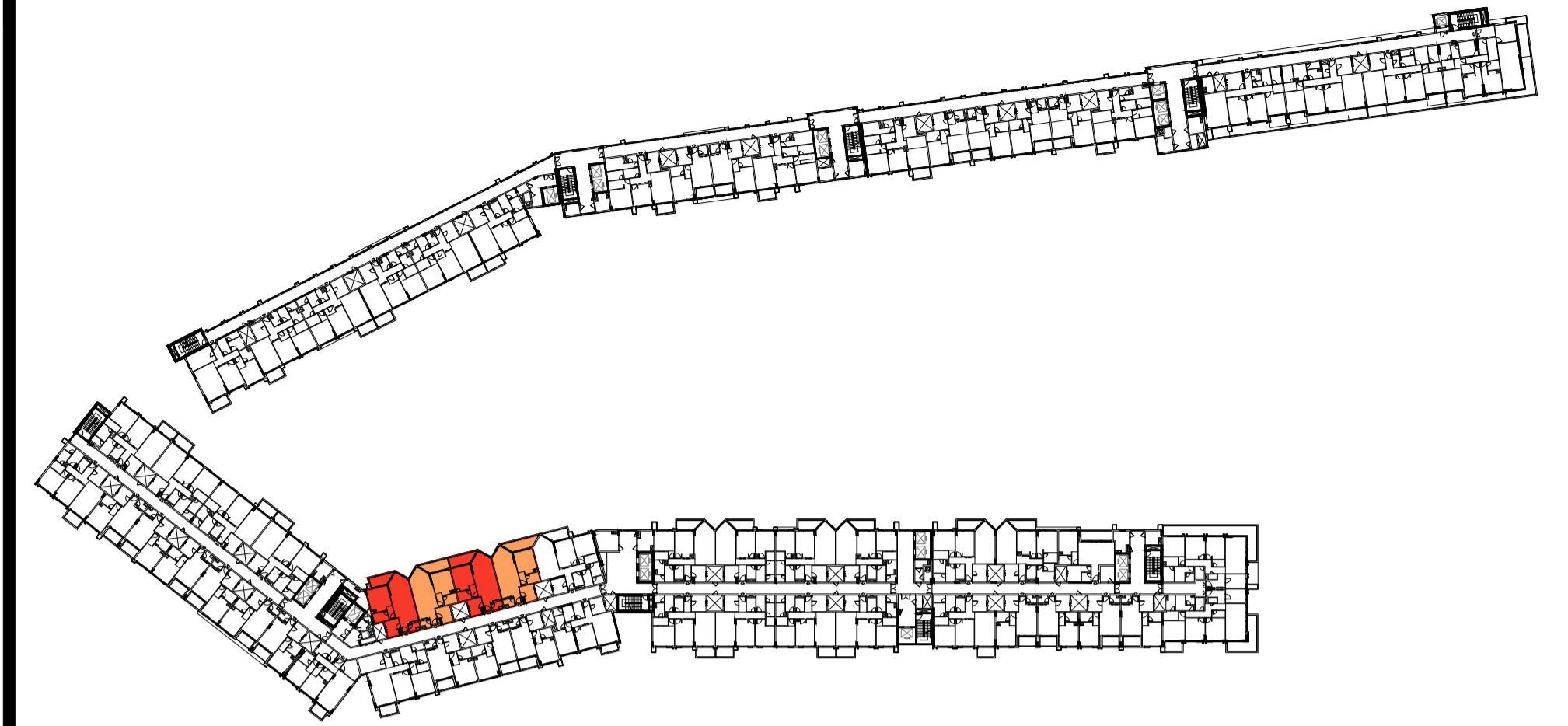
1 BEDROOM - TYPE C (R1-C)



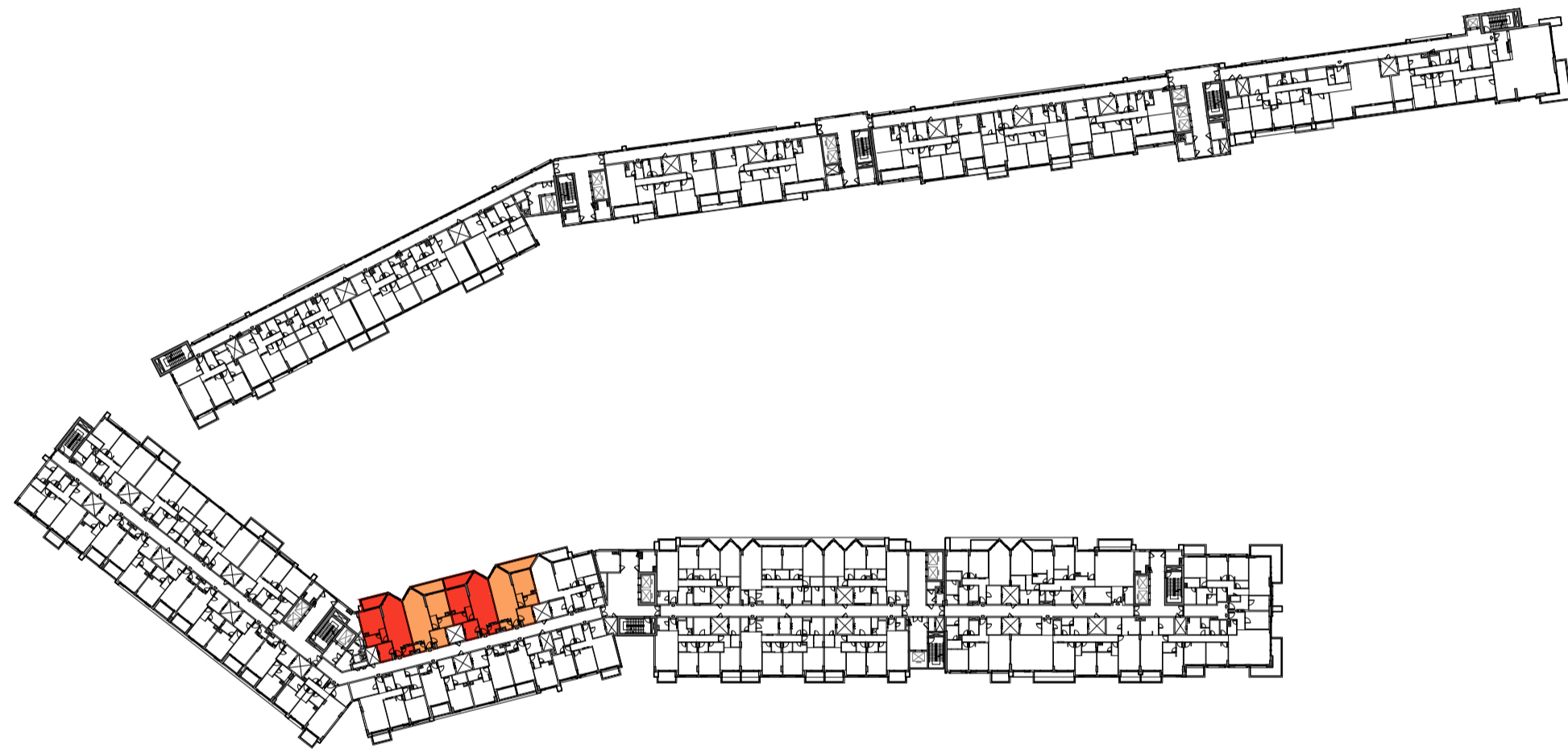
FIRST FLOOR
FLATS NO. : 133 TO 136



TYPICAL 2ND TO 3RD & 5TH TO 8TH FLOOR
FLATS NO. : 233 TO 236, 333 TO 336, 533 TO 536, 633 TO 636, 733 TO 736, 833 TO 836



FOURTH FLOOR
FLATS NO. : 433 TO 436



NINTH FLOOR
FLATS NO. : 926 TO 929



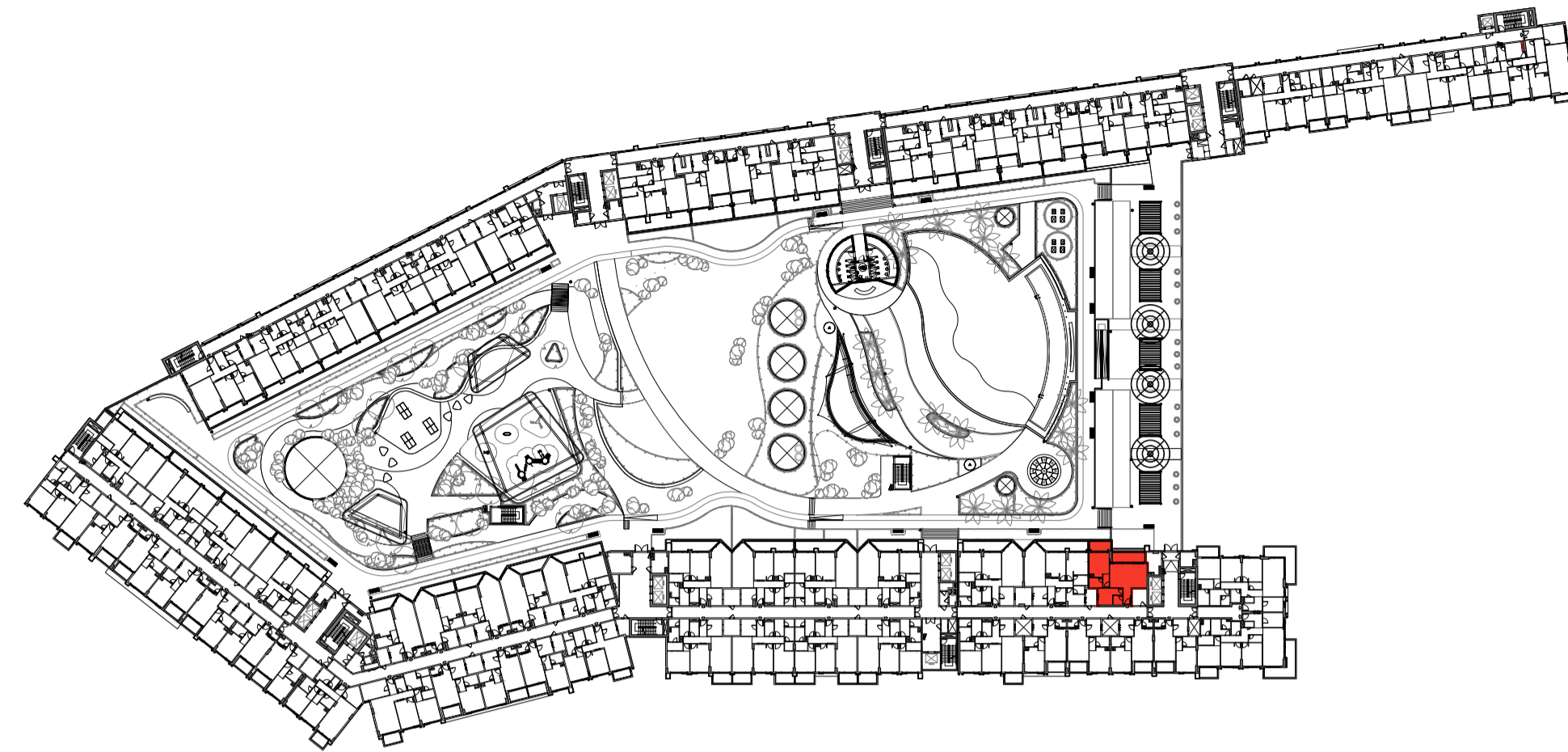
FLAT TYPE	= 1 BEDROOM - TYPE C (R1-C)
NO. OF UNITS	= 36
FLAT AREA (W/O BALCONY)	= FROM 78.00 SQ.M. / 840.00 SQ.FT. TO 82.00 SQ.M. / 883.00 SQ.FT.
BALCONY AREA	= FROM 9.00 SQ.M. / 97.00 SQ.FT. TO 12.00 SQ.M. / 129.00 SQ.FT.
TOTAL NET AREA =	= FROM 88.00 SQ.M. / 947.00 SQ.FT. TO 91.00 SQ.M. / 980.00 SQ.FT.

PROPOSED MIXED-USE BUILDING

B+G (COMMERCIAL/ PARKING) + 1ST PODIUM (RESIDENTIAL/ PARKING) + 2ND PODIUM (RESIDENTIAL/ PARKING/ SERVICES)
+ 8 TYPICAL RESIDENTIAL FLOORS + PENTHOUSE RESIDENTIAL FLOOR
ON PLOT NO. 108/A AT AL MEDIFI AREA, KHORFAKKAN, SHARJAH FOR M/S SHARJAH ISLAMIC BANK

MARCH - 2026

1 BEDROOM - TYPE D (R1-D)



FIRST FLOOR
FLAT NO. : 153



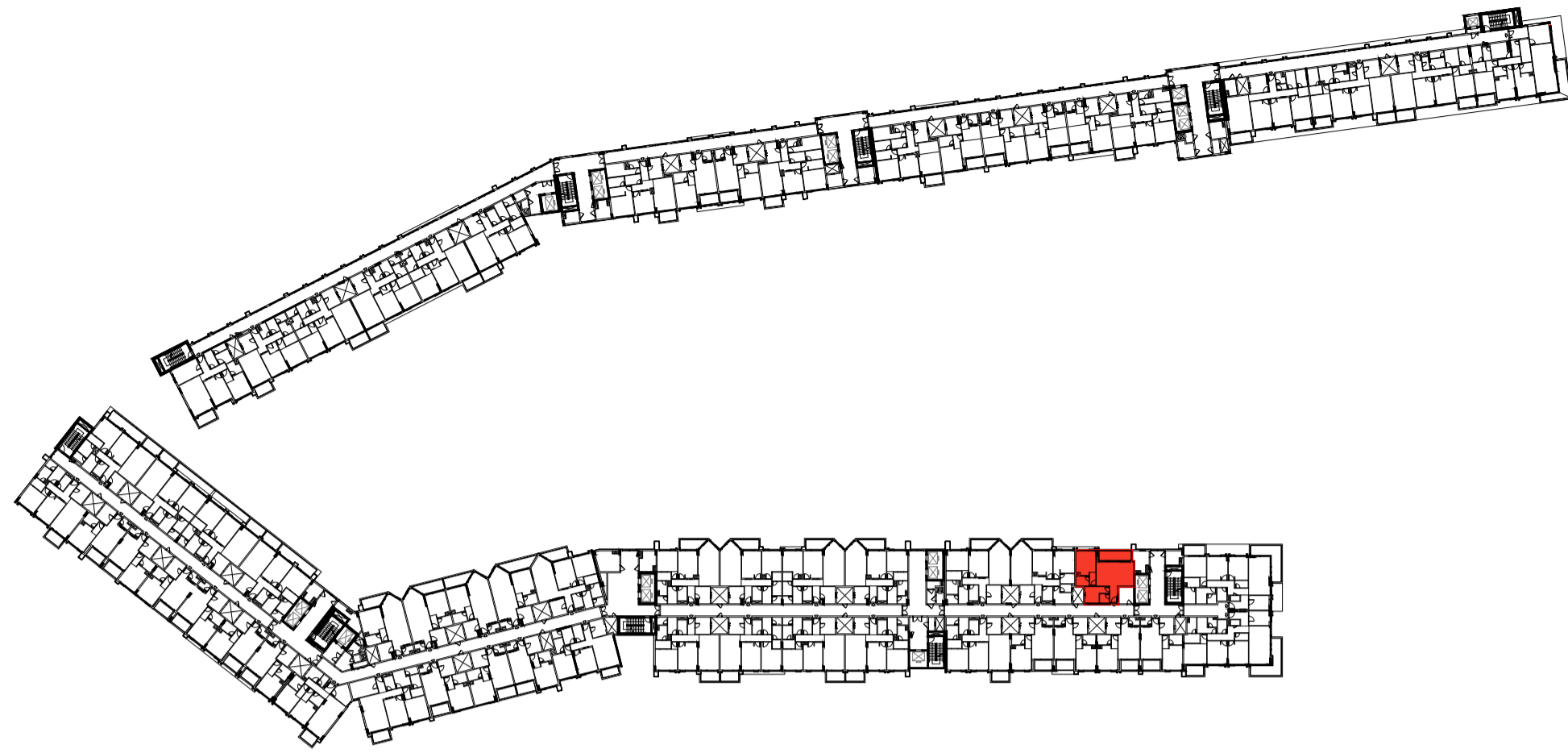
FLAT TYPE	= 1 BEDROOM - TYPE D (R1-D)
NO. OF UNITS	= 1
FLAT AREA (W/O BALCONY)	= 80.13 SQ.M. / 863.00 SQ.FT.
BALCONY AREA	= 20.94 SQ.M. / 225.00 SQ.FT.
TOTAL NET AREA =	= 101.07 SQ.M. / 1,088.00 SQ.FT.

MARCH - 2026

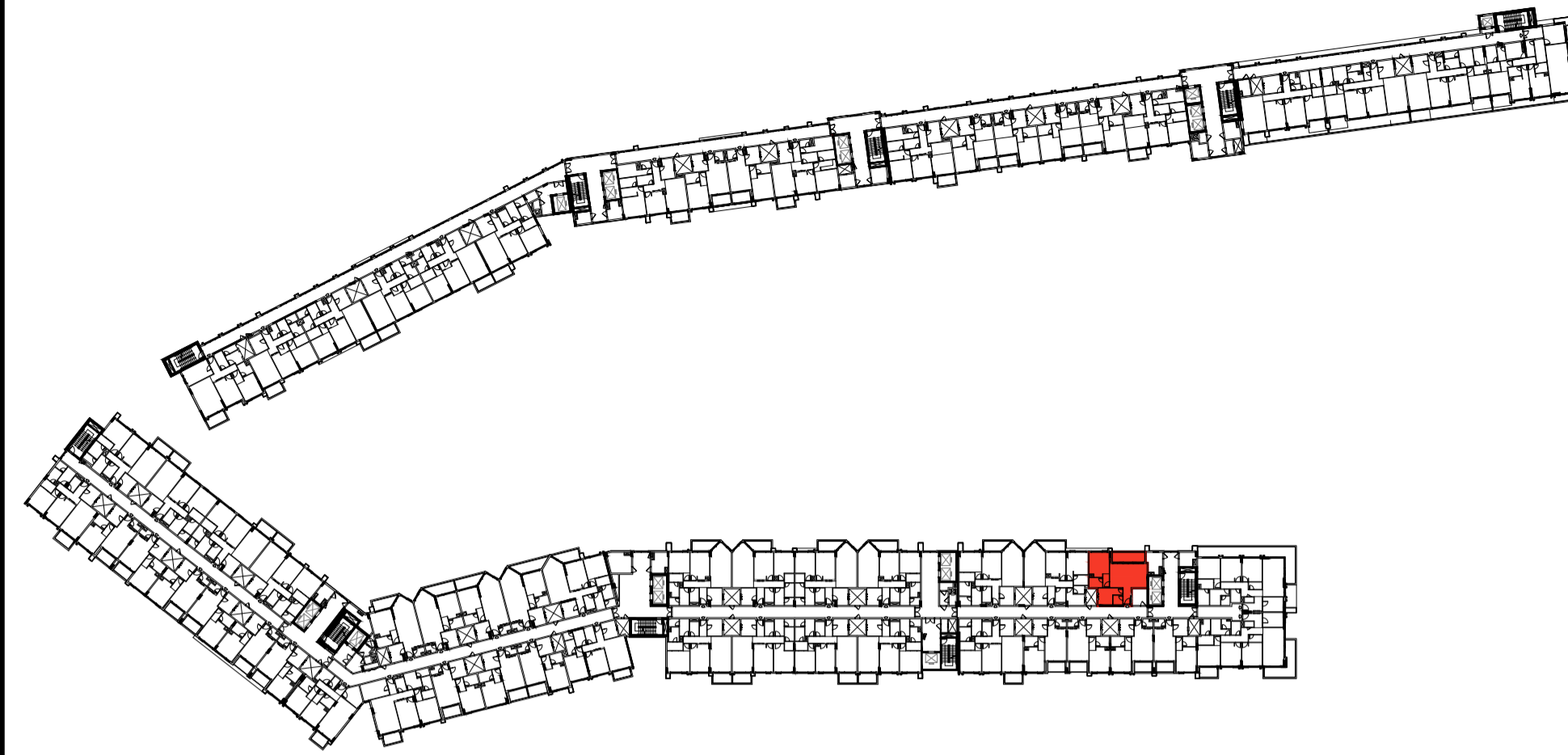
PROPOSED MIXED-USE BUILDING

B+G (COMMERCIAL/ PARKING) + 1ST PODIUM (RESIDENTIAL/ PARKING) + 2ND PODIUM (RESIDENTIAL/ PARKING/ SERVICES)
+ 8 TYPICAL RESIDENTIAL FLOORS + PENTHOUSE RESIDENTIAL FLOOR
ON PLOT NO. 108/A AT AL MEDIFI AREA, KHORFAKKAN, SHARJAH FOR M/S SHARJAH ISLAMIC BANK

1 BEDROOM - TYPE E (R1-E)



TYPICAL 2ND TO 3RD & 5TH TO 8TH FLOOR
FLATS NO. : 253, 353, 553, 653, 753, 853



FOURTH FLOOR
FLAT NO. : 453



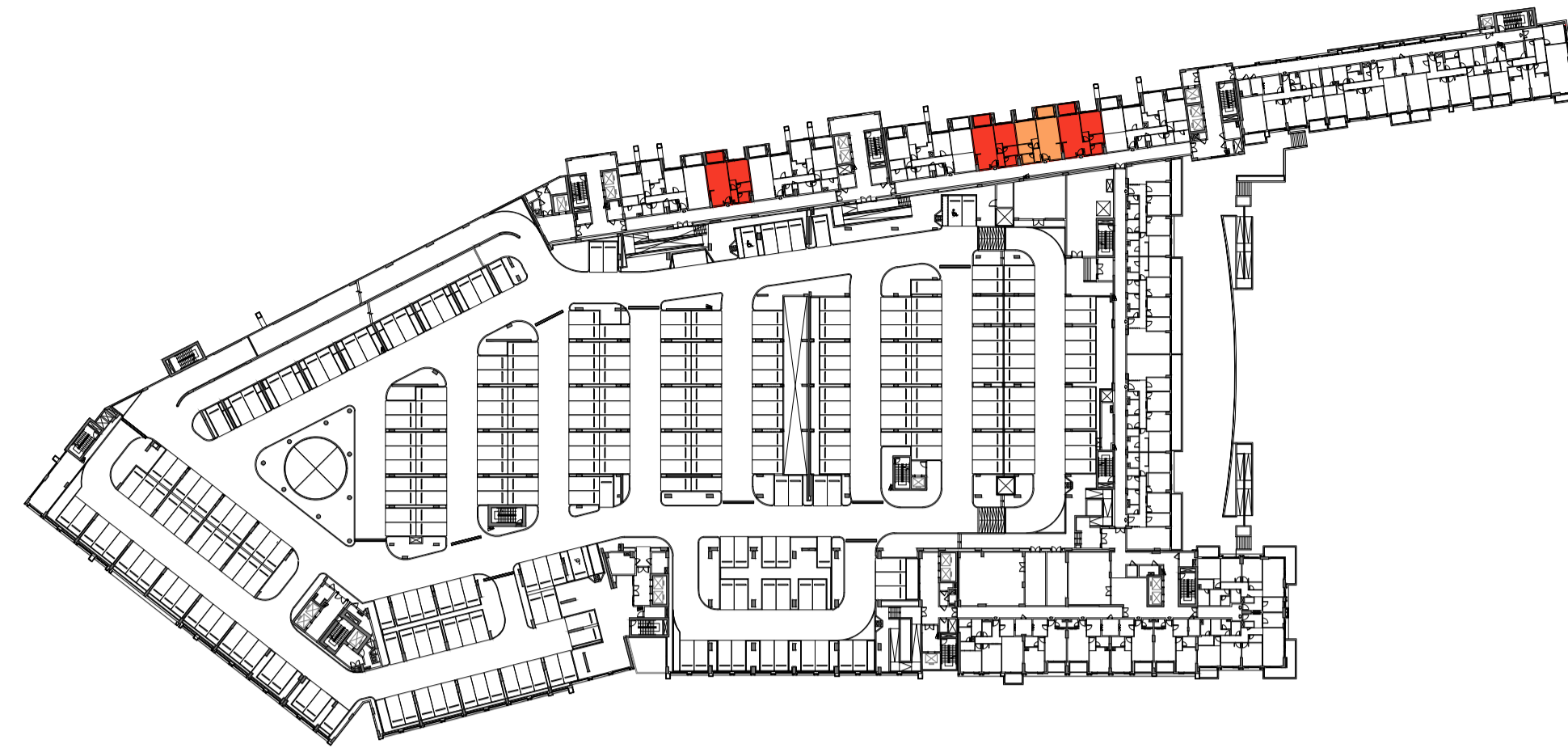
FLAT TYPE	= 1 BEDROOM - TYPE E (R1-E)
NO. OF UNITS	= 7
FLAT AREA (W/O BALCONY)	= 80.13 SQ.M. / 863.00 SQ.FT.
BALCONY AREA	= 12.18 SQ.M. / 131.00 SQ.FT.
TOTAL NET AREA =	= 92.31 SQ.M. / 994.00 SQ.FT.

MARCH - 2026

PROPOSED MIXED-USE BUILDING

**B+G (COMMERCIAL/ PARKING) + 1ST PODIUM (RESIDENTIAL/ PARKING) + 2ND PODIUM (RESIDENTIAL/ PARKING/ SERVICES)
+ 8 TYPICAL RESIDENTIAL FLOORS + PENTHOUSE RESIDENTIAL FLOOR
ON PLOT NO. 108/A AT AL MEDIFI AREA, KHORFAKKAN, SHARJAH FOR M/S SHARJAH ISLAMIC BANK**

1 BEDROOM - TYPE F (R1-F)



FIRST & SECOND PODIUM FLOOR
FLATS NO. : P106 TO P108, P111, P206 TO P208, P211



FLAT TYPE	= 1 BEDROOM - TYPE F (R1-F)
NO. OF UNITS	= 8
FLAT AREA (W/O BALCONY)	= FROM 61.00 SQ.M. / 657.00 SQ.FT. TO 63.00 SQ.M. / 678.00 SQ.FT.
BALCONY AREA	= FROM 7.20 SQ.M. / 78.00 SQ.FT. TO 7.70 SQ.M. / 83.00 SQ.FT.
TOTAL NET AREA =	= FROM 69.00 SQ.M. / 743.00 SQ.FT. TO 70.00 SQ.M. / 753.00 SQ.FT.

MARCH - 2026

PROPOSED MIXED-USE BUILDING

B+G (COMMERCIAL/ PARKING) + 1ST PODIUM (RESIDENTIAL/ PARKING) + 2ND PODIUM (RESIDENTIAL/ PARKING/ SERVICES)
+ 8 TYPICAL RESIDENTIAL FLOORS + PENTHOUSE RESIDENTIAL FLOOR
ON PLOT NO. 108/A AT AL MEDIFI AREA, KHORFAKKAN, SHARJAH FOR M/S SHARJAH ISLAMIC BANK