

منتجع خورفكان
KHORFAKKAN RESORT

An aerial photograph of a beach. The left side shows a wide expanse of golden sand. A small, dark shadow of a person is cast on the sand. The right side shows the ocean with vibrant turquoise water and white, frothy waves crashing against the shore. The text is overlaid on the right side of the image.

متعة العيش
على الشاطئ





1 Street
5 Street
Al Naour Supermarket
سوبر ماركت الناعور

Al Nu'man Bin Amr Street

Khorfakkan Municipality
بلدية خورفكان

ADNOC Service Station
| AI MARINE S/S (681)
ADNOC Service Station
| AI Khaleej S/S (680)

Al Zahrawi St

Khorfakkan
Passports Office
مكتب جوازات خورفكان

S112

KhorFakkan Club
نادي خورفكان
الرياضي الثقافي

Ohod St

25 Street

Amr Al Bily St

27 Street

Al Shaheed Al Fayyad St

Saqr Bin Mohammad
AlQassimi Stadium
استاد صقر بن
محمد القاسمي

Al Metalaa
Park
حديقة
المطالع العامة

Khor Fakkan
Beach

Khorfakkan
Resort
منتجع خورفكان

Khorfakkan
Hotel
فندق خورفكان

Rebou Lebanon

Khorfakkan
Amphitheatre
مدرج خورفكان

Khorfakkan
Waterfalls
شلالات خورفكان

Fakkan Wastewater
Treatment Plant

& Power Station
محطة توليد
الكهرباء والمياه

SEWA NATRUAL GAS
OFFICE KHORFAKKAN



شاطئ خاص

يجمع المشروع بين روعة وسحر شاطئ
خورفكان ، وتصميم معماري أنيق
مستوحى من الثقافة المعمارية الحديثة.

يتميز المشروع بشاطئ خاص و بإطلالات لا
مثيل لها على البحر الفيروزي والجبال الرائعة
والمناظر الخلابة.

بالإضافة لمجموعه متنوعه من وسائل
الراحة والرفاهية العصرية، كما يقدم
فرصة فريدة لتجربة حياة شاطئية مميزة

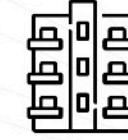
فخامة ورفاهية السكن



شاطئ خاص



9
مبانى سكنية



573
وحدة سكنية



19
متجر متنوع



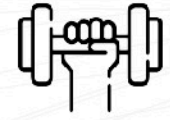
مرسى يخوت



واجهات بحرية



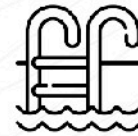
مخرج إلى شارع
الكورنيش



صالة ألعاب رياضية



منطقة ألعاب أطفال



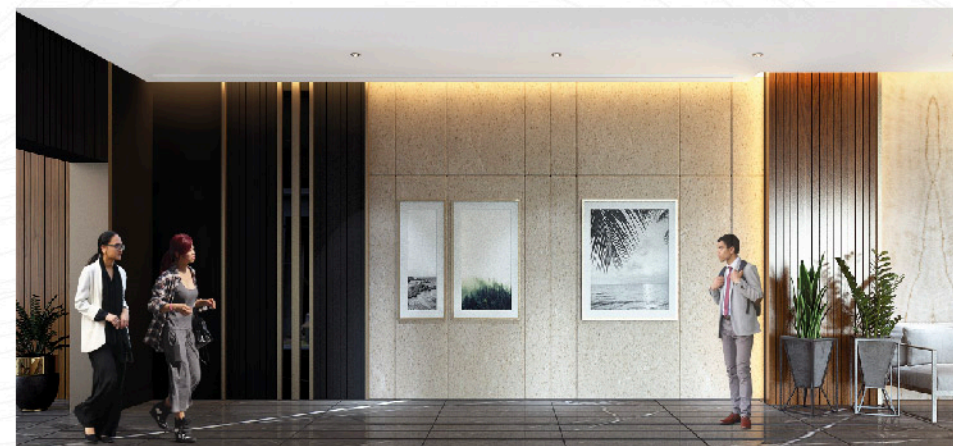
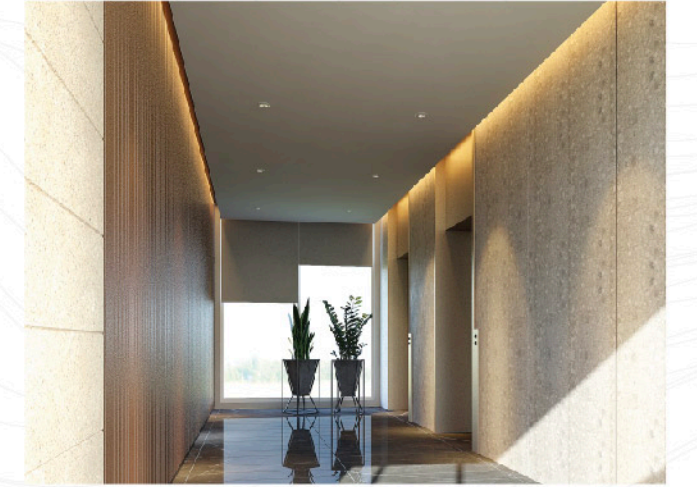
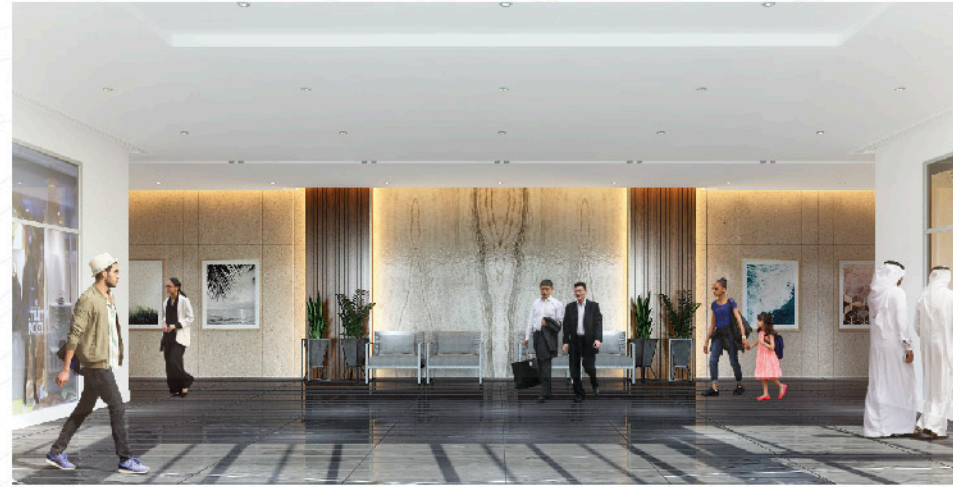
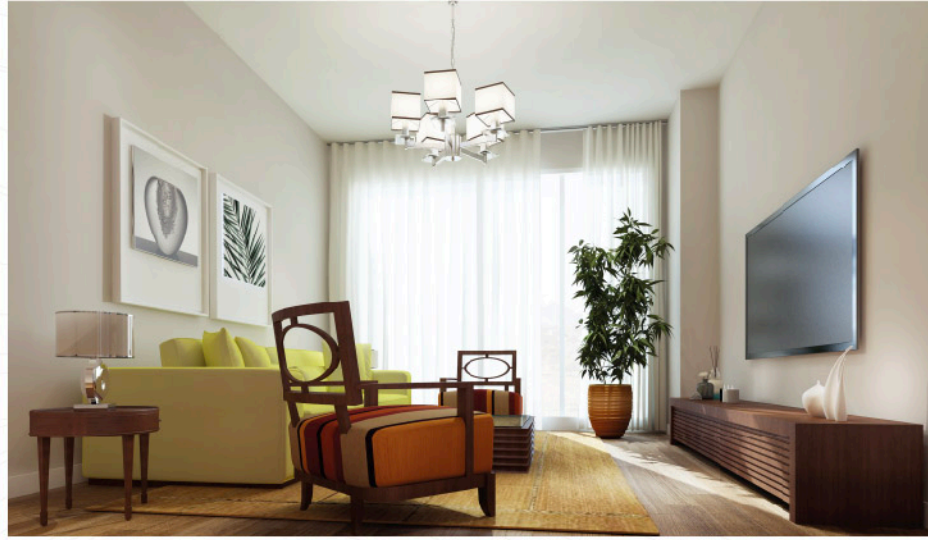
مساح مفتوحه
بمناظر طبيعية



قاعات متعددة الأغراض



التصاميم الداخلية



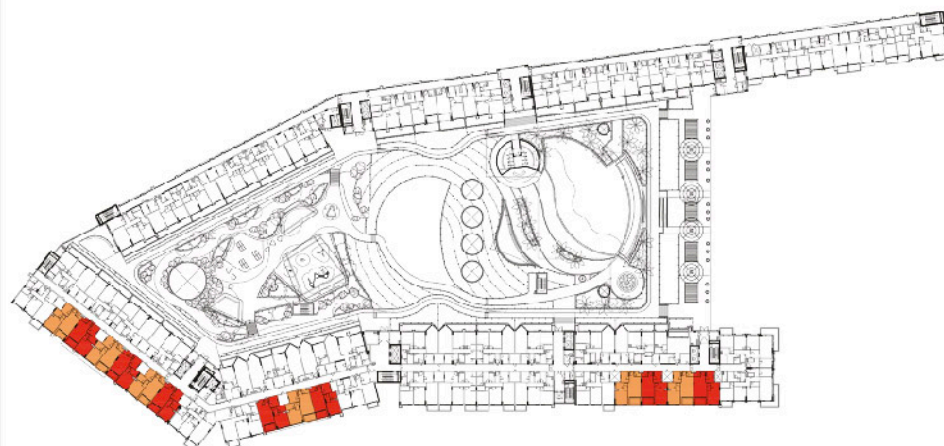
كافة أطقم الاثاث والإكسسوارات والأجهزة والديكورات المبينة في الصور لأغراض توضيحية فقط، ولن يتم تقديمها مع الشقق ووحدات البنتهاوس الخاصة بالمشروع.

نماذج من الشقق المكونة من غرفة وصالة و
غرفتين وصالة و ثلاث غرف نوم وصالة

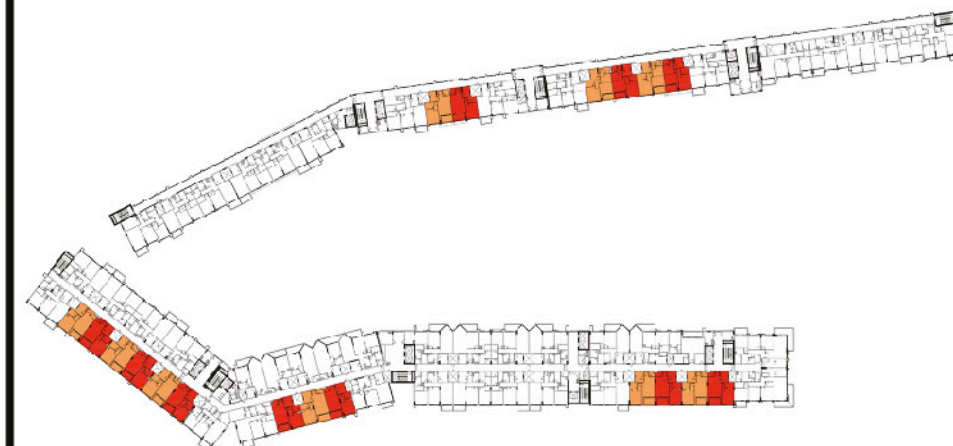
شقة مكونة من غرفة نوم واحدة - النموذج A



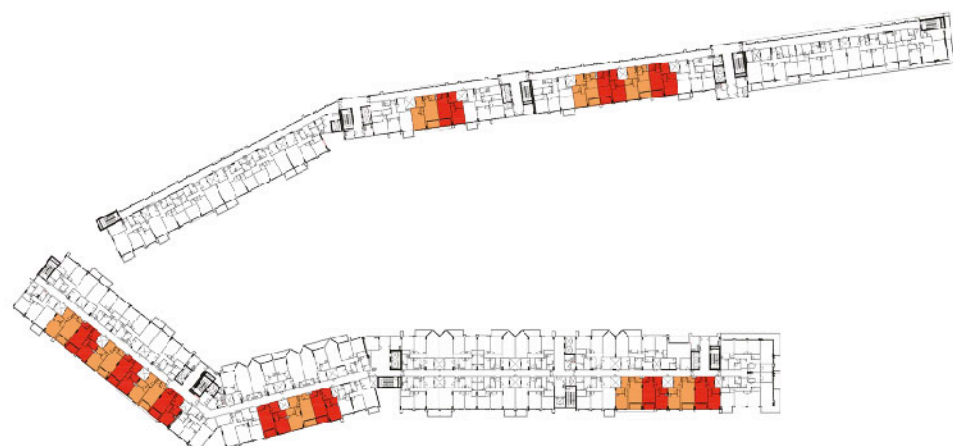
FIRST & SECOND PODIUM FLOOR
FLATS NO. : P114 TO P117, P214 TO P217



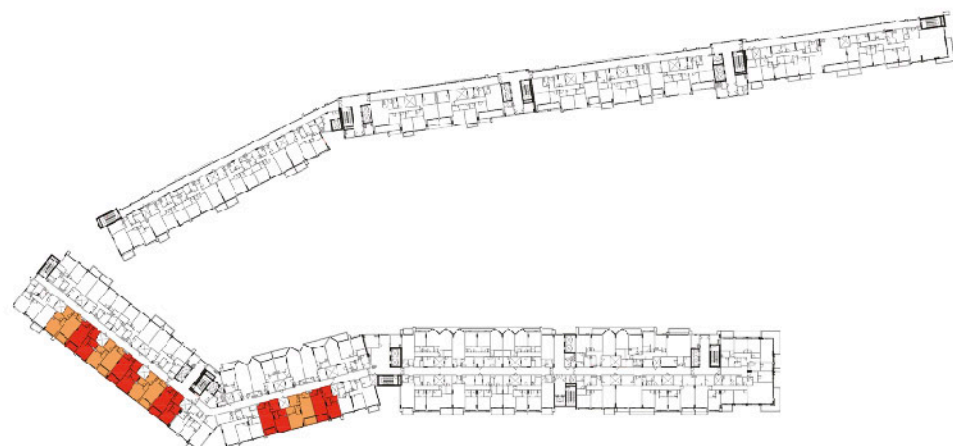
FIRST FLOOR
FLATS NO. : 126 TO 131, 139 TO 141, 156 TO 159



TYPICAL 2ND TO 3RD & 5TH TO 8TH FLOOR
FLATS NO. : 206 TO 209, 212 TO 213, 226 TO 231, 239 TO 241, 256 TO 259, 306 TO 309, 312 TO 313, 326 TO 331, 339 TO 341, 356 TO 359, 506 TO 509, 512 TO 513, 526 TO 531, 539 TO 541, 556 TO 559, 606 TO 609, 612 TO 613, 626 TO 631, 639 TO 641, 656 TO 659, 706 TO 709, 712 TO 713, 726 TO 731, 739 TO 741, 756 TO 759, 806 TO 809, 812 TO 813, 826 TO 831, 839 TO 841, 856 TO 859



FOURTH FLOOR
FLATS NO. : 406 TO 409, 412 TO 413, 426 TO 431, 439 TO 441, 456 TO 459

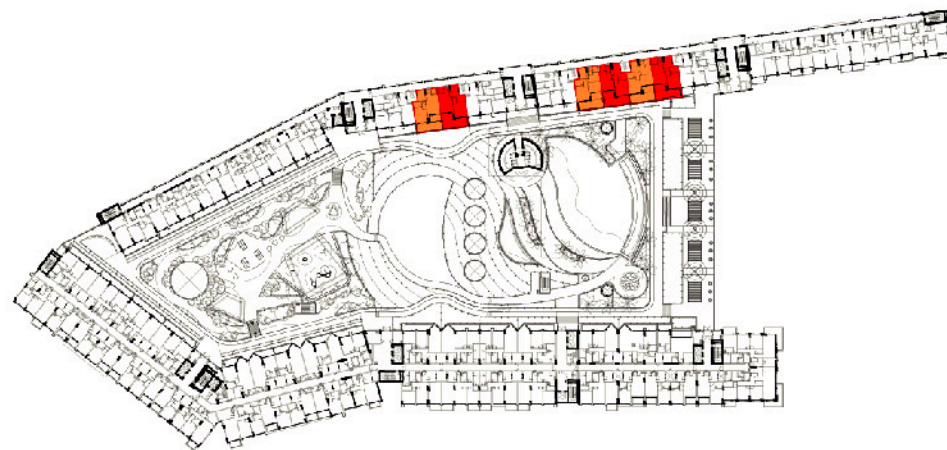


NINTH FLOOR
FLATS NO. : 919 TO 924, 932 TO 934

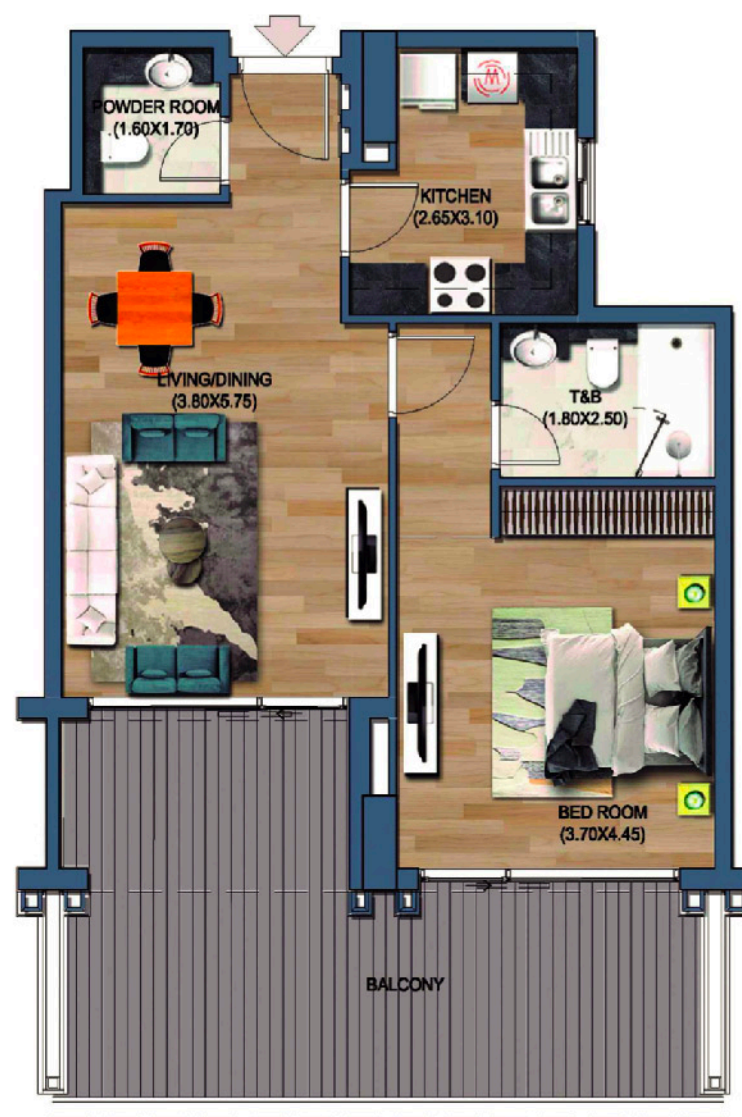


FLAT TYPE	= 1 BEDROOM - TYPE A (R1-A)
NO. OF UNITS	= 163
FLAT AREA (W/O BALCONY)	= FROM 65.00 SQ.M. / 700.00 SQ.FT. TO 69.00 SQ.M. / 763.00 SQ.FT.
BALCONY AREA	= FROM 6.50 SQ.M. / 70.00 SQ.FT. TO 7.50 SQ.M. / 81.00 SQ.FT.
TOTAL NET AREA =	= FROM 72.00 SQ.M. / 775.00 SQ.FT. TO 76.00 SQ.M. / 818.00 SQ.FT.

شقة مكونة من غرفة نوم واحدة - النموذج B

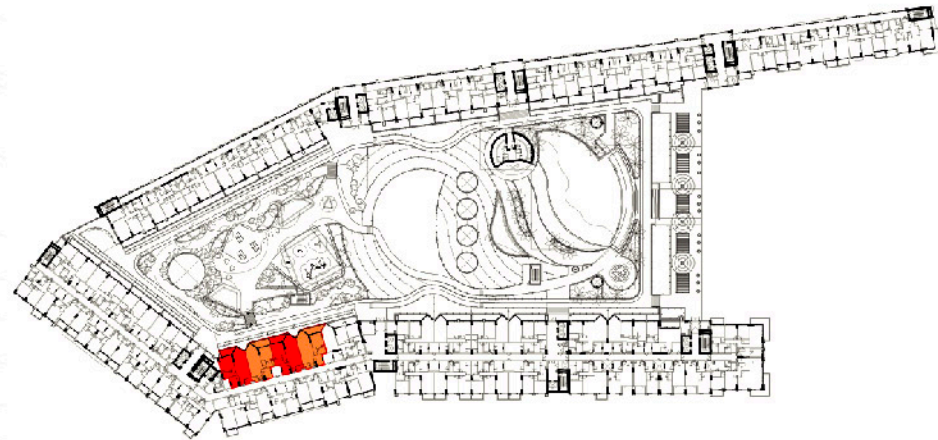


FIRST FLOOR
FLATS NO. : 106 TO 109, 112 TO 113

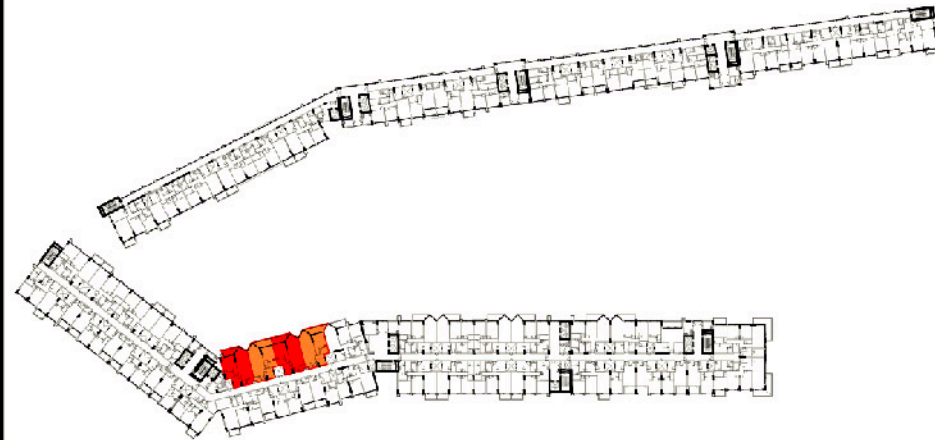


FLAT TYPE	= 1 BEDROOM - TYPE B (R1-B)
NO. OF UNITS	= 6
FLAT AREA (W/O BALCONY)	= FROM 65.00 SQ.M. / 700.00 SQ.FT. TO 67.00 SQ.M. / 721.00 SQ.FT.
BALCONY AREA	= FROM 27.70 SQ.M. / 298.00 SQ.FT. TO 28.30 SQ.M. / 305.00 SQ.FT.
TOTAL NET AREA =	= FROM 93.00 SQ.M. / 1,001.10 SQ.FT. TO 94.00 SQ.M. / 1012.00 SQ.FT.

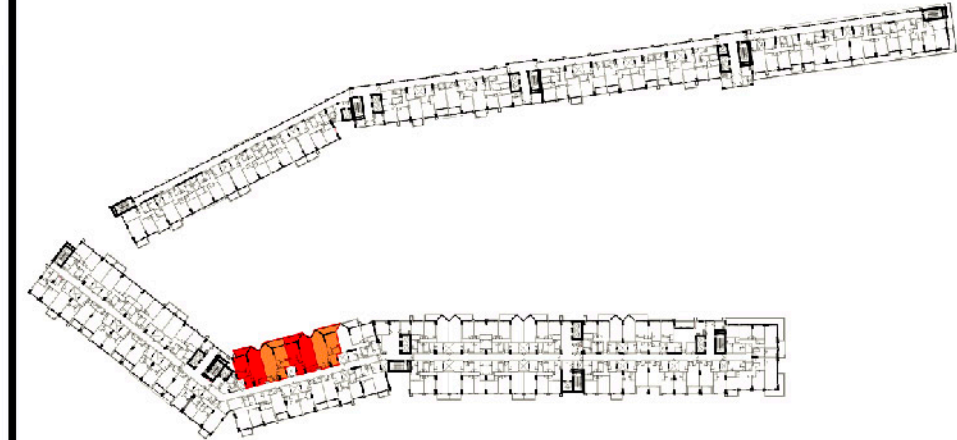
شقة مكونة من غرفة نوم واحدة - النموذج C



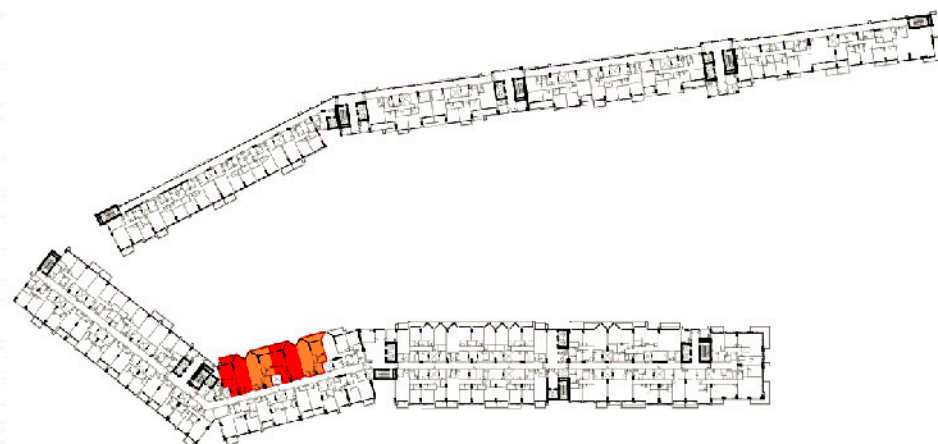
FIRST FLOOR
FLATS NO. : 133 TO 136



TYPICAL 2ND TO 3RD & 5TH TO 8TH FLOOR
FLATS NO. : 233 TO 236, 333 TO 336, 533 TO 536, 633 TO 636, 733 TO 736, 833 TO 836



FOURTH FLOOR
FLATS NO. : 433 TO 436

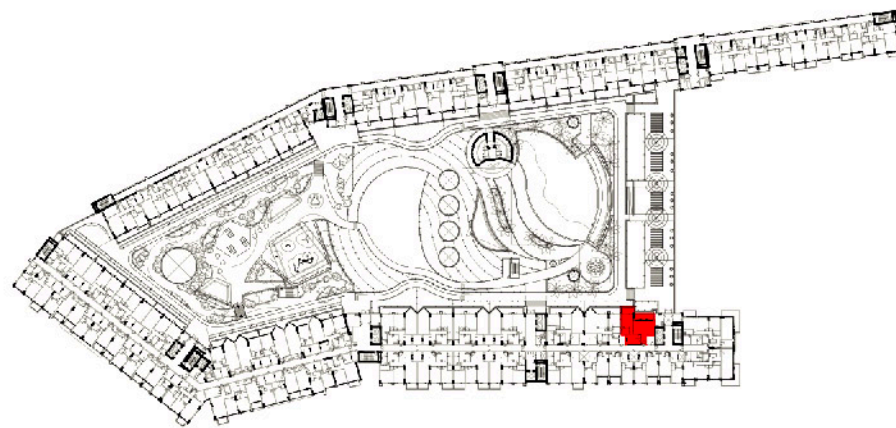


NINTH FLOOR
FLATS NO. : 926 TO 929



FLAT TYPE	= 1 BEDROOM - TYPE C (R1-C)
NO. OF UNITS	= 36
FLAT AREA (W/O BALCONY)	= FROM 78.00 SQ.M. / 840.00 SQ.FT. TO 82.00 SQ.M. / 883.00 SQ.FT.
BALCONY AREA	= FROM 9.00 SQ.M. / 97.00 SQ.FT. TO 12.00 SQ.M. / 129.00 SQ.FT.
TOTAL NET AREA =	= FROM 88.00 SQ.M. / 947.00 SQ.FT. TO 91.00 SQ.M. / 980.00 SQ.FT.

شقة مكونة من غرفة نوم واحدة - النموذج D

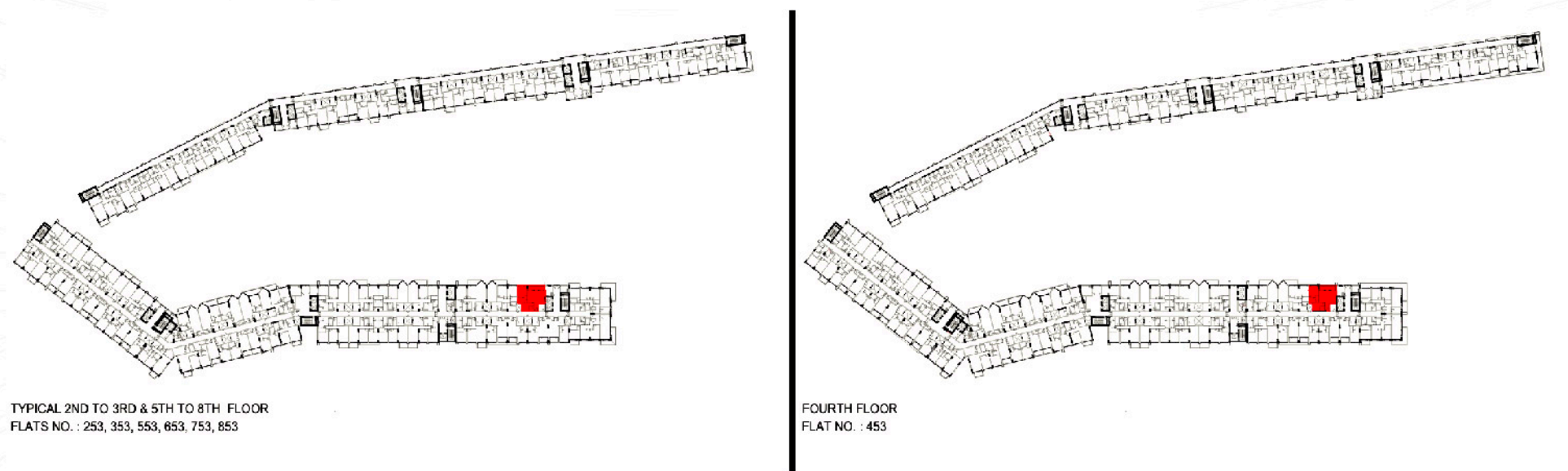


FIRST FLOOR
FLAT NO.: 153



FLAT TYPE	= 1 BEDROOM - TYPE D (R1-D)
NO. OF UNITS	= 1
FLAT AREA (W/O BALCONY)	= 80.13 SQ.M. / 863.00 SQ.FT.
BALCONY AREA	= 20.94 SQ.M. / 225.00 SQ.FT.
TOTAL NET AREA =	= 101.07 SQ.M. / 1,088.00 SQ.FT.

شقة مكونه من غرفة نوم واحدة - النموذج E



FLAT TYPE	= 1 BEDROOM - TYPE E (R1-E)
NO. OF UNITS	= 7
FLAT AREA (W/O BALCONY)	= 80.13 SQ.M. / 863.00 SQ.FT.
BALCONY AREA	= 12.18 SQ.M. / 131.00 SQ.FT.
TOTAL NET AREA =	= 92.31 SQ.M. / 994.00 SQ.FT.

شقة مكونه من غرفة نوم واحدة - النموذج F

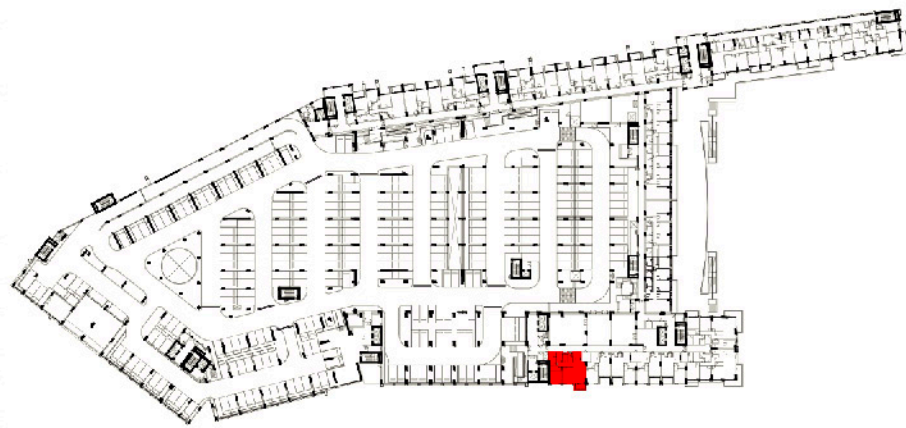


FIRST & SECOND PODIUM FLOOR
FLATS NO.: P106 TO P108, P111, P206 TO P208, P211

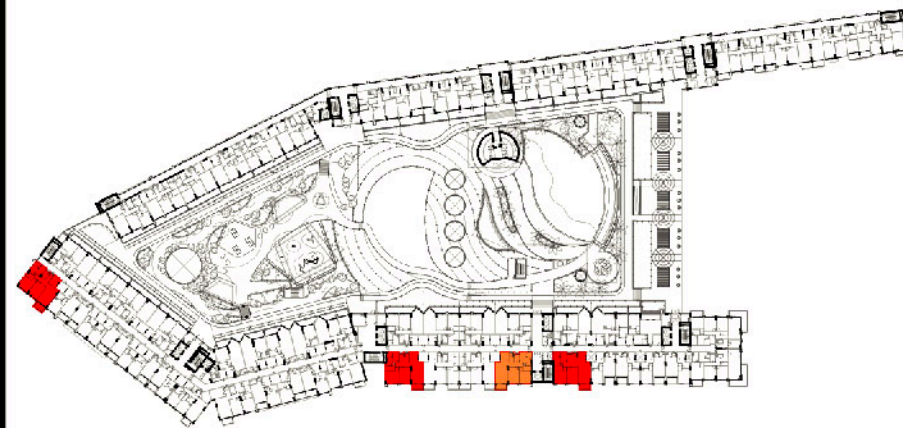


FLAT TYPE	= 1 BEDROOM - TYPE F (R1-F)
NO. OF UNITS	= 8
FLAT AREA (W/O BALCONY)	= FROM 61.00 SQ.M. / 657.00 SQ.FT. TO 63.00 SQ.M. / 678.00 SQ.FT.
BALCONY AREA	= FROM 7.20 SQ.M. / 78.00 SQ.FT. TO 7.70 SQ.M. / 83.00 SQ.FT.
TOTAL NET AREA =	= FROM 69.00 SQ.M. / 743.00 SQ.FT. TO 70.00 SQ.M. / 753.00 SQ.FT.

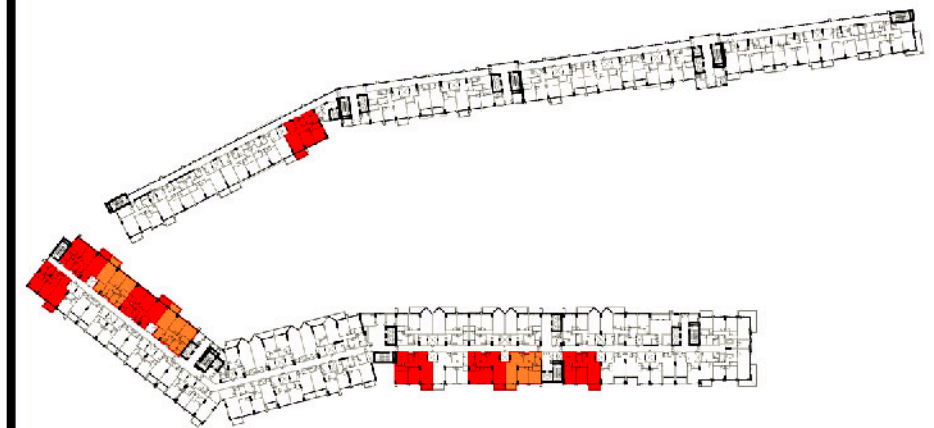
شقة مكونة من غرفتين نوم - النموذج A



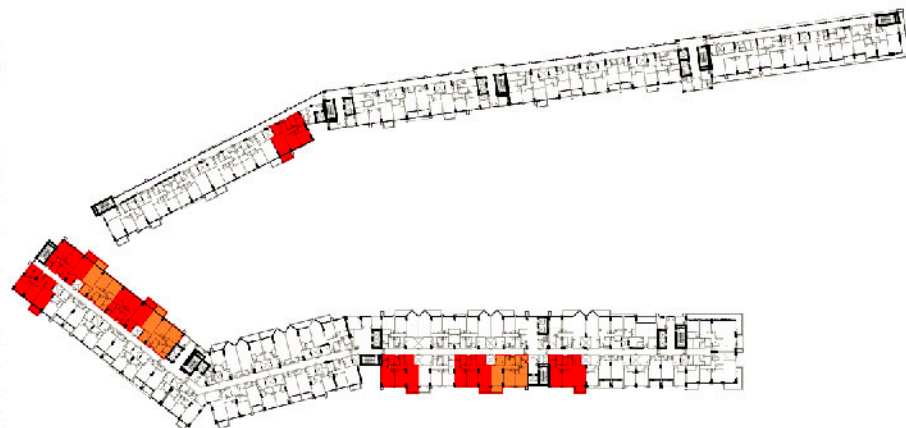
FIRST & SECOND PODIUM FLOOR
FLATS NO. : P113 & P213



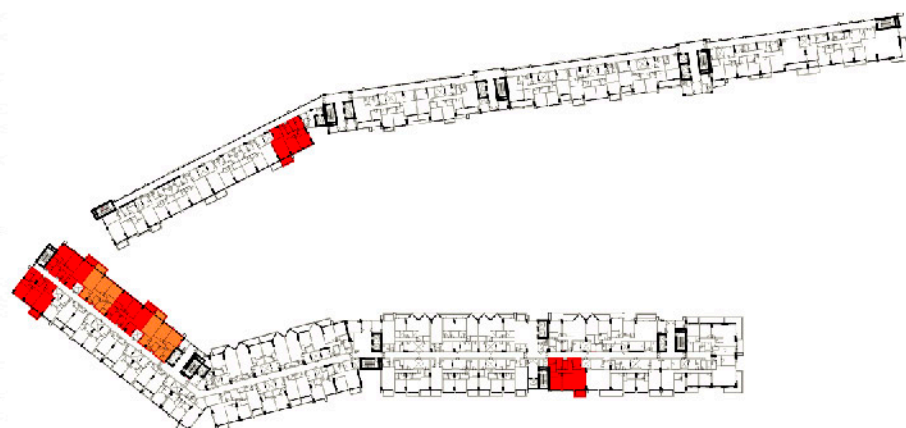
FIRST FLOOR
FLATS NO. : 125, 147, 150, 155



TYPICAL 2ND TO 3RD & 5TH TO 8TH FLOOR
FLATS NO. : 215, 221 TO 225, 247, 249, 250, 255, 315, 321 TO 325, 347, 349, 350, 355, 515, 521 TO 525, 547, 549, 550, 555, 615, 621 TO 625, 647, 649, 650, 655, 715, 721 TO 725, 747, 749, 750, 755, 815, 821 TO 825, 847, 849, 850, 855



FOURTH FLOOR
FLATS NO. : 415, 421 TO 425, 447, 449, 450, 455

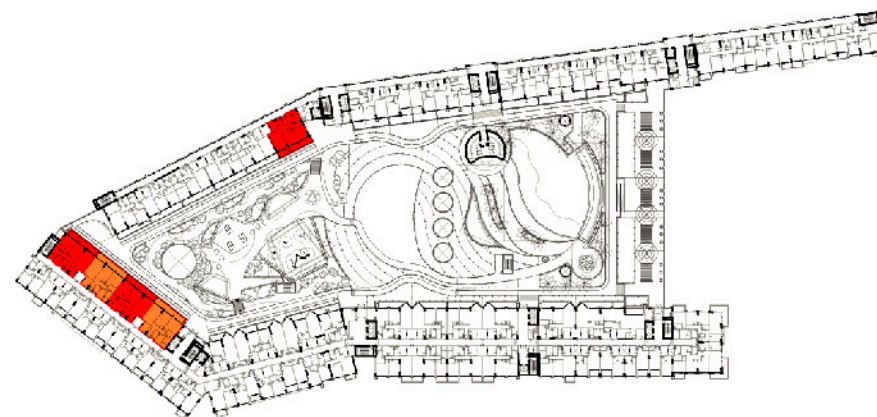


NINTH FLOOR
FLATS NO. : 908, 914 TO 918, 945



FLAT TYPE	= 2 BEDROOM - TYPE A (R2-A)
NO. OF UNITS	= 83
FLAT AREA (W/O BALCONY)	= FROM 107.00 SQ.M. / 1,150.00 SQ.FT. TO 116.00 SQ.M. / 1,249.00 SQ.FT.
BALCONY AREA	= FROM 7.00 SQ.M. / 75.00 SQ.FT. TO 8.00 SQ.M. / 86.00 SQ.FT.
TOTAL NET AREA =	= FROM 114.00 SQ.M. / 1,227.00 SQ.FT. TO 124.00 SQ.M. / 1,335.00 SQ.FT.

شقة مكونة من غرفتين نوم - النموذج B

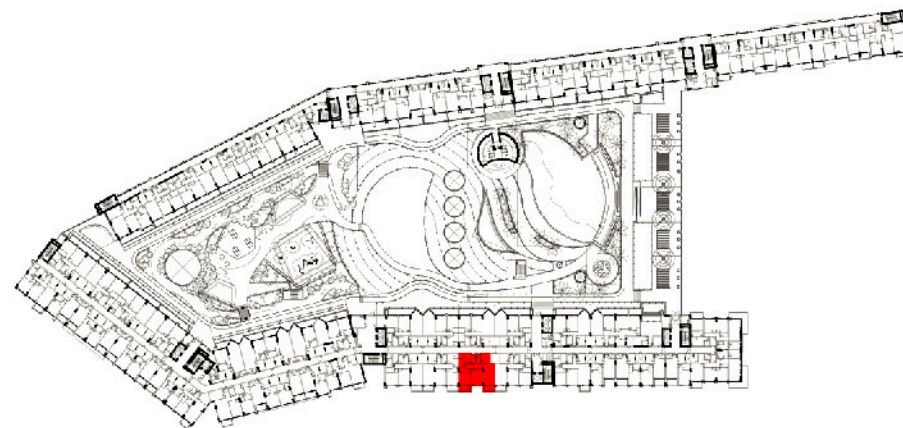


FIRST FLOOR
FLATS NO. : 115, 121 TO 124



FLAT TYPE	= 2 BEDROOM - TYPE B (R2-B)
NO. OF UNITS	= 5
FLAT AREA (W/O BALCONY)	= FROM 111.00 SQ.M. / 1,195.00 SQ.FT. TO 116.00 SQ.M. / 1,249.00 SQ.FT.
BALCONY AREA	= FROM 24.00 SQ.M. / 258.00 SQ.FT. TO 25.00 SQ.M. / 269.00 SQ.FT.
TOTAL NET AREA =	= FROM 136.00 SQ.M. / 1,460.00 SQ.FT. TO 140.00 SQ.M. / 1,507.00 SQ.FT.

شقة مكونة من غرفتين نوم - النموذج C

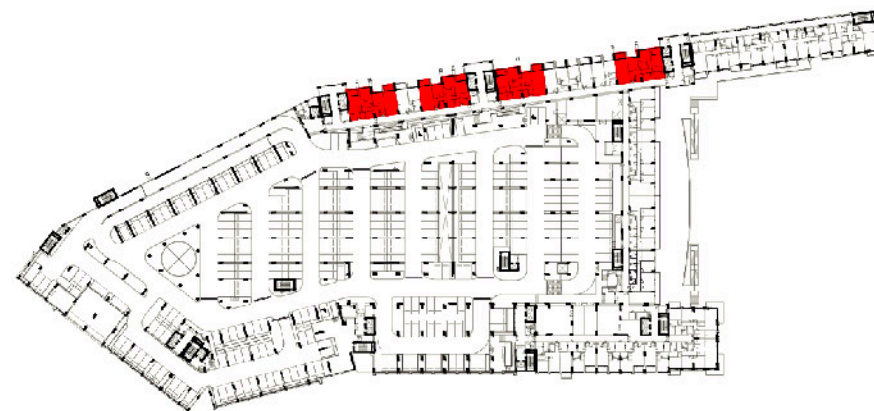


FIRST FLOOR
FLAT NO. : 149



FLAT TYPE	= 2 BEDROOM - TYPE C (R2-C)
NO. OF UNITS	= 1
FLAT AREA (W/O BALCONY)	= 106.93 SQ.M. / 1,151.00 SQ.FT.
BALCONY AREA	= 14.73 SQ.M. / 159.00 SQ.FT.
TOTAL NET AREA =	= 121.66 SQ.M. / 1,310.00 SQ.FT.

شقة مكونة من غرفتين نوم - النموذج D

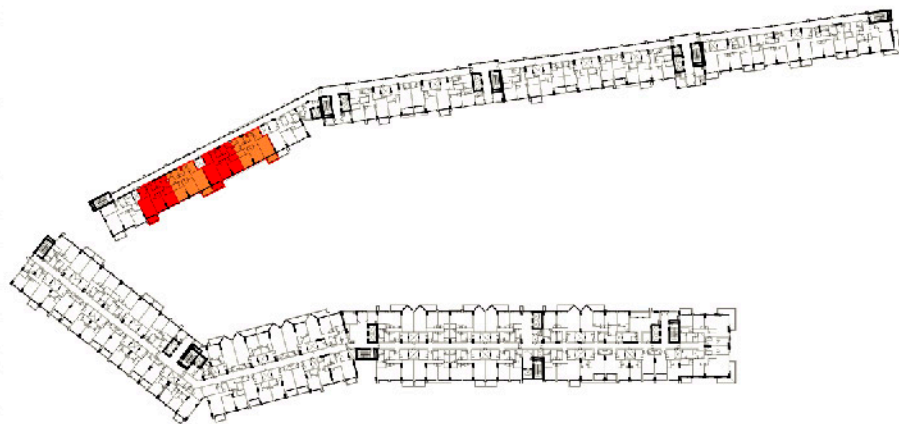


FIRST & SECOND PODIUM FLOOR
FLATS NO. : P105, P109, P110, P112, P205, P209, P210, P212

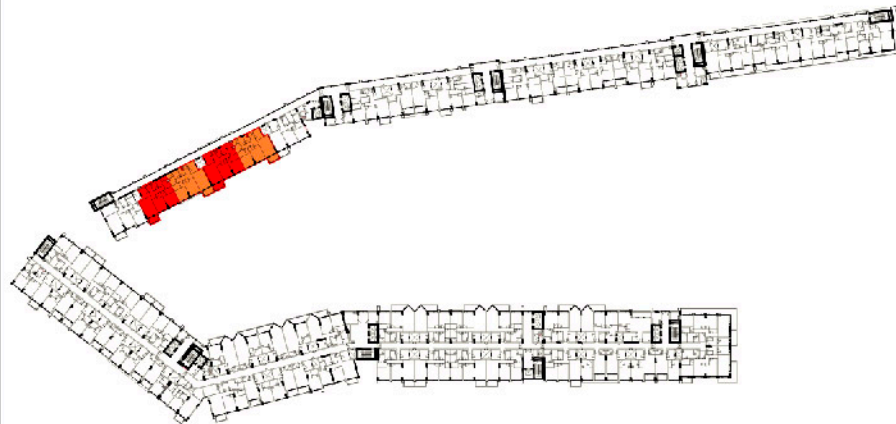


FLAT TYPE	= 2 BEDROOM - TYPE D (R2-D)
NO. OF UNITS	= 8
FLAT AREA (W/O BALCONY)	= FROM 131.00 SQ.M. / 1,410.00 SQ.FT. TO 134.00 SQ.M. / 1,442.00 SQ.FT.
BALCONY AREA	= FROM 13.00 SQ.M. / 140.00 SQ.FT. TO 15.00 SQ.M. / 162.00 SQ.FT.
TOTAL NET AREA =	= FROM 145.00 SQ.M. / 1,561.00 SQ.FT. TO 149.00 SQ.M. / 1,604.00 SQ.FT.

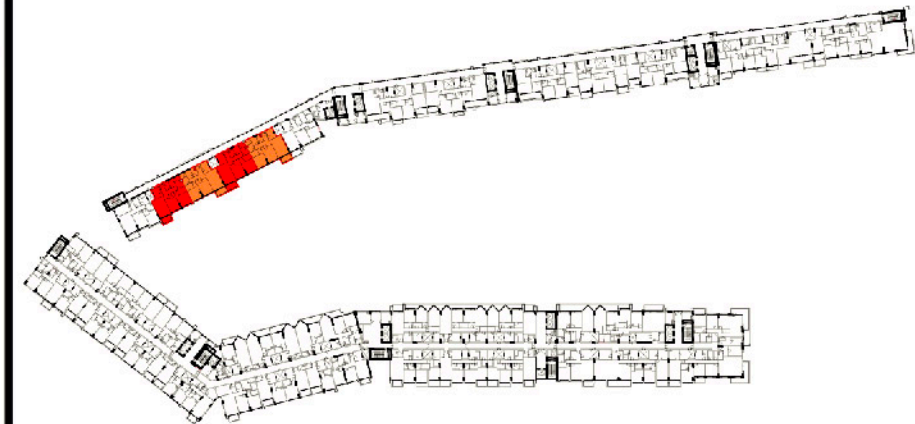
شقة مكونة من غرفتين نوم - النموذج E



TYPICAL 2ND TO 3RD & 5TH TO 8TH FLOOR
FLATS NO. : 216 TO 219, 316 TO 319, 516 TO 519, 616 TO 619, 716 TO 719, 816 TO 819



FOURTH FLOOR
FLATS NO. : 416 TO 419

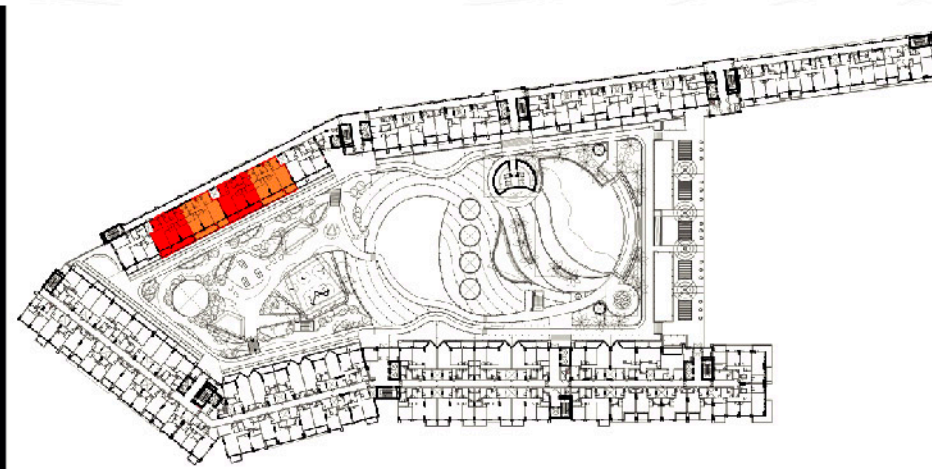


NINTH FLOOR
FLATS NO. : 909 TO 912



FLAT TYPE	= 2 BEDROOM - TYPE E (R2-E)
NO. OF UNITS	= 32
FLAT AREA (W/O BALCONY)	= FROM 107.00 SQ.M. / 1,152.70 SQ.FT. TO 110.00 SQ.M. / 1,184.00 SQ.FT.
BALCONY AREA	= FROM 7.40 SQ.M. / 80.00 SQ.FT. TO 7.60 SQ.M. / 82.00 SQ.FT.
TOTAL NET AREA =	= FROM 114.00 SQ.M. / 1,227.00 SQ.FT. TO 117.00 SQ.M. / 1,259.00 SQ.FT.

شقة مكونة من غرفتين نوم - النموذج F

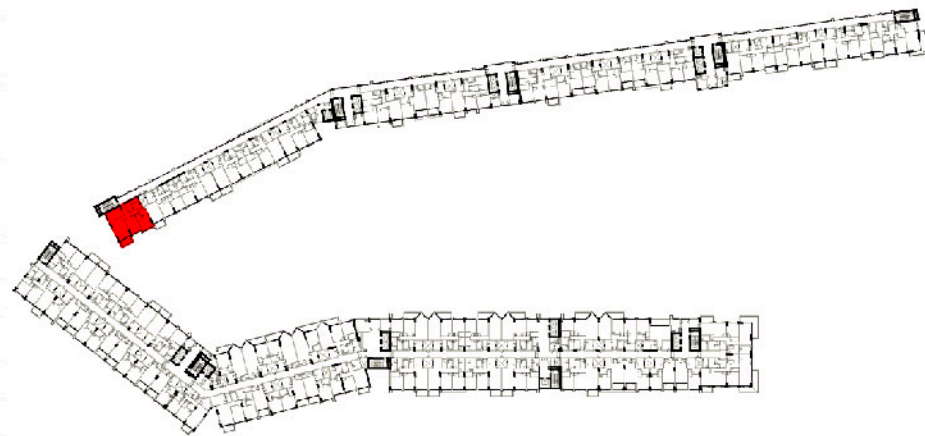


FIRST FLOOR
FLATS NO.: 116 TO 119

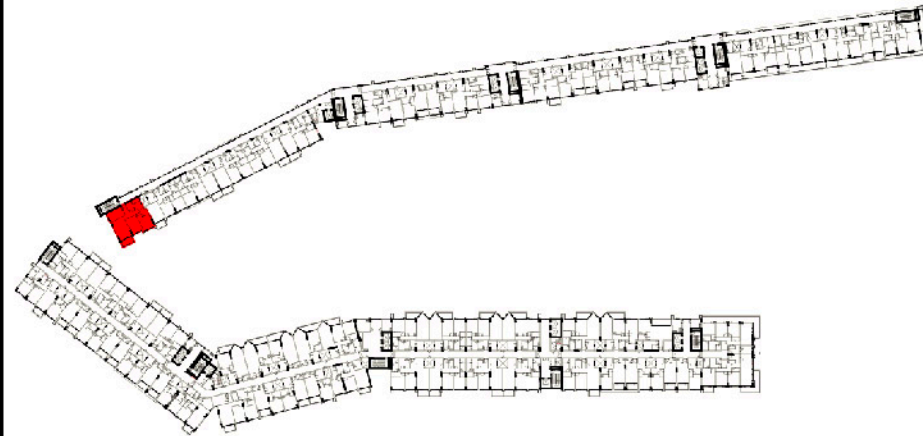


FLAT TYPE	= 2 BEDROOM - TYPE F (R2-F)
NO. OF UNITS	= 4
FLAT AREA (W/O BALCONY)	= FROM 107.00 SQ.M. / 1,150.00 SQ.FT. TO 110.00 SQ.M. / 1,184.00 SQ.FT.
BALCONY AREA	= FROM 23.00 SQ.M. / 248.00 SQ.FT. TO 24.00 SQ.M. / 258.00 SQ.FT.
TOTAL NET AREA =	= FROM 131.00 SQ.M. / 1,410.00 SQ.FT. TO 134.00 SQ.M. / 1,442.00 SQ.FT.

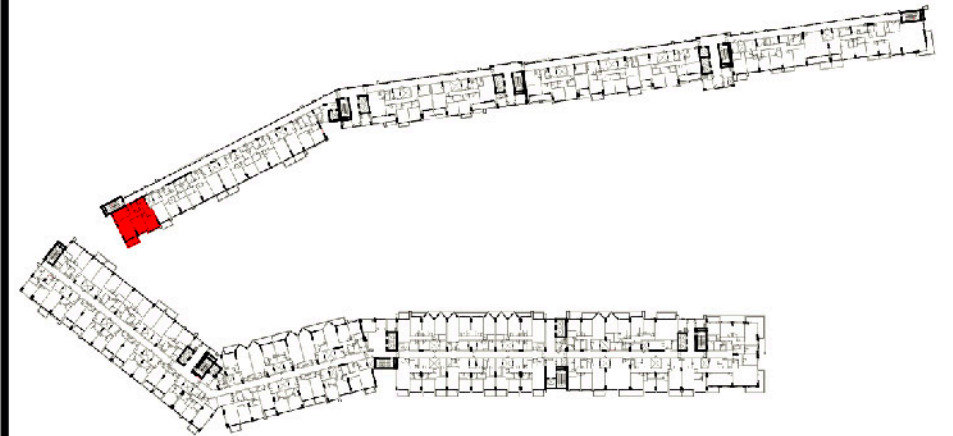
شقة مكونة من غرفتين نوم - النموذج G



TYPICAL 2ND TO 3RD & 5TH TO 8TH FLOOR
FLATS NO. : 220, 320, 520, 620, 720, 820



FOURTH FLOOR
FLAT NO. : 420

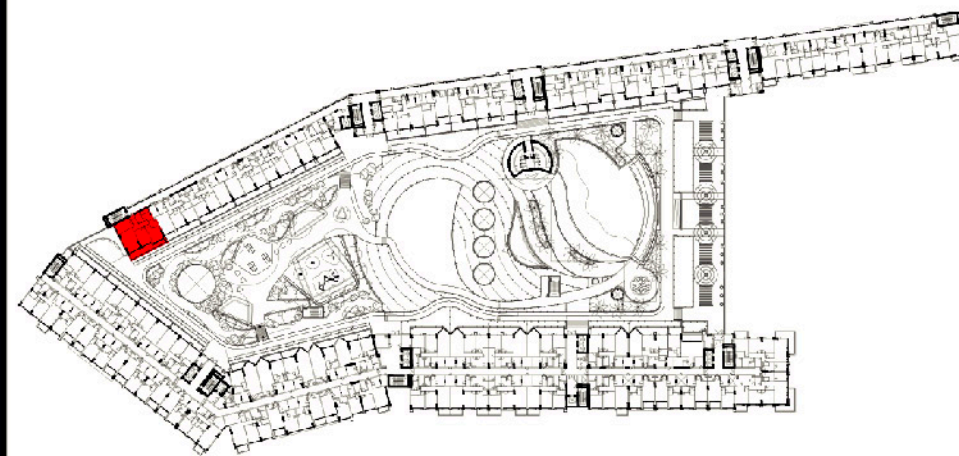


NINTH FLOOR
FLAT NO. : 913



FLAT TYPE	= 2 BEDROOM - TYPE G (R2-G)
NO. OF UNITS	= 8
FLAT AREA (W/O BALCONY)	= 119.41 SQ.M. / 1,285.00 SQ.FT.
BALCONY AREA	= 8.22 SQ.M. / 89.00 SQ.FT.
TOTAL NET AREA =	= 127.63 SQ.M. / 1,374.00 SQ.FT.

شقة مكونة من غرفتين نوم - النموذج H

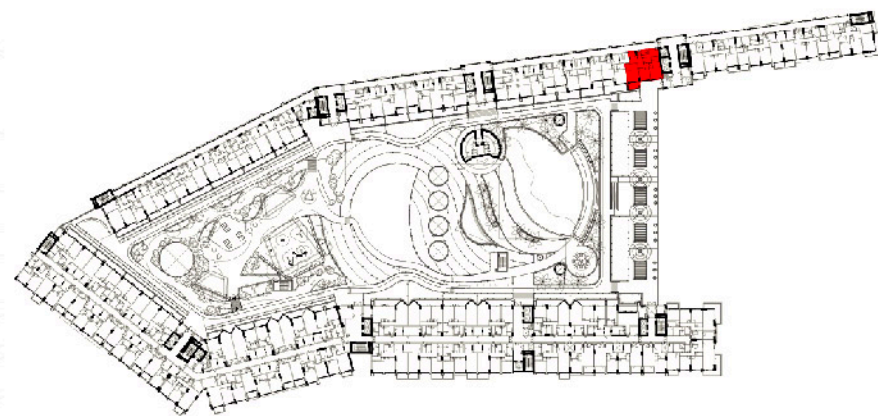


FIRST FLOOR
FLAT NO. :120

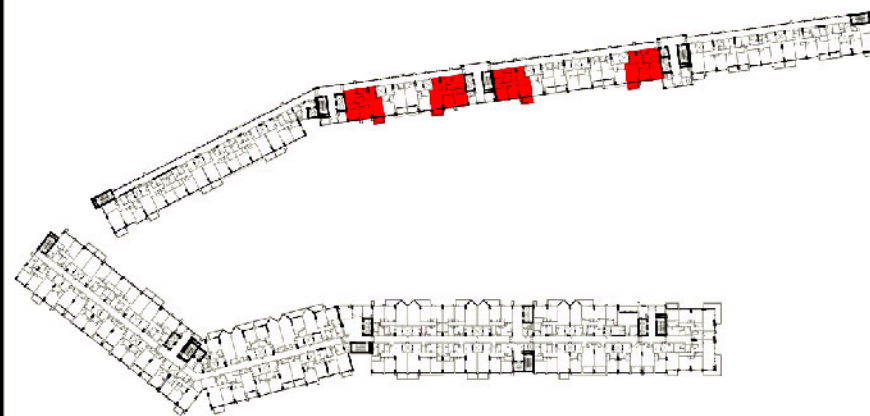


FLAT TYPE	= 2 BEDROOM - TYPE H (R2-H)
NO. OF UNITS	= 1
FLAT AREA (W/O BALCONY)	= 119.41 SQ.M. / 1,285.00 SQ.FT.
BALCONY AREA	= 21.33 SQ.M. / 230.00 SQ.FT.
TOTAL NET AREA =	= 140.74 SQ.M. / 1,515.00 SQ.FT.

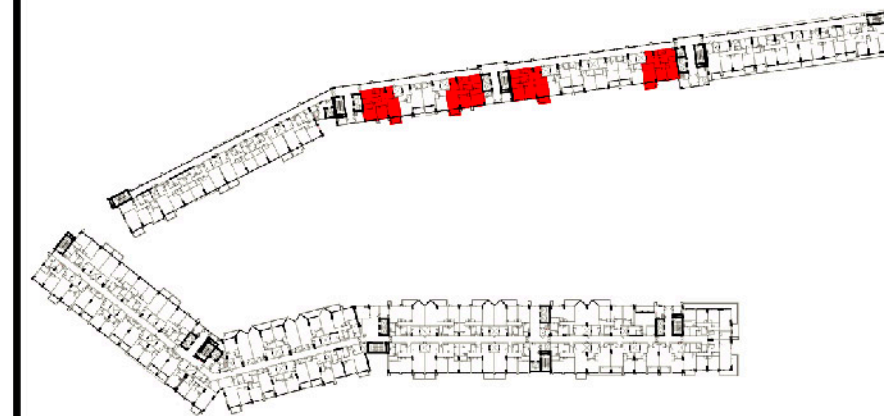
شقة مكونة من غرفتين نوم - النموذج I



FIRST FLOOR
FLAT NO. :105



TYPICAL 2ND TO 3RD & 5TH TO 8TH FLOOR
FLATS NO. : 205, 210, 211, 214, 305, 310, 311, 314, 505, 510, 511, 514, 605, 610, 611, 614, 705, 710, 711, 714, 805, 810, 811, 814

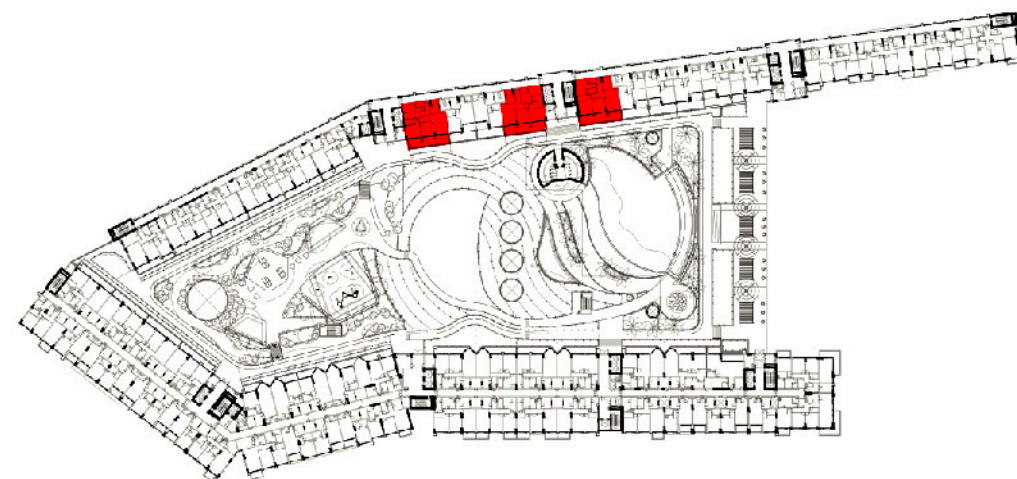


FOURTH FLOOR
FLATS NO. :405, 410, 411, 414



FLAT TYPE	= 2 BEDROOM - TYPE I (R2-I)
NO. OF UNITS	= 29
FLAT AREA (W/O BALCONY)	= FROM 108.00 SQ.M. / 1,163.00 SQ.FT. TO 113.00 SQ.M. / 1,216.00 SQ.FT.
BALCONY AREA	= FROM 7.30 SQ.M. / 79.00 SQ.FT. TO 7.60 SQ.M. / 82.00 SQ.FT.
TOTAL NET AREA =	= FROM 116.00 SQ.M. / 1,249.00 SQ.FT. TO 121.00 SQ.M. / 1,302.00 SQ.FT.

شقة مكونة من غرفتين نوم - النموذج J

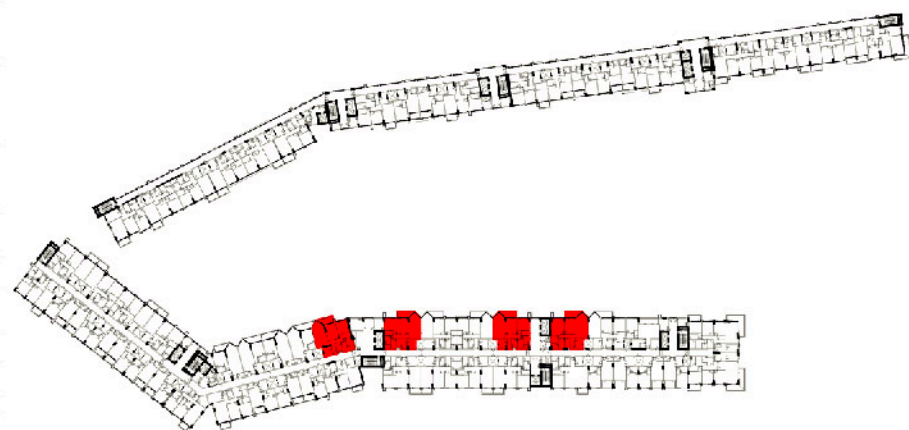


FIRST FLOOR
FLATS NO. :110, 111, 114

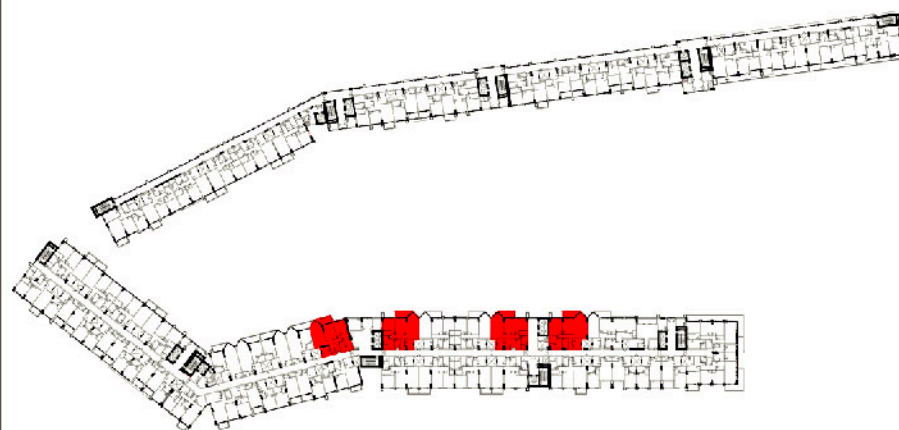


FLAT TYPE	= 2 BEDROOM - TYPE J (R2-J)
NO. OF UNITS	= 3
FLAT AREA (W/O BALCONY)	= FROM 112.00 SQ.M. / 1,206.00 SQ.FT. TO 113.00 SQ.M. / 1,216.00 SQ.FT.
BALCONY AREA	= FROM 31.00 SQ.M. / 334.00 SQ.FT. TO 33.00 SQ.M. / 355.00 SQ.FT.
TOTAL NET AREA =	= FROM 144.00 SQ.M. / 1,550.00 SQ.FT. TO 145.00 SQ.M. / 1,561.00 SQ.FT.

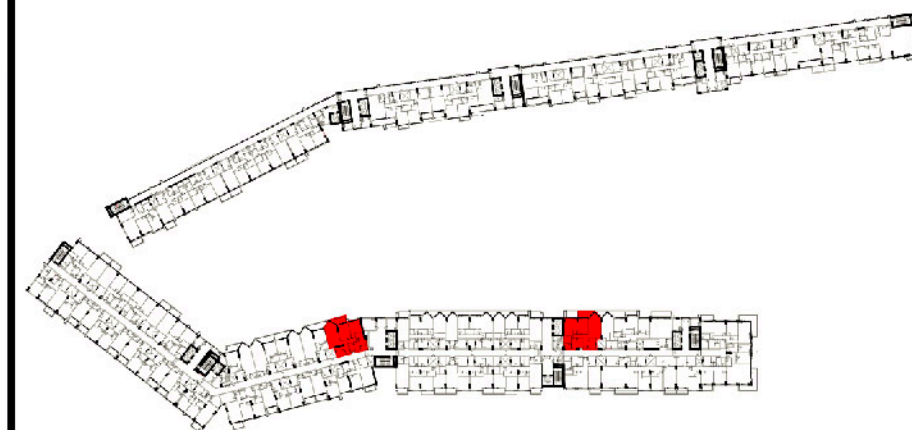
شقة مكونة من غرفتين نوم - النموذج K



TYPICAL 2ND TO 3RD & 5TH TO 8TH FLOOR
FLATS NO. : 237, 243, 246, 251, 337, 343, 346, 351, 537, 543, 546, 551, 637, 643, 646, 651, 737, 743, 746, 751, 837, 843, 846, 851



FOURTH FLOOR
FLATS NO. : 437, 443, 446, 451

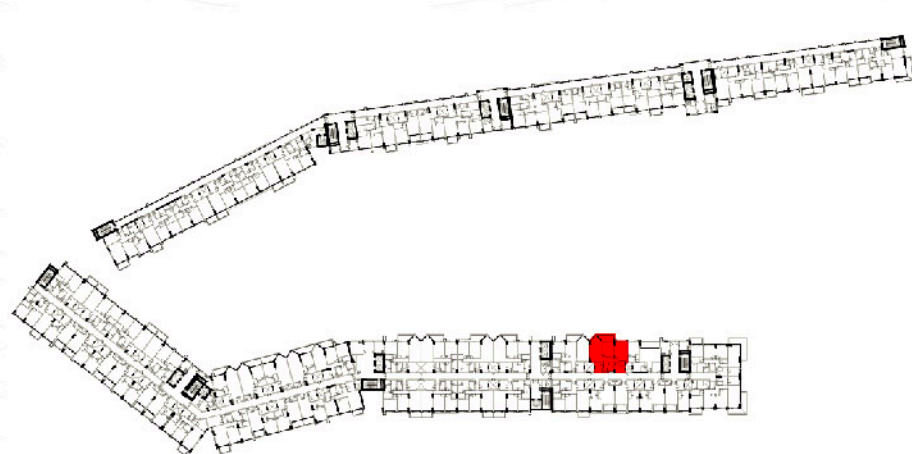


NINTH FLOOR
FLATS NO. : 930, 942

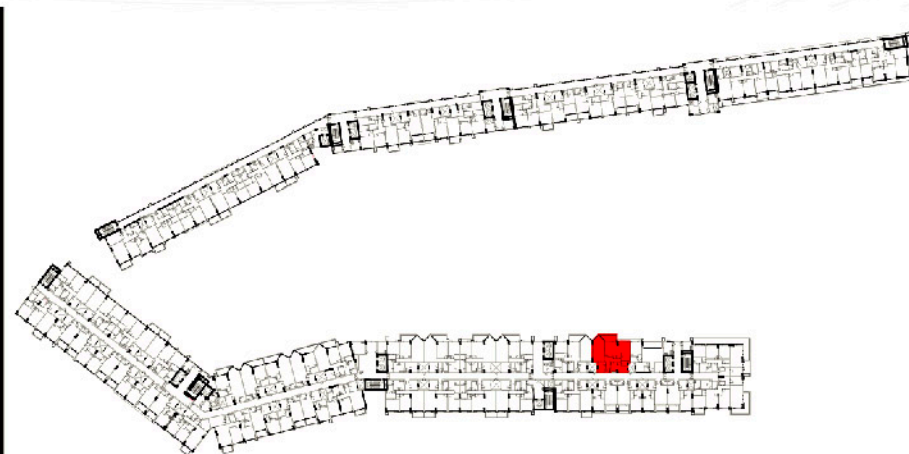


FLAT TYPE	= 2 BEDROOM - TYPE K (R2-K)
NO. OF UNITS	= 30
FLAT AREA (W/O BALCONY)	= FROM 112.00 SQ.M. / 1,206.00 SQ.FT. TO 116.00 SQ.M. / 1,249.00 SQ.FT.
BALCONY AREA	= FROM 8.00 SQ.M. / 86.00 SQ.FT. TO 9.00 SQ.M. / 97.00 SQ.FT.
TOTAL NET AREA =	= FROM 121.00 SQ.M. / 1,302.00 SQ.FT. TO 125.00 SQ.M. / 1,346.00 SQ.FT.

شقة مكونة من غرفتين نوم - النموذج M



TYPICAL 2ND TO 3RD & 5TH TO 8TH FLOOR
FLATS NO. : 252, 352, 552, 652, 752, 852

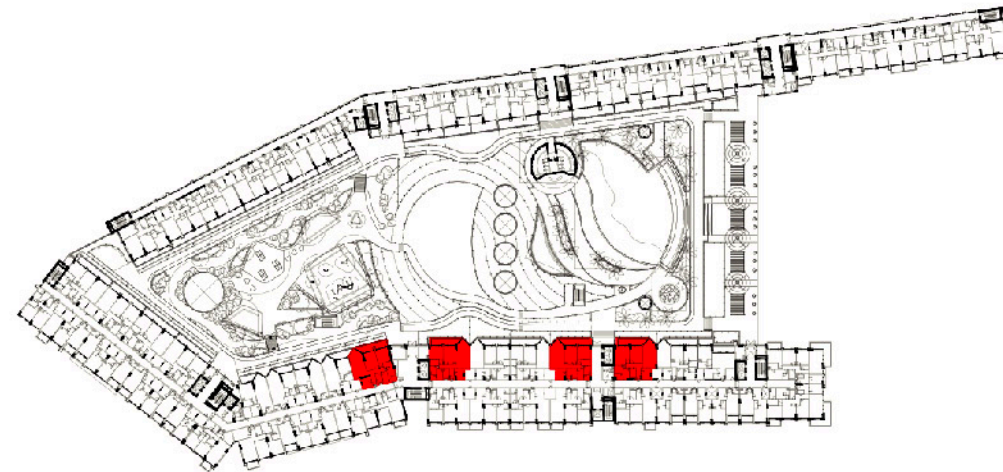


FOURTH FLOOR
FLAT NO. : 452



FLAT TYPE	= 2 BEDROOM - TYPE M (R2-M)
NO. OF UNITS	= 7
FLAT AREA (W/O BALCONY)	= 113.12 SQ.M. / 1,216.00 SQ.FT.
BALCONY AREA	= 9.76 SQ.M. / 105.00 SQ.FT.
TOTAL NET AREA =	= 122.88 SQ.M. / 1,323.00 SQ.FT.

شقة مكونة من غرفتين نوم - النموذج N

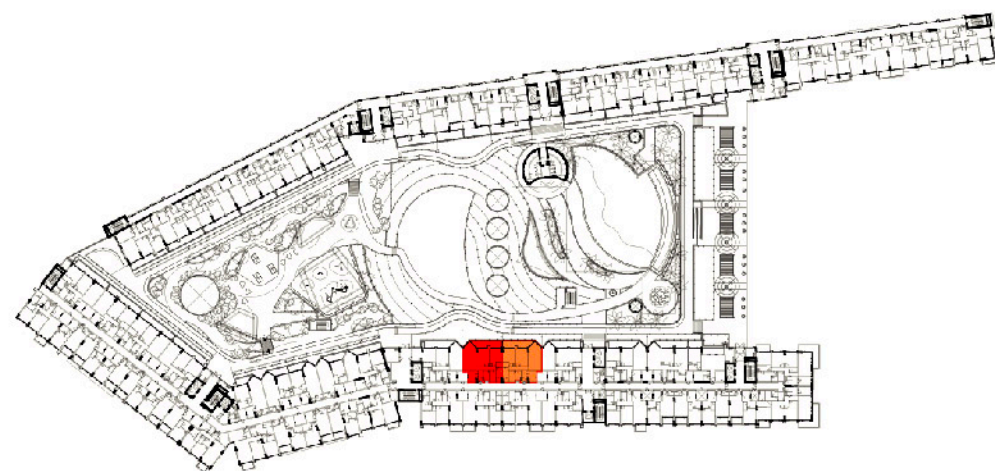


FIRST FLOOR
FLATS NO. : 137, 143, 146, 151



FLAT TYPE	= 2 BEDROOM - TYPE N (R2-N)
NO. OF UNITS	= 4
FLAT AREA (W/O BALCONY)	= FROM 112.00 SQ.M. / 1,206.00 SQ.FT. TO 116.00 SQ.M. / 1,249.00 SQ.FT.
BALCONY AREA	= FROM 16.00 SQ.M. / 172.00 SQ.FT. TO 18.00 SQ.M. / 194.00 SQ.FT.
TOTAL NET AREA =	= FROM 129.00 SQ.M. / 1,389.00 SQ.FT. TO 133.00 SQ.M. / 1,432.00 SQ.FT.

شقة مكونة من غرفتين نوم - النموذج ○

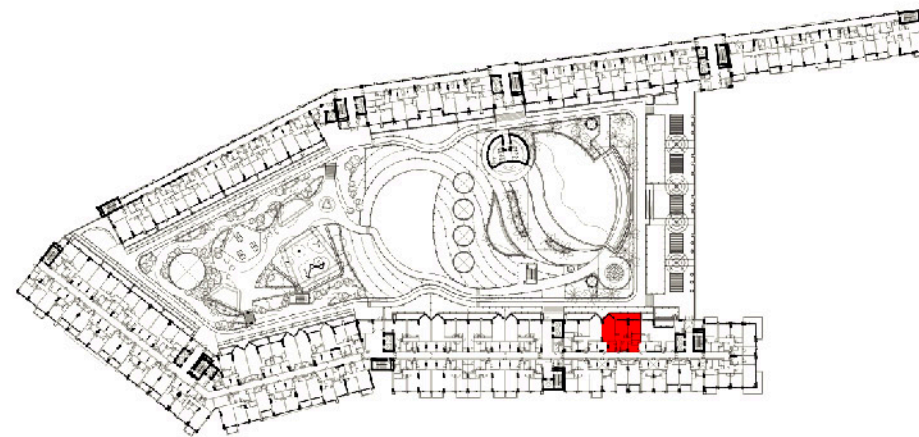


FIRST FLOOR
FLATS NO. : 144, 145



FLAT TYPE	= 2 BEDROOM - TYPE O (R2-O)
NO. OF UNITS	= 2
FLAT AREA (W/O BALCONY)	= 111.20 SQ.M. / 1,197.00 SQ.FT.
BALCONY AREA	= 16.70 SQ.M. / 180.00 SQ.FT.
TOTAL NET AREA =	= 127.90 SQ.M. / 1,377.00 SQ.FT.

شقة مكونة من غرفتين نوم - النموذج P

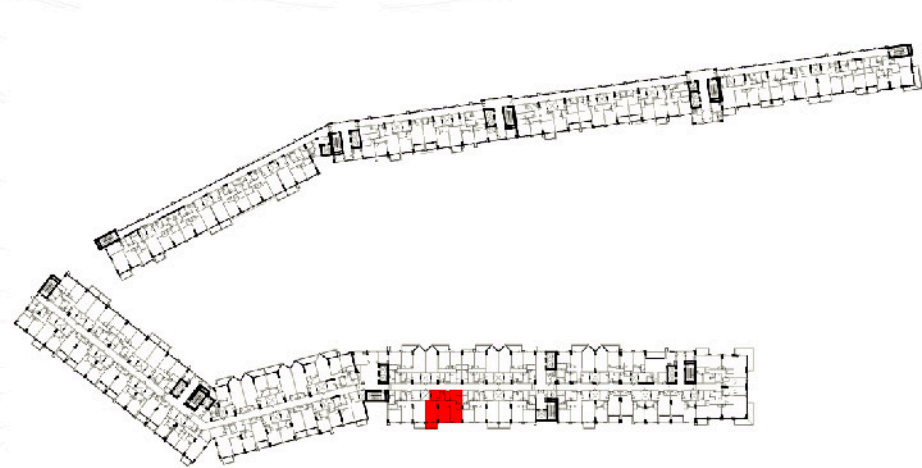


FIRST FLOOR
FLAT NO. : 152

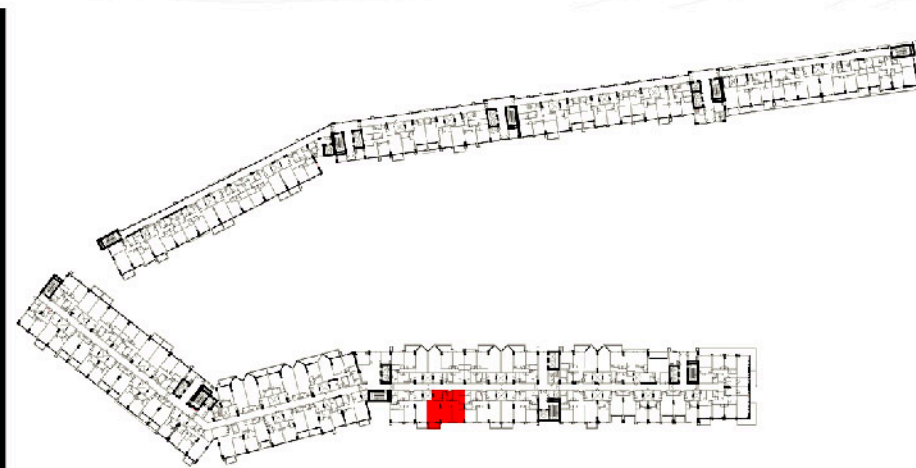


FLAT TYPE	= 2 BEDROOM - TYPE P (R2-P)
NO. OF UNITS	= 1
FLAT AREA (W/O BALCONY)	= 113.12 SQ.M. / 1,218.00 SQ.FT.
BALCONY AREA	= 17.97 SQ.M. / 193.00 SQ.FT.
TOTAL NET AREA =	= 131.09 SQ.M. / 1,411.00 SQ.FT.

شقة مكونة من غرفتين نوم - النموذج Q



TYPICAL 2ND TO 3RD & 5TH TO 8TH FLOOR
FLATS NO. : 248, 348, 548, 648, 748, 848

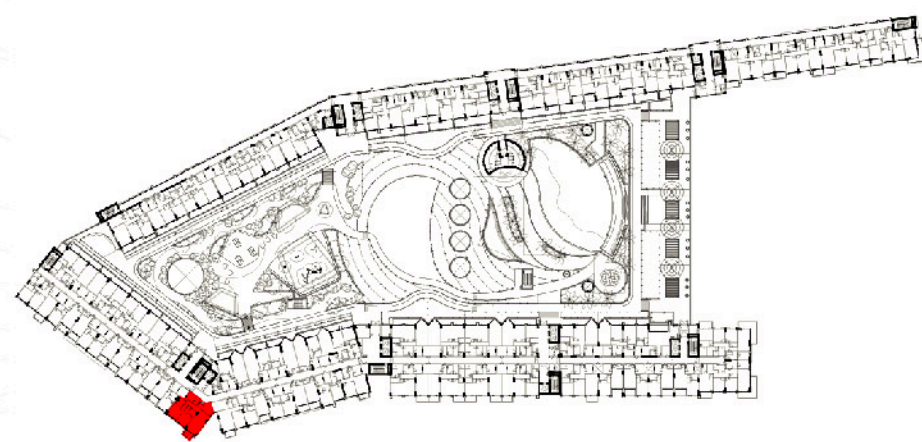


FOURTH FLOOR
FLAT NO. : 448

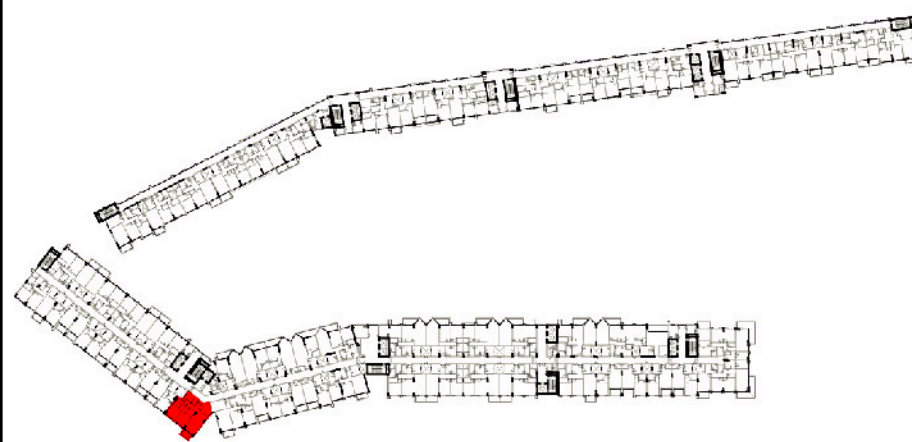


FLAT TYPE	= 2 BEDROOM - TYPE Q (R2-Q)
NO. OF UNITS	= 7
FLAT AREA (W/O BALCONY)	= 107.38 SQ.M. / 1,156.00 SQ.FT.
BALCONY AREA	= 7.47 SQ.M. / 80.00 SQ.FT.
TOTAL NET AREA =	= 114.85 SQ.M. / 1,236.00 SQ.FT.

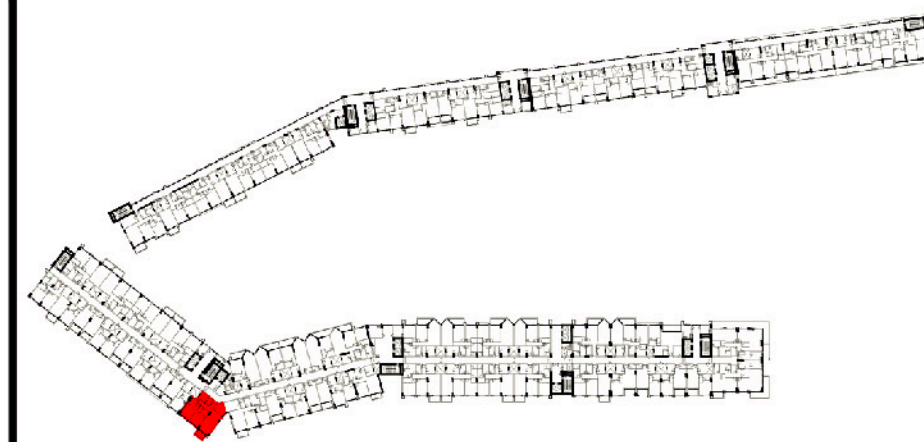
شقة مكونة من غرفتين نوم - النموذج R



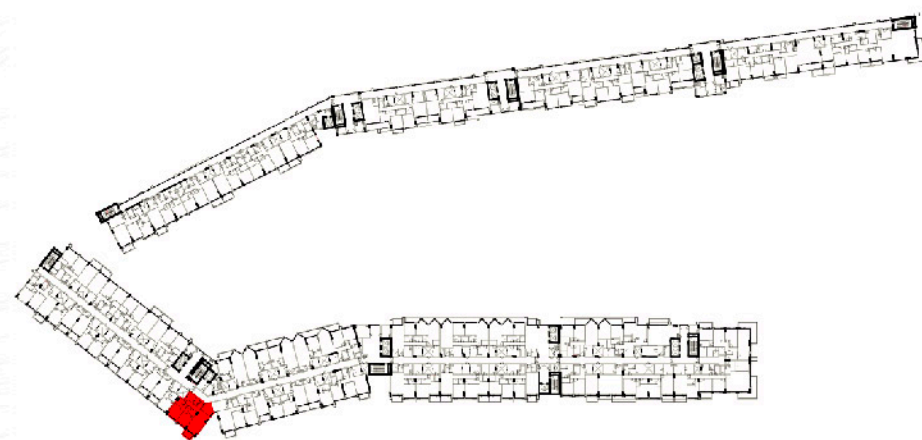
FIRST FLOOR
FLAT NO. : 132



TYPICAL 2ND TO 3RD & 5TH TO 8TH FLOOR
FLATS NO. : 232, 332, 532, 632, 732, 832



FOURTH FLOOR
FLAT NO. : 432

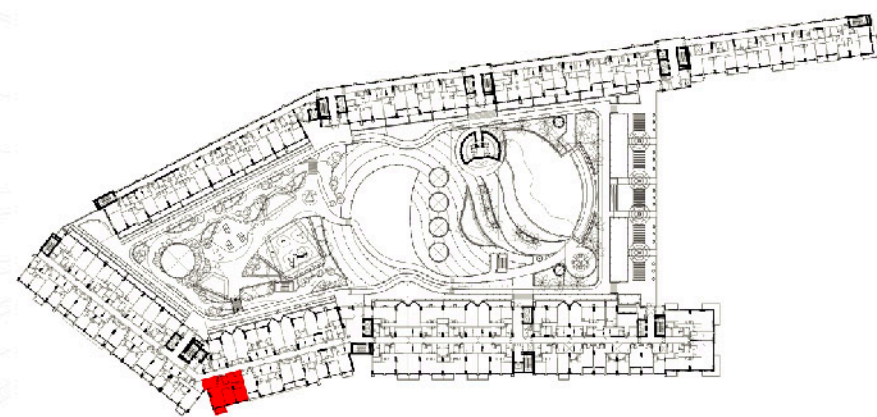


NINTH FLOOR
FLAT NO. : 925

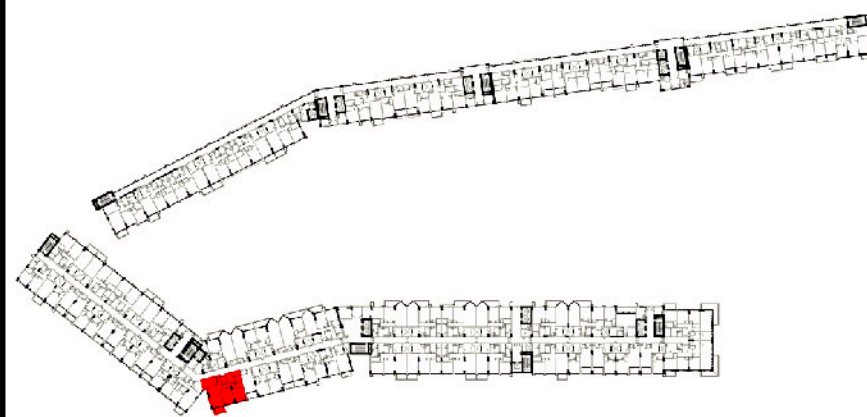


FLAT TYPE	= 2 BEDROOM - TYPE R (R2-R)
NO. OF UNITS	= 9
FLAT AREA (W/O BALCONY)	= 109.69 SQ.M. / 1,181.00 SQ.FT.
BALCONY AREA	= 6.46 SQ.M. / 69.00 SQ.FT.
TOTAL NET AREA =	= 116.15 SQ.M. / 1,250.00 SQ.FT.

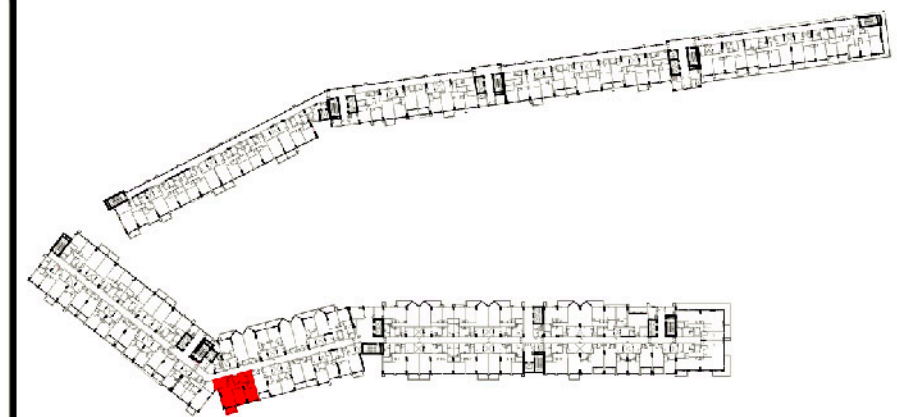
شقة مكونة من غرفتين نوم - النموذج S



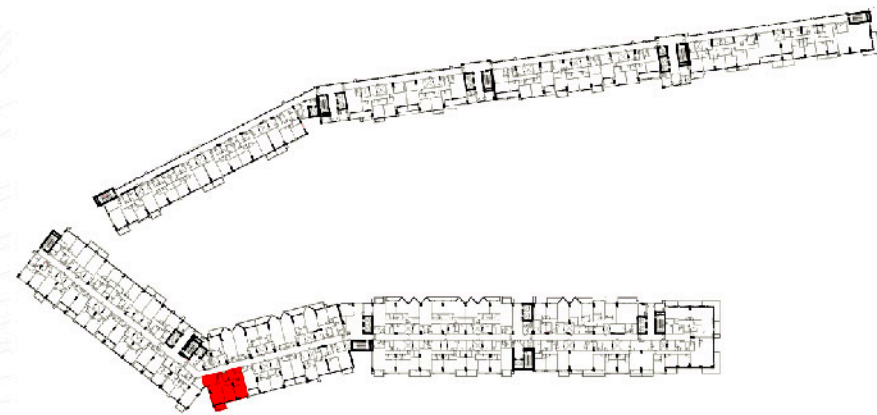
FIRST FLOOR
FLAT NO. : 138



TYPICAL 2ND TO 3RD & 5TH TO 8TH FLOOR
FLATS NO. : 238, 338, 538, 638, 738, 838



FOURTH FLOOR
FLAT NO. : 438

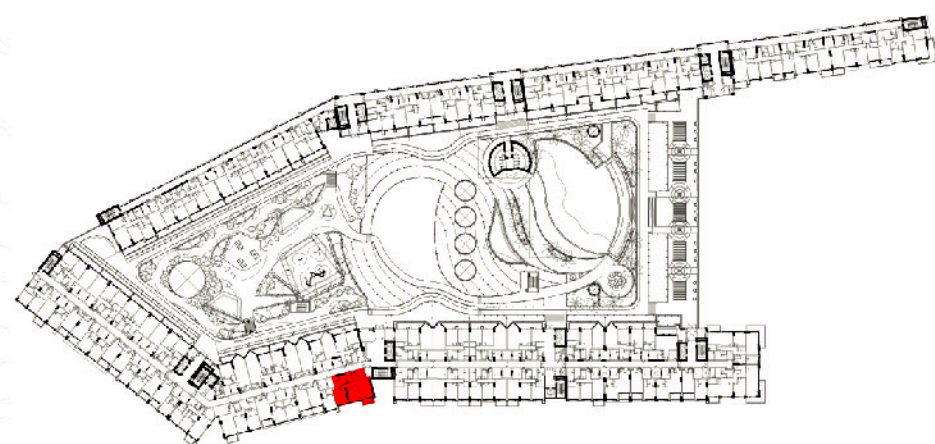


NINTH FLOOR
FLAT NO. : 931

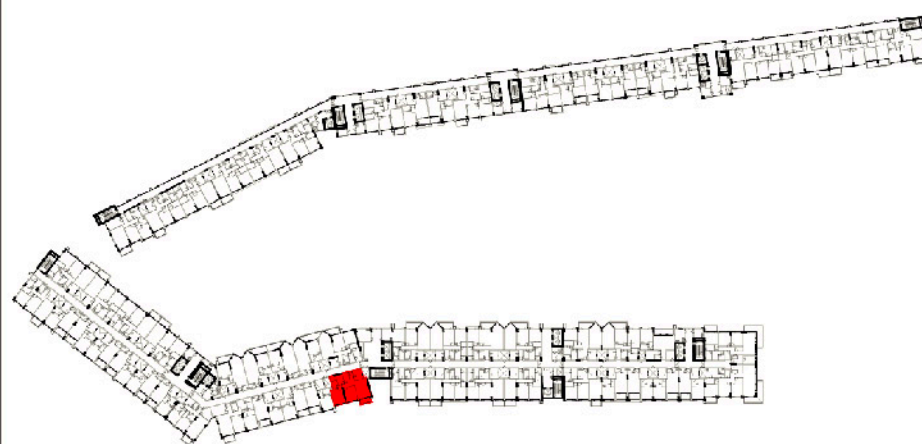


FLAT TYPE	= 2 BEDROOM - TYPE S (R2-S)
NO. OF UNITS	= 9
FLAT AREA (W/O BALCONY)	= 120.90 SQ.M. / 1,301.00 SQ.FT.
BALCONY AREA	= 7.28 SQ.M. / 78.00 SQ.FT.
TOTAL NET AREA =	= 128.18 SQ.M. / 1,379.00 SQ.FT.

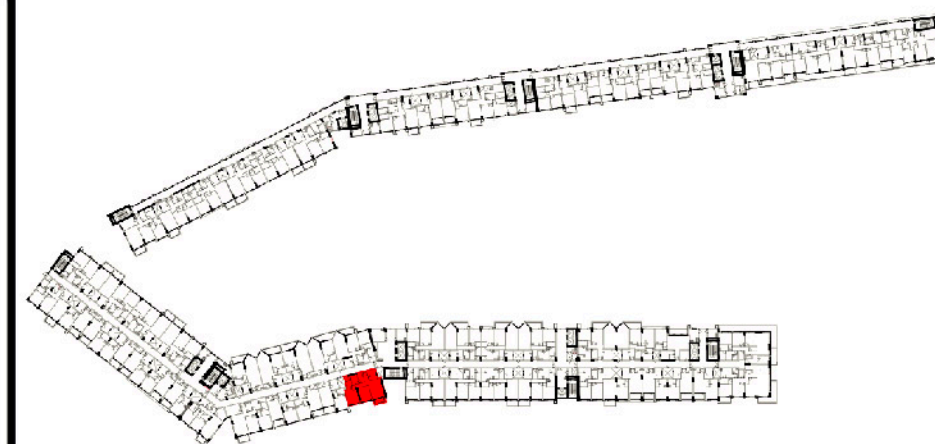
شقة مكونه من غرفتين نوم - النموذج T



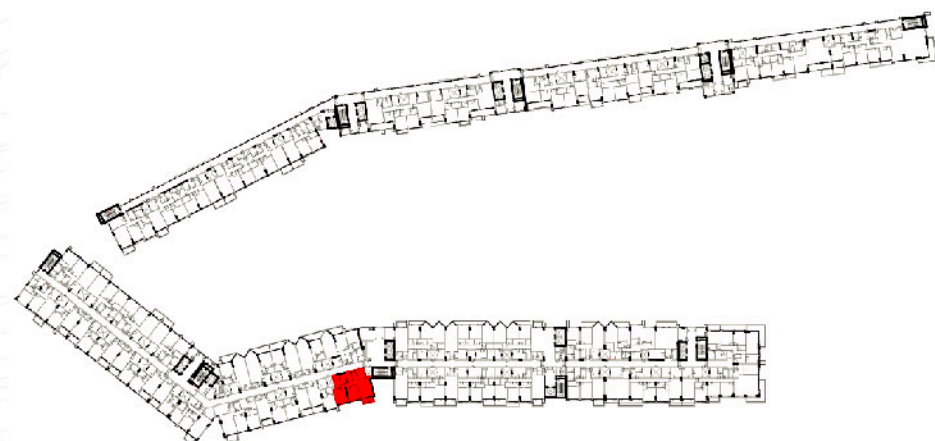
FIRST FLOOR
FLAT NO. : 142



TYPICAL 2ND TO 3RD & 5TH TO 8TH FLOOR
FLATS NO. : 242, 342, 542, 642, 742, 842



FOURTH FLOOR
FLAT NO. : 442

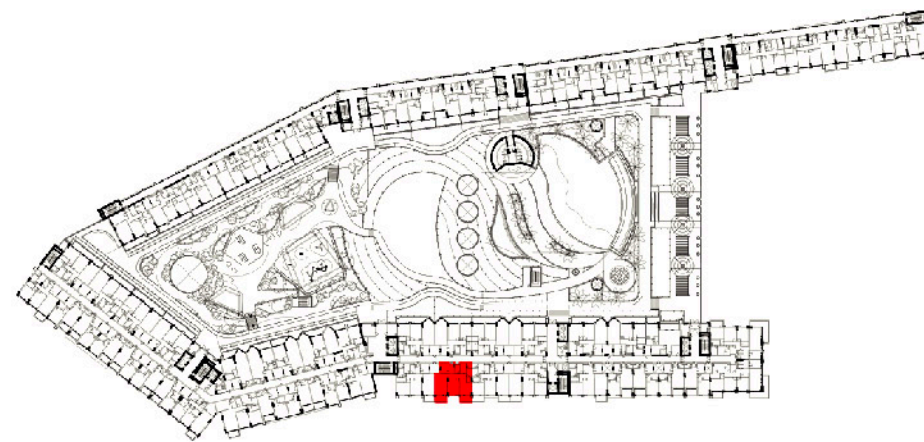


NINTH FLOOR
FLAT NO. : 935



FLAT TYPE	= 2 BEDROOM - TYPE T (R2-T)
NO. OF UNITS	= 9
FLAT AREA (W/O BALCONY)	= 102.96 SQ.M. / 1,108.00 SQ.FT.
BALCONY AREA	= 5.84 SQ.M. / 63.00 SQ.FT.
TOTAL NET AREA =	= 108.80 SQ.M. / 1,171.00 SQ.FT.

شقة مكونة من غرفتين نوم - النموذج U

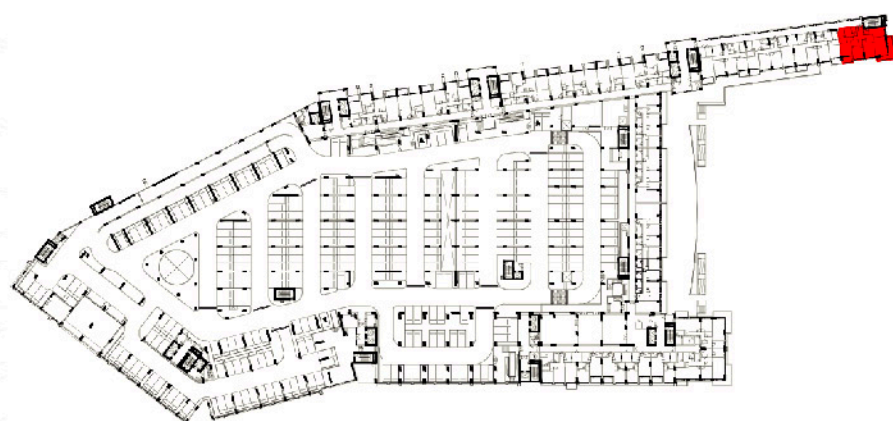


FIRST FLOOR
FLAT NO. : 148

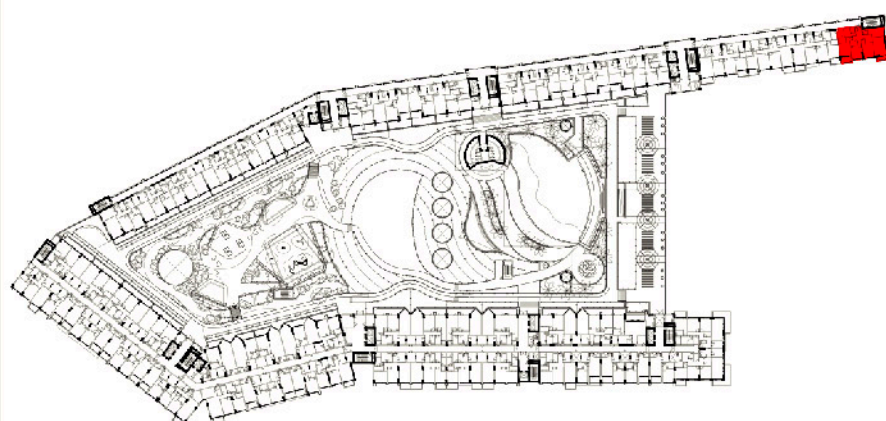


FLAT TYPE	= 2 BEDROOM - TYPE U (R2-U)
NO. OF UNITS	= 1
FLAT AREA (W/O BALCONY)	= 107.38 SQ.M. / 1,156.00 SQ.FT.
BALCONY AREA	= 14.94 SQ.M. / 161.00 SQ.FT.
TOTAL NET AREA =	= 122.32 SQ.M. / 1,317.00 SQ.FT.

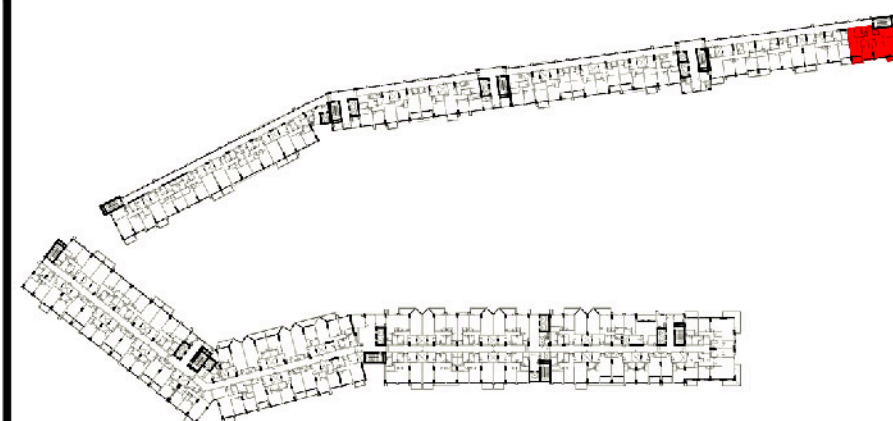
شقة مكونة من ثلاث غرف نوم - النموذج A



FIRST & SECOND PODIUM FLOOR
FLATS NO. : P101 & P201



FIRST FLOOR
FLAT NO. : 101

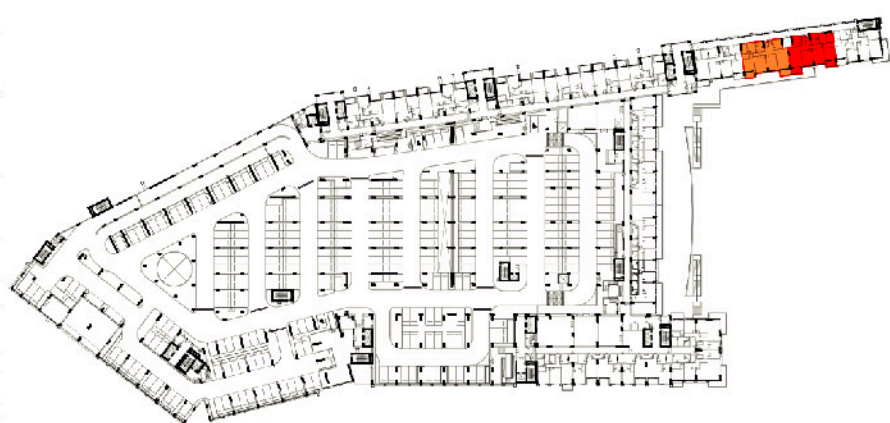


TYPICAL 2ND TO 3RD & 5TH TO 8TH FLOOR
FLATS NO. : 201, 301, 501, 601, 701, 801

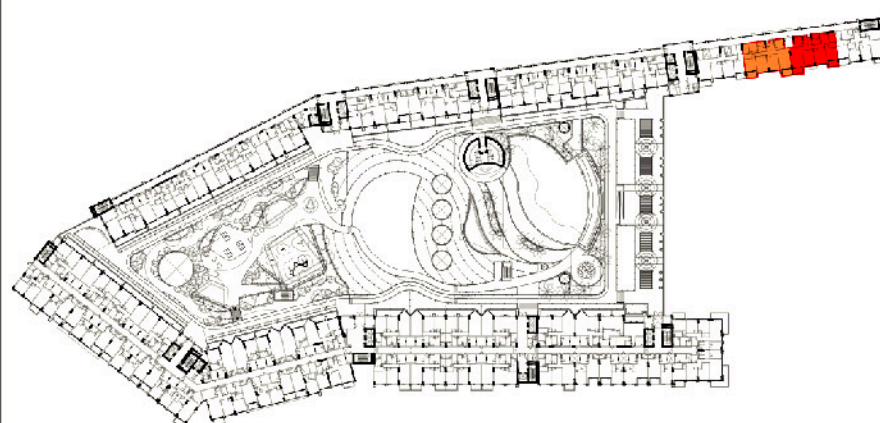


FLAT TYPE	= 3 BEDROOM - TYPE A (R3-A)
NO. OF UNITS	= 9
FLAT AREA (W/O BALCONY)	= 147.40 SQ.M. / 1,587.00 SQ.FT.
BALCONY AREA	= 26.97 SQ.M. / 290.00 SQ.FT.
TOTAL NET AREA =	= 174.37 SQ.M. / 1,877.00 SQ.FT.

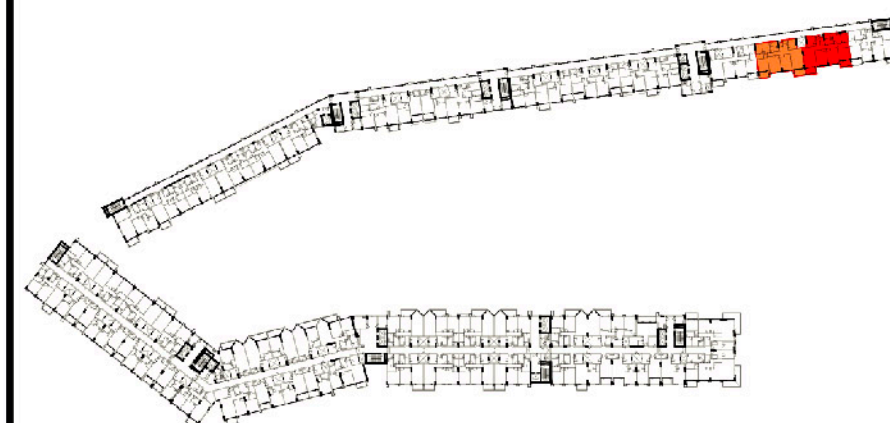
شقة مكونة من ثلاث غرفة نوم - النموذج B



FIRST & SECOND PODIUM FLOOR
FLATS NO. : P102, P103, P202, P203



FIRST FLOOR
FLATS NO. : 102, 103

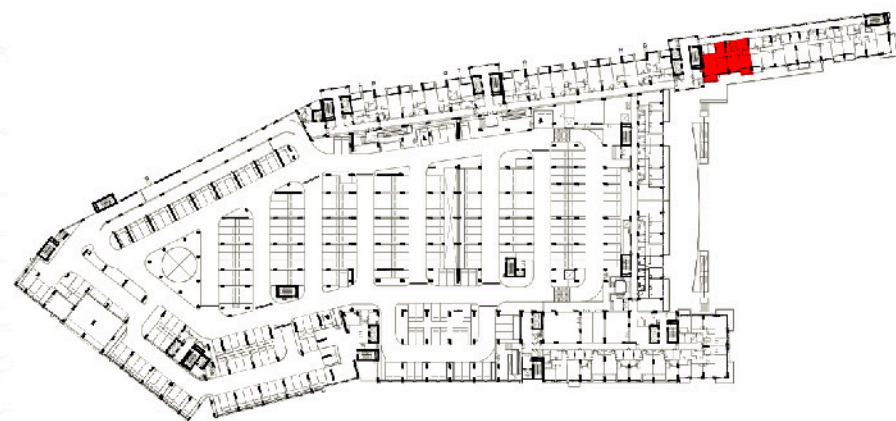


TYPICAL 2ND TO 3RD & 5TH TO 8TH FLOOR
FLATS NO. : 202, 203, 302, 303, 502, 503, 602, 603, 702, 703, 802, 803

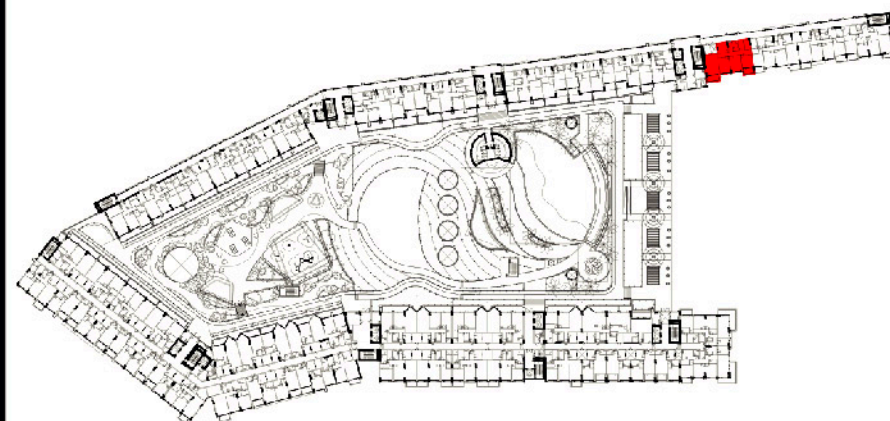


FLAT TYPE	= 3 BEDROOM - TYPE B (R3-B)
NO. OF UNITS	= 18
FLAT AREA (W/O BALCONY)	= FROM 139.00 SQ.M. / 1,496.00 SQ.FT. TO = 141.00 SQ.M. / 1,518.00 SQ.FT.
BALCONY AREA	= FROM 14.10 SQ.M. / 152.00 SQ.FT. TO = 14.20 SQ.M. / 153.00 SQ.FT.
TOTAL NET AREA =	= FROM 154.00 SQ.M. / 1,658.00 SQ.FT. TO = 155.00 SQ.M. / 1,668.00 SQ.FT.

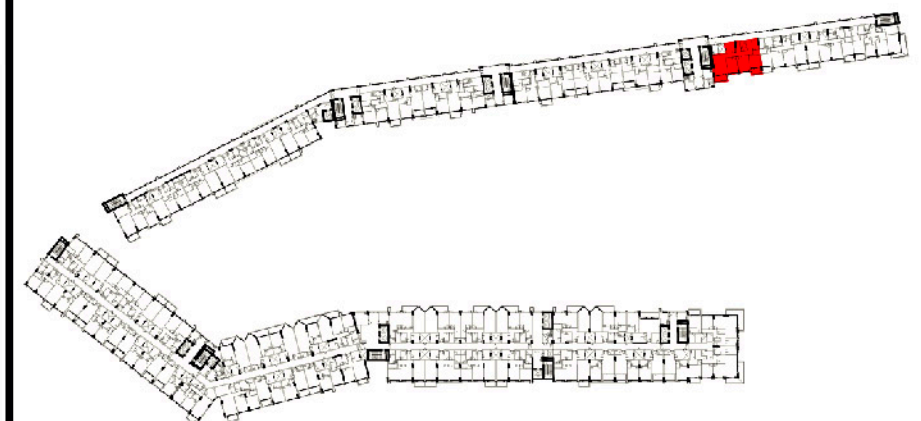
شقة مكونة من ثلاث غرف نوم - النموذج C



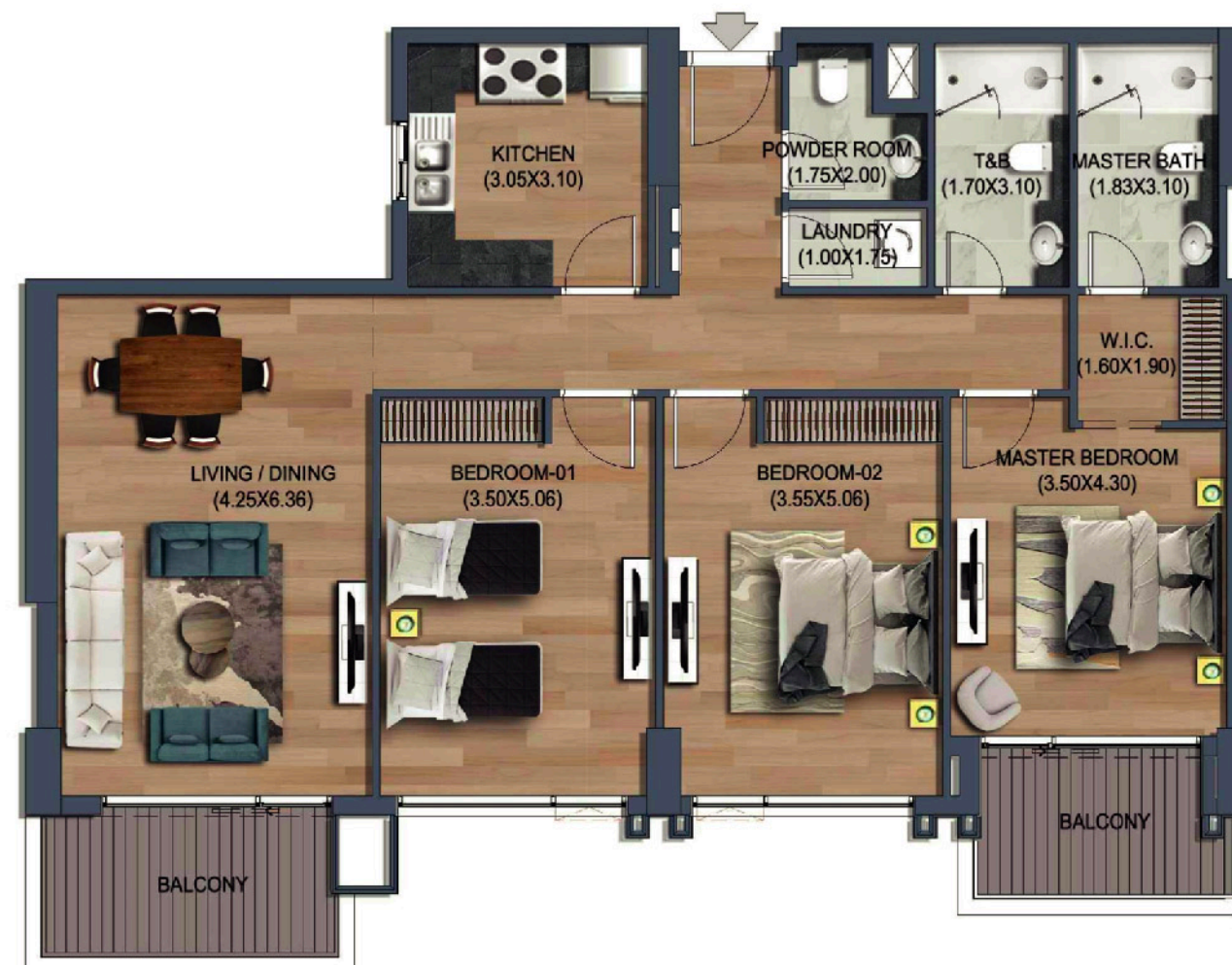
FIRST & SECOND PODIUM FLOOR
FLATS NO. : P104 & P204



FIRST FLOOR
FLAT NO. : 104

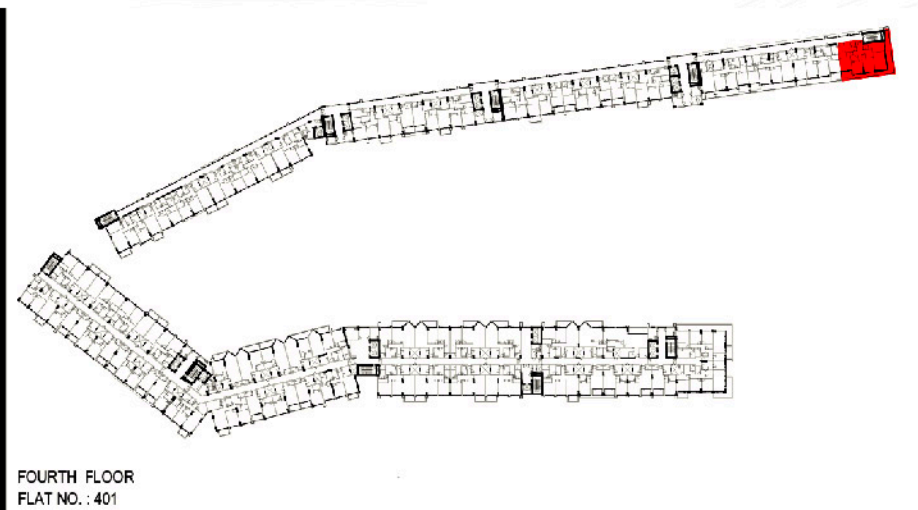


TYPICAL 2ND TO 3RD & 5TH TO 8TH FLOOR
FLATS NO. : 204, 304, 504, 604, 704, 804



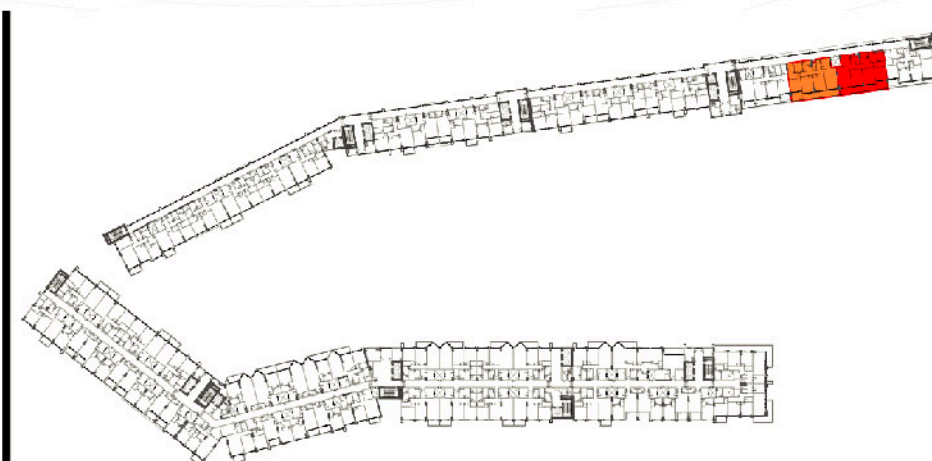
FLAT TYPE	= 3 BEDROOM - TYPE C (R3-C)
NO. OF UNITS	= 9
FLAT AREA (W/O BALCONY)	= 136.59 SQ.M. / 1,470.00 SQ.FT.
BALCONY AREA	= 15.45 SQ.M. / 166.00 SQ.FT.
TOTAL NET AREA =	= 152.04 SQ.M. / 1,637.00 SQ.FT.

شقة مكونه من ثلاث غرفة نوم - النموذج D

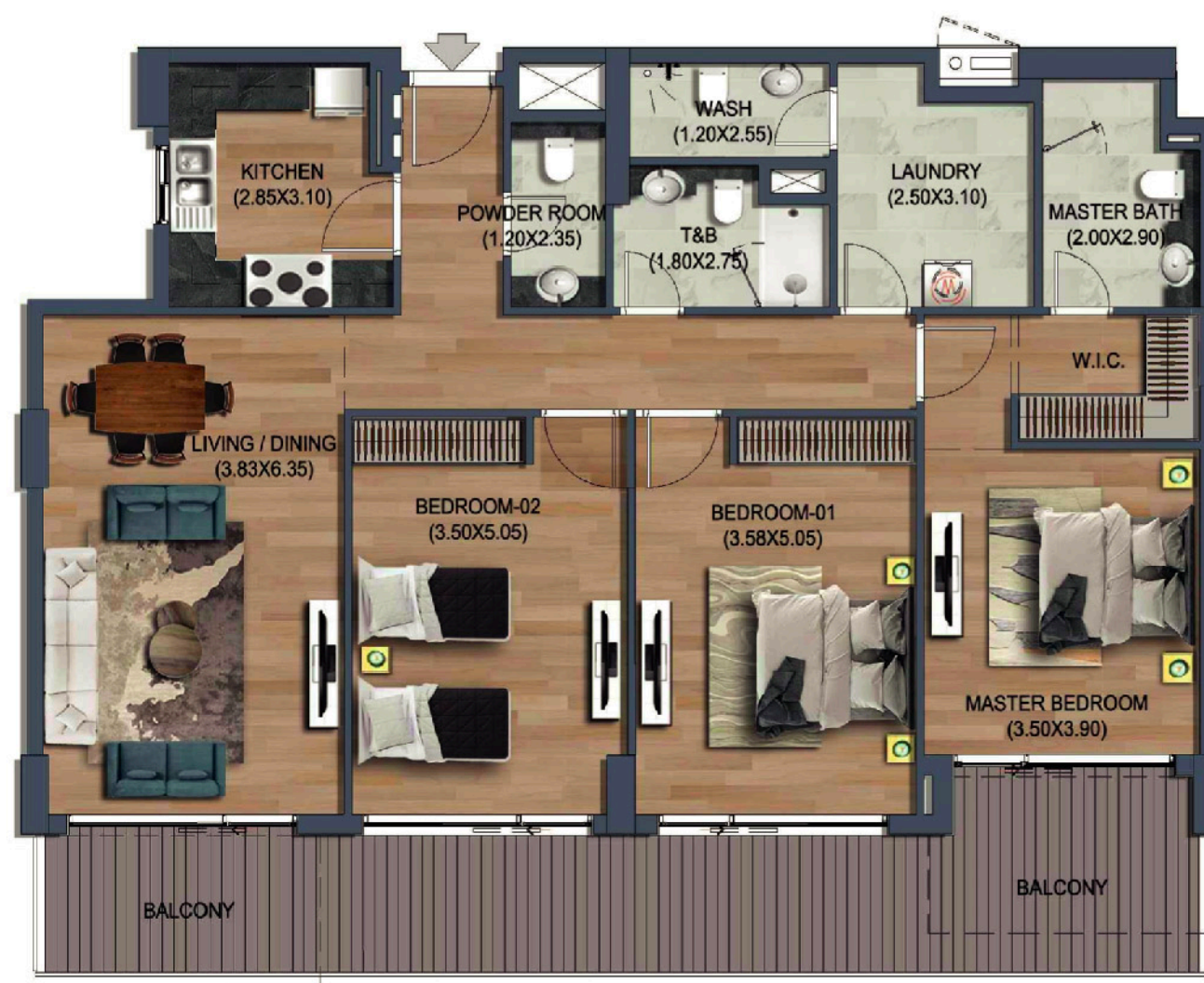


FLAT TYPE	= 3 BEDROOM - TYPE D (R3-D)
NO. OF UNITS	= 1
FLAT AREA (W/O BALCONY)	= 147.40 SQ.M. / 1,587.00 SQ.FT.
BALCONY AREA	= 52.91 SQ.M. / 570.00 SQ.FT.
TOTAL NET AREA =	= 200.31 SQ.M. / 2,156.00 SQ.FT.

شقة مكونه من ثلاث غرفة نوم - النموذج E

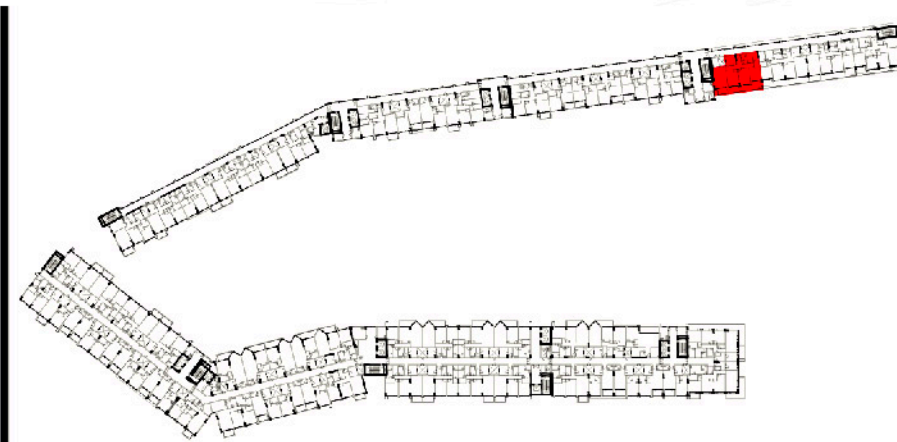


FOURTH FLOOR
FLATS NO. : 402, 403

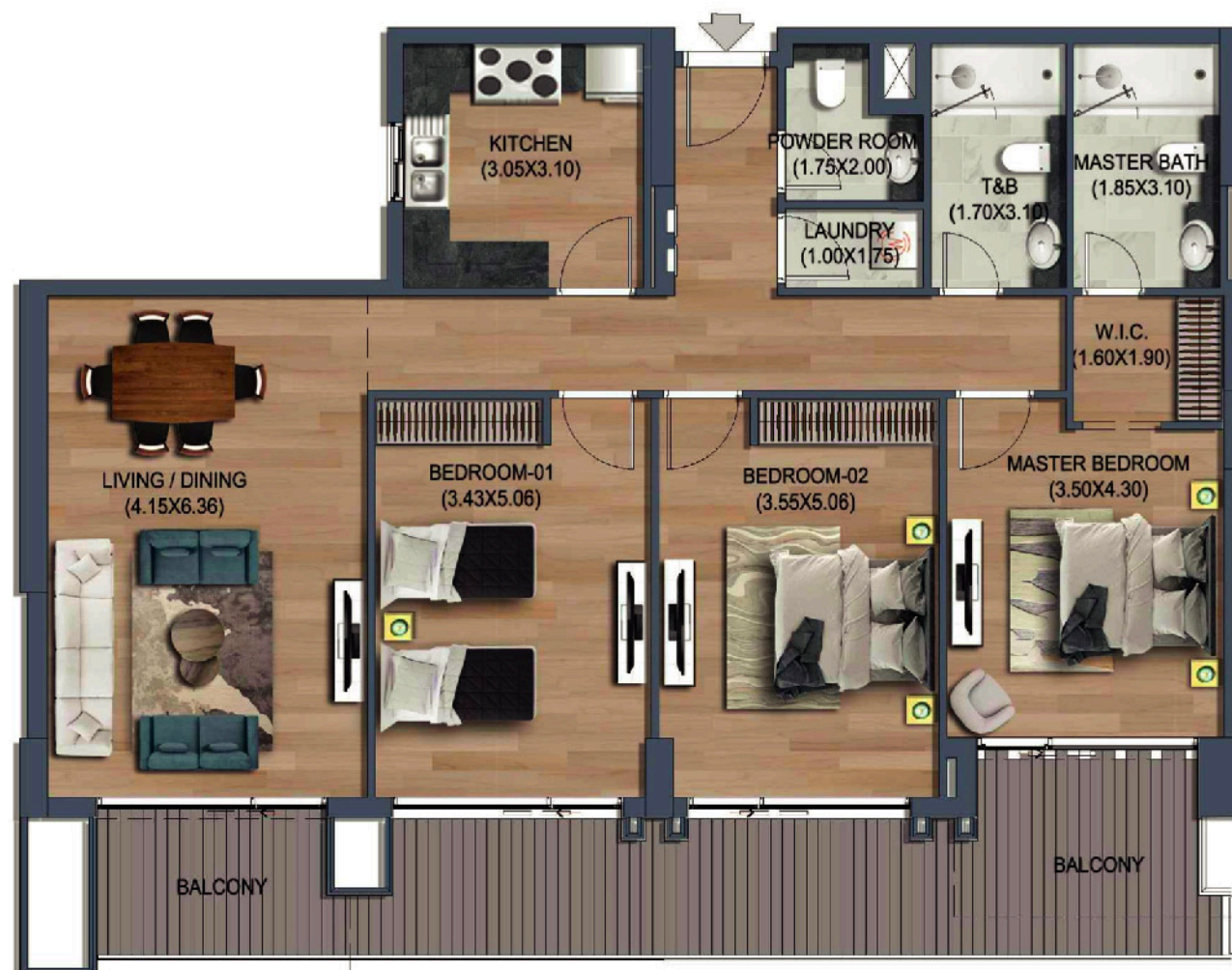


FLAT TYPE	= 3 BEDROOM - TYPE E (R3-E)
NO. OF UNITS	= 2
FLAT AREA (W/O BALCONY)	= FROM 139.00 SQ.M. / 1,496.00 SQ.FT. TO = 141.00 SQ.M. / 1,518.00 SQ.FT.
BALCONY AREA	= 32.40 SQ.M. / 349.00 SQ.FT.
TOTAL NET AREA =	= FROM 172.00 SQ.M. / 1,851.00 SQ.FT. TO = 173.00 SQ.M. / 1,862.00 SQ.FT.

شقة مكونه من ثلاث غرفة نوم - النموذج F

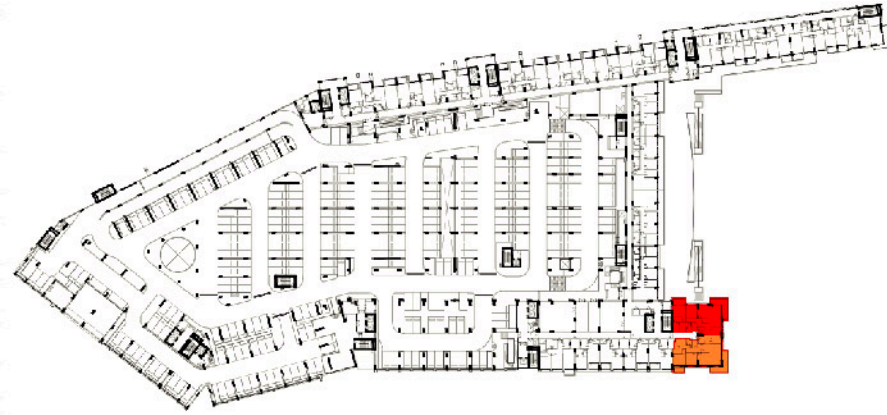


FOURTH FLOOR
FLAT NO. : 404

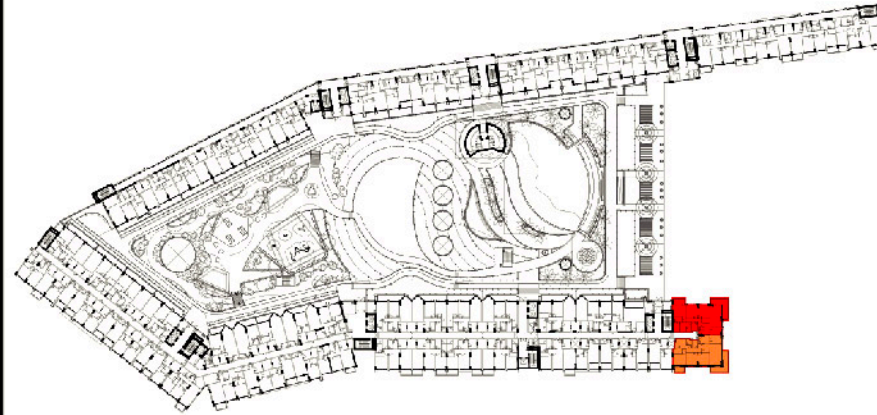


FLAT TYPE	= 3 BEDROOM - TYPE F (R3-F)
NO. OF UNITS	= 1
FLAT AREA (W/O BALCONY)	= 136.59 SQ.M. / 1,470.00 SQ.FT.
BALCONY AREA	= 33.51 SQ.M. / 361.00 SQ.FT.
TOTAL NET AREA =	= 170.10 SQ.M. / 1,831.00 SQ.FT.

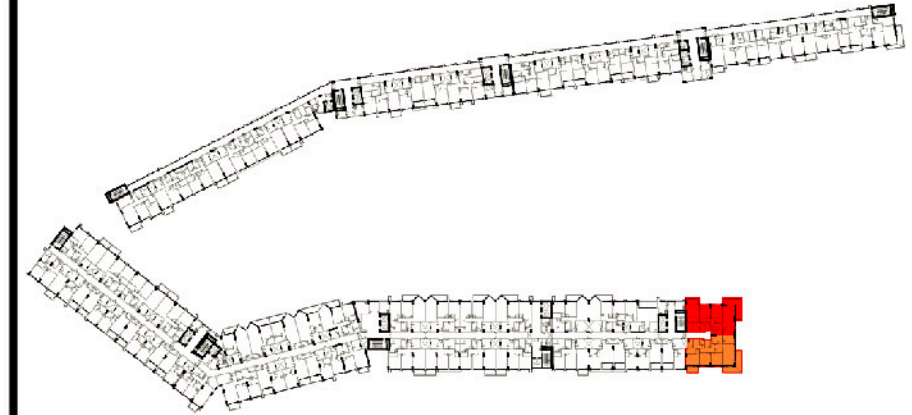
شقة مكونة من ثلاث غرفة نوم - النموذج G



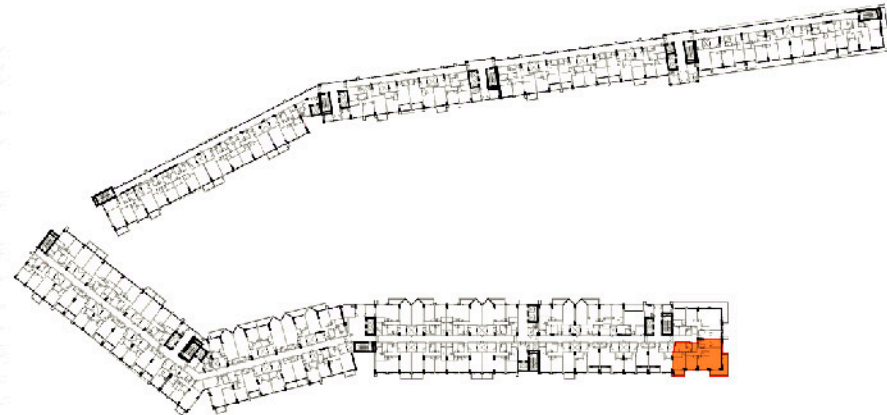
FIRST & SECOND PODIUM FLOOR
FLATS NO.: P118, P119, P218, P219



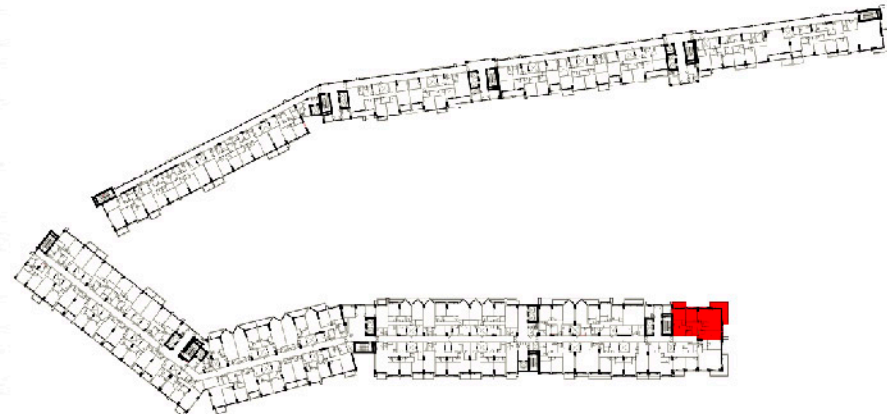
FIRST FLOOR
FLATS NO.: 154, 160



TYPICAL 2ND TO 3RD & 5TH TO 8TH FLOOR
FLATS NO.: 254, 260, 354, 360, 554, 560, 654, 660, 754, 760, 854, 860



FOURTH FLOOR
FLAT NO.: 460

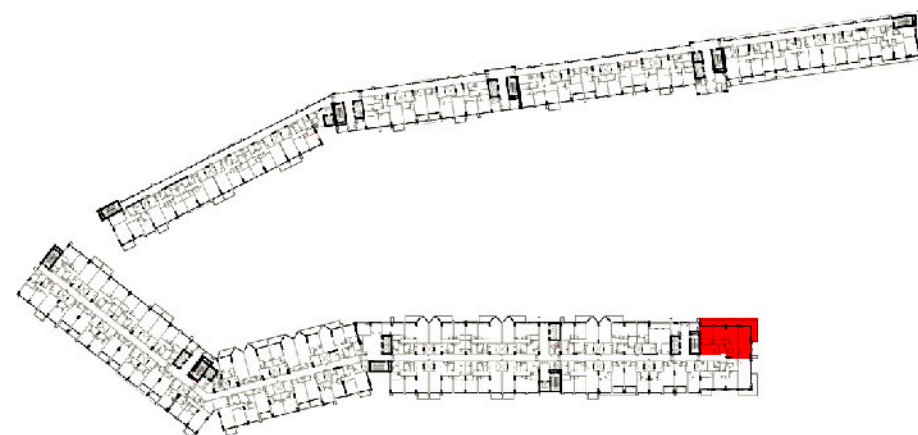


NINTH FLOOR
FLAT NO.: 944



FLAT TYPE	= 3 BEDROOM - TYPE G (R3-G)
NO. OF UNITS	= 20
FLAT AREA (W/O BALCONY)	= FROM 146.00 SQ.M. / 1,572.00 SQ.FT. TO 150.00 SQ.M. / 1,615.00 SQ.FT.
BALCONY AREA	= FROM 30.00 SQ.M. / 323.00 SQ.FT. TO 31.00 SQ.M. / 334.00 SQ.FT.
TOTAL NET AREA =	= FROM 177.00 SQ.M. / 1,905.00 SQ.FT. TO 181.00 SQ.M. / 1,948.00 SQ.FT.

شقة مكونه من ثلاث غرفة نوم - النموذج H



FOURTH FLOOR
FLAT NO. : 454



FLAT TYPE	= 3 BEDROOM - TYPE H (R3-H)
NO. OF UNITS	= 1
FLAT AREA (W/O BALCONY)	= 149.93 SQ.M. / 1,614.00 SQ.FT.
BALCONY AREA	= 46.65 SQ.M. / 502.00 SQ.FT.
TOTAL NET AREA =	= 196.58 SQ.M. / 2,116.00 SQ.FT.

شقة مكونه من ثلاث غرفة نوم - النموذج I

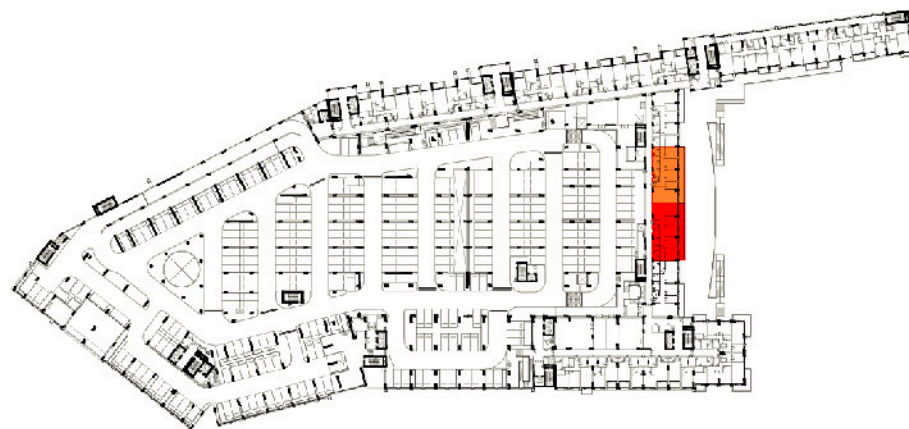


FIRST & SECOND PODIUM FLOOR
FLATS NO. : P120, P220

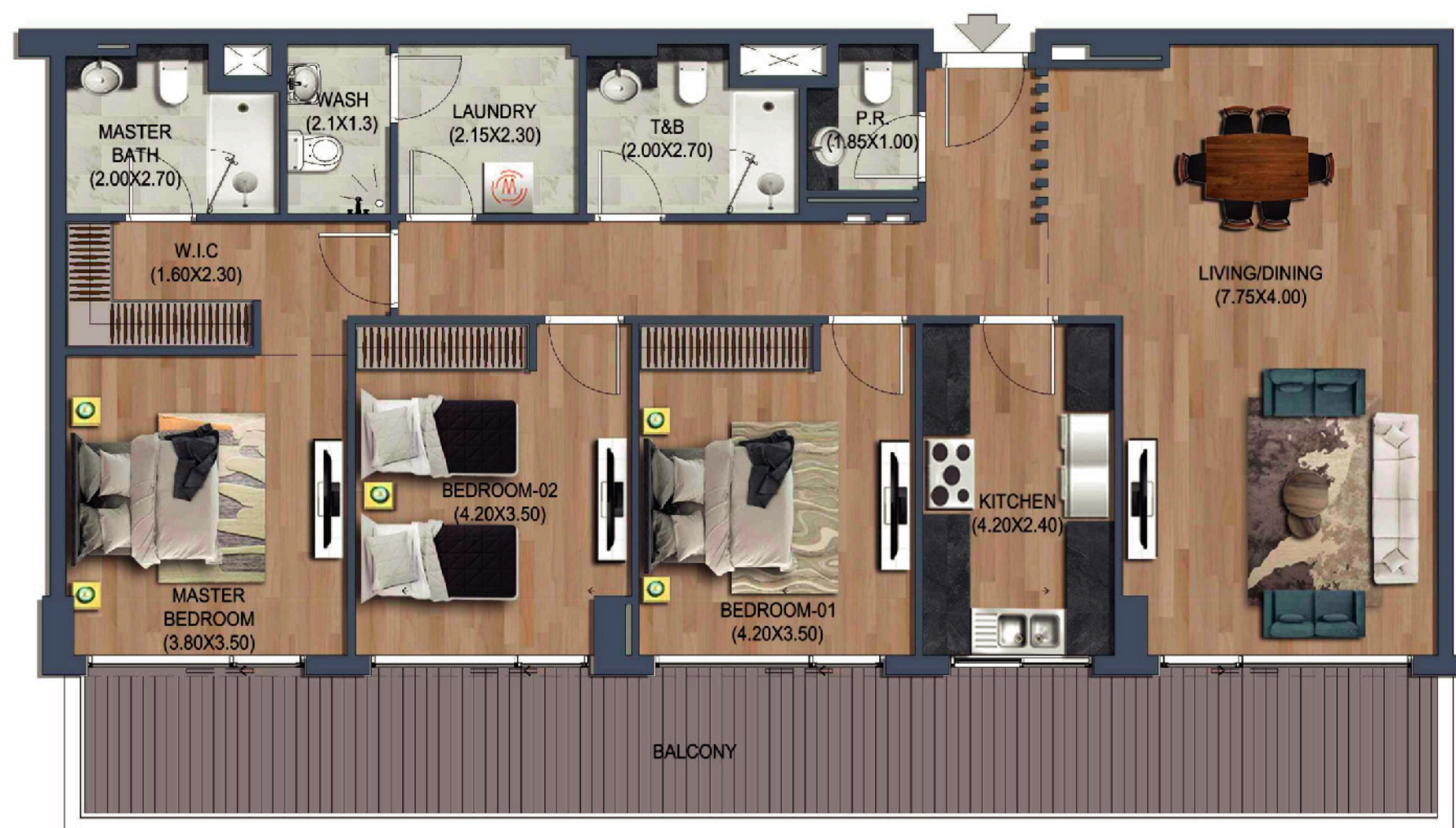


FLAT TYPE	= 3 BEDROOM - TYPE I (R3-I)
NO. OF UNITS	= 2
FLAT AREA (W/O BALCONY)	= 144.19 SQ.M. / 1,552.00 SQ.FT.
BALCONY AREA	= 21.08 SQ.M. / 227.00 SQ.FT.
TOTAL NET AREA =	= 165.27 SQ.M. / 1779.00 SQ.FT.

شقة مكونه من ثلاث غرفة نوم - النموذج J

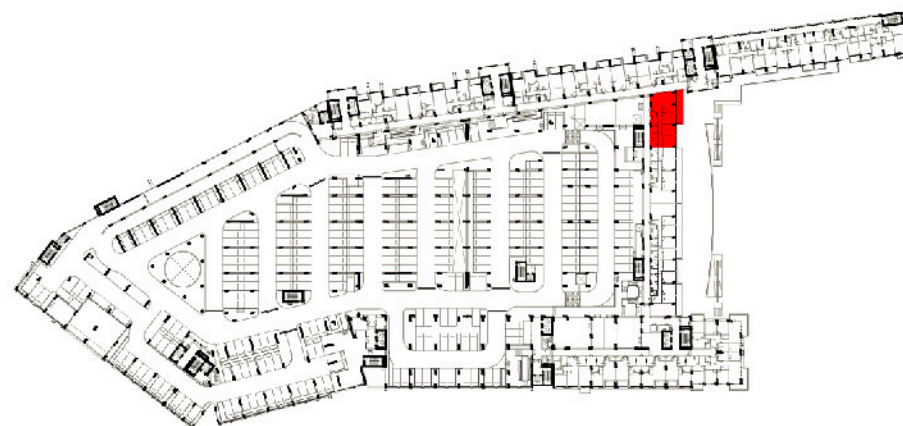


FIRST & SECOND PODIUM FLOOR
FLATS NO. : P121, P122, P221, P222



FLAT TYPE	= 3 BEDROOM - TYPE J (R3-J)
NO. OF UNITS	= 4
FLAT AREA (W/O BALCONY)	= 143.36 SQ.M. / 1,543.00 SQ.FT.
BALCONY AREA	= 35.40 SQ.M. / 381.00 SQ.FT.
TOTAL NET AREA =	= 178.76 SQ.M. / 1,924.00 SQ.FT.

شقة مكونه من ثلاث غرفة نوم - النموذج K

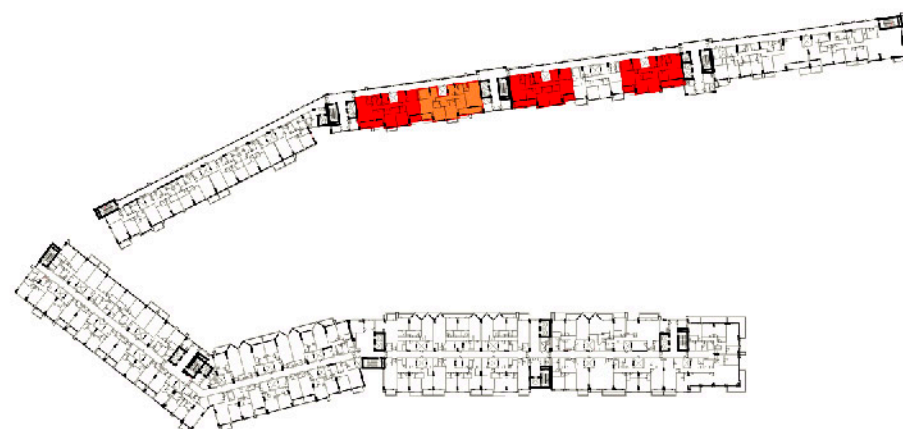


FIRST & SECOND PODIUM FLOOR
FLATS NO. : P123, P223



FLAT TYPE	= 3 BEDROOM - TYPE K (R3-K)
NO. OF UNITS	= 2
FLAT AREA (W/O BALCONY)	= 138.91 SQ.M. / 1,495.00 SQ.FT.
BALCONY AREA	= 21.21 SQ.M. / 228.00 SQ.FT.
TOTAL NET AREA =	= 160.12 SQ.M. / 1,724.00 SQ.FT.

شقة مكونة من ثلاث غرفة نوم - النموذج L

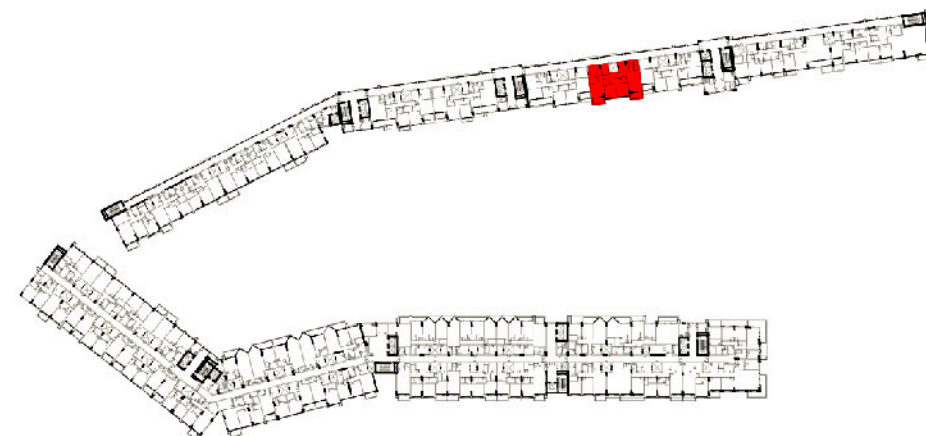


NINTH FLOOR
FLATS NO. : 903, 905, 906, 907



FLAT TYPE	= 3 BEDROOM - TYPE L (R3-L)
NO. OF UNITS	= 4
FLAT AREA (W/O BALCONY)	= FROM 168.00 SQ.M. / 1,808.00 SQ.FT. TO 172.00 SQ.M. / 1,851.00 SQ.FT.
BALCONY AREA	= FROM 20.00 SQ.M. / 215.00 SQ.FT. TO 23.00 SQ.M. / 248.00 SQ.FT.
TOTAL NET AREA =	= FROM 190.00 SQ.M. / 2,045.00 SQ.FT. TO 194.00 SQ.M. / 2,088.00 SQ.FT.

شقة مكونه من ثلاث غرفة نوم - النموذج M

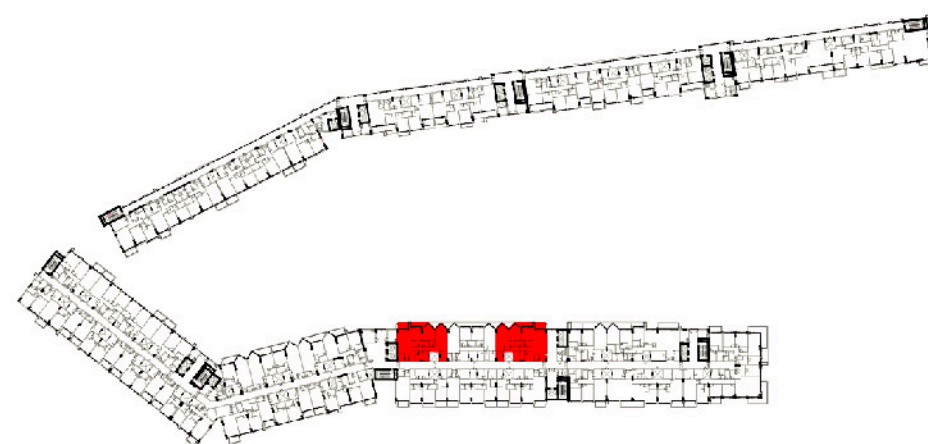


NINTH FLOOR
FLAT NO. : 904



FLAT TYPE	= 3 BEDROOM - TYPE M (R3-M)
NO. OF UNITS	= 1
FLAT AREA (W/O BALCONY)	= 152.23 SQ.M. / 1,639.00 SQ.FT.
BALCONY AREA	= 15.18 SQ.M. / 163.00 SQ.FT.
TOTAL NET AREA =	= 167.41 SQ.M. / 1,802.00 SQ.FT.

شقة مكونه من ثلاث غرفة نوم - النموذج N

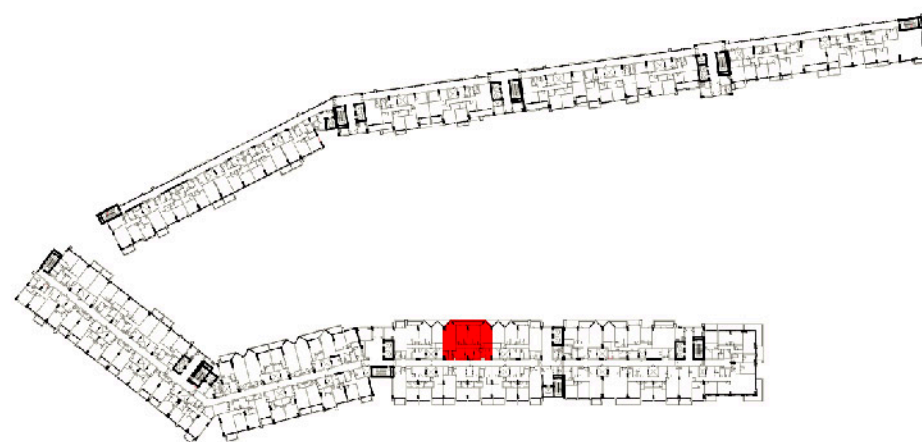


NINTH FLOOR
FLATS NO. : 936, 938



FLAT TYPE	= 3 BEDROOM - TYPE N (R3-N)
NO. OF UNITS	= 2
FLAT AREA (W/O BALCONY)	= FROM 153.00 SQ.M. / 1,647.00 SQ.FT. TO 155.00 SQ.M. / 1,668.00 SQ.FT.
BALCONY AREA	= FROM 13.20 SQ.M. / 142.00 SQ.FT. TO 13.30 SQ.M. / 143.00 SQ.FT.
TOTAL NET AREA =	= FROM 166.00 SQ.M. / 1,787.00 SQ.FT. TO 168.00 SQ.M. / 1,808.00 SQ.FT.

شقة مكونه من ثلاث غرفة نوم - النموذج ○

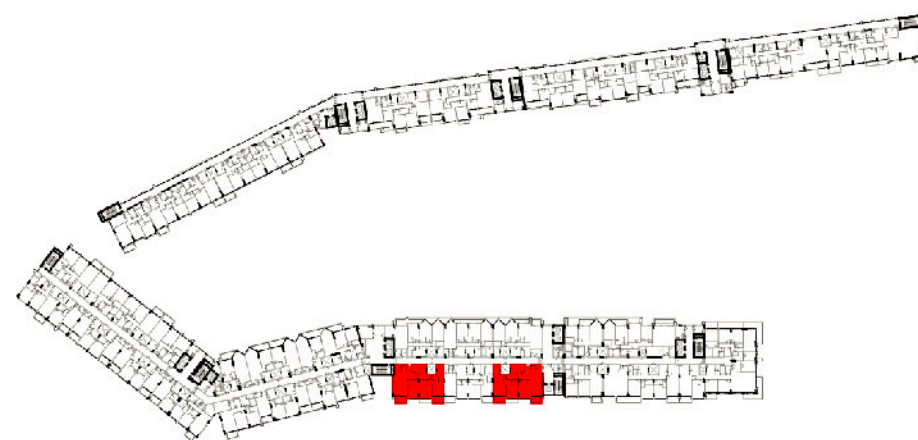


NINTH FLOOR
FLAT NO. : 937



FLAT TYPE	= 3 BEDROOM - TYPE O (R3-O)
NO. OF UNITS	= 1
FLAT AREA (W/O BALCONY)	= 162.93 SQ.M. / 1,754.00 SQ.FT.
BALCONY AREA	= 11.44 SQ.M. / 123.00 SQ.FT.
TOTAL NET AREA =	= 174.37 SQ.M. / 1,877.00 SQ.FT.

شقة مكونه من ثلاث غرفة نوم - النموذج P

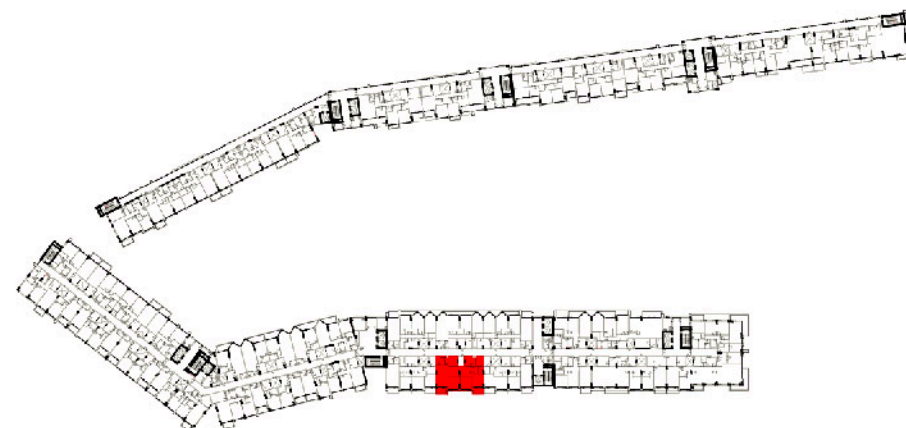


NINTH FLOOR
FLATS NO. : 939, 941

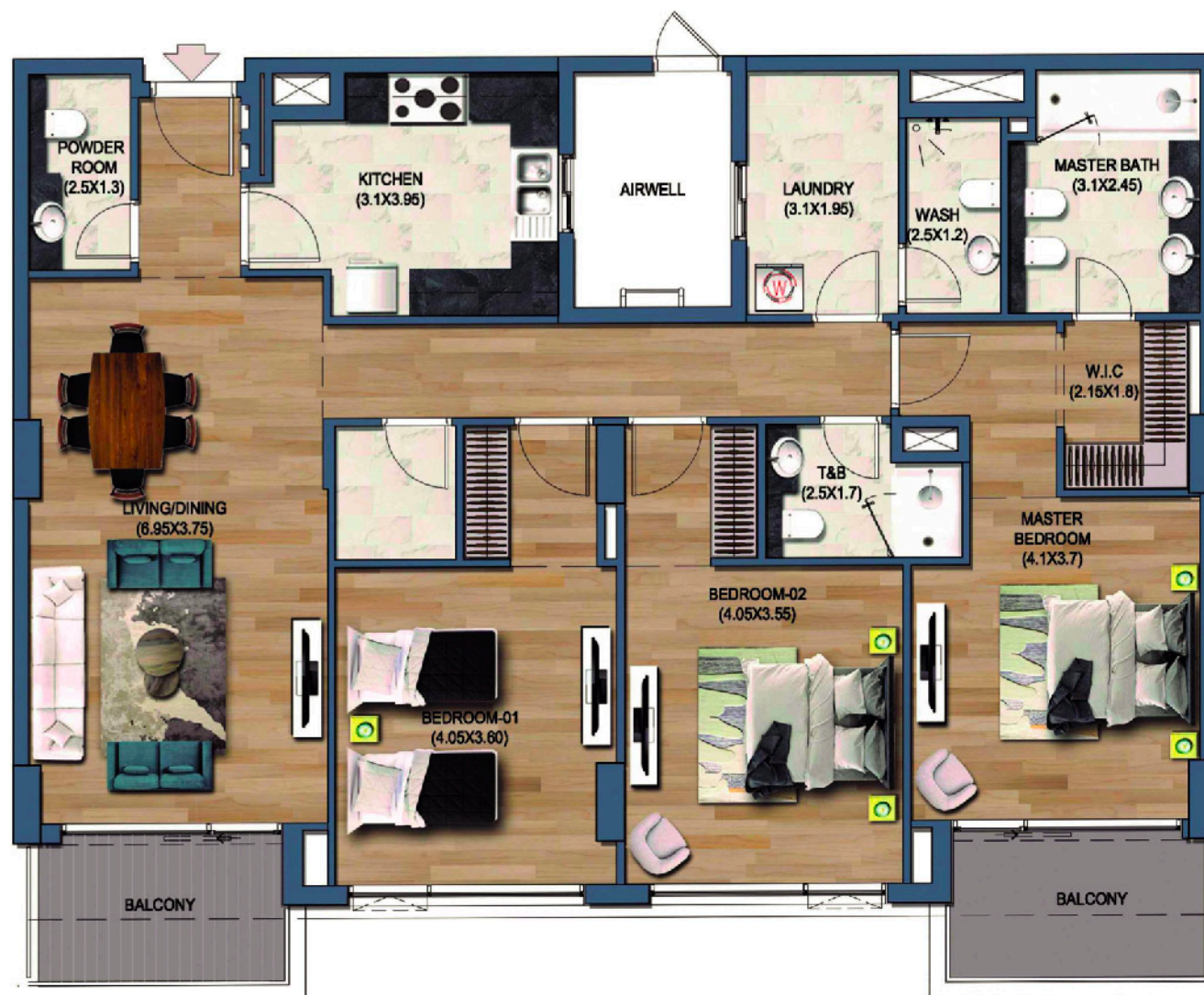


FLAT TYPE	= 3 BEDROOM - TYPE P (R3-P)
NO. OF UNITS	= 2
FLAT AREA (W/O BALCONY)	= FROM 148.00 SQ.M. / 1,593.00 SQ.FT. TO 151.00 SQ.M. / 1,625.00 SQ.FT.
BALCONY AREA	= FROM 14.40 SQ.M. / 155.00 SQ.FT. TO 14.60 SQ.M. / 157.00 SQ.FT.
TOTAL NET AREA =	= FROM 162.00 SQ.M. / 1,744.00 SQ.FT. TO 165.00 SQ.M. / 1,776.00 SQ.FT.

شقة مكونة من ثلاث غرف نوم - النموذج Q



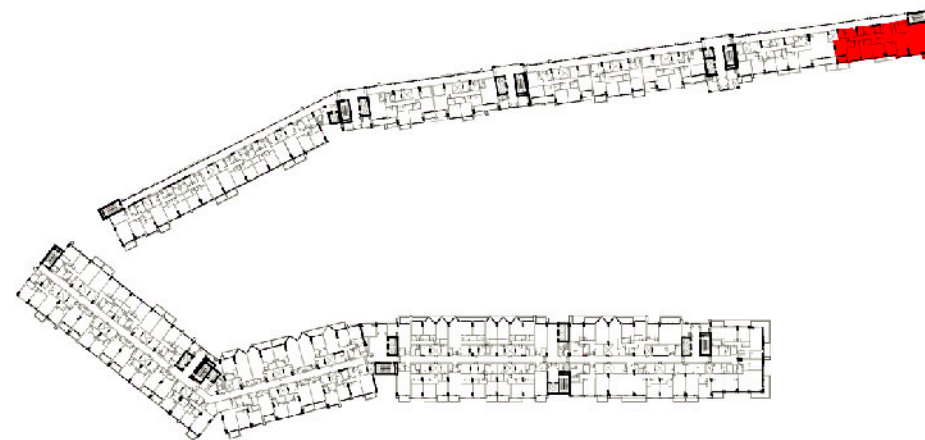
NINTH FLOOR
FLAT NO. : 940



FLAT TYPE	= 3 BEDROOM - TYPE Q (R3-Q)
NO. OF UNITS	= 1
FLAT AREA (W/O BALCONY)	= 149.64 SQ.M. / 1,611.00 SQ.FT.
BALCONY AREA	= 14.49 SQ.M. / 156.00 SQ.FT.
TOTAL NET AREA =	= 164.13 SQ.M. / 1,767.00 SQ.FT.

نماذج من الشقق المكونة من اربع غرف
نوم وصاله - بنتهاوس

شقه مكونه من اربع غرف نوم - النموذج A

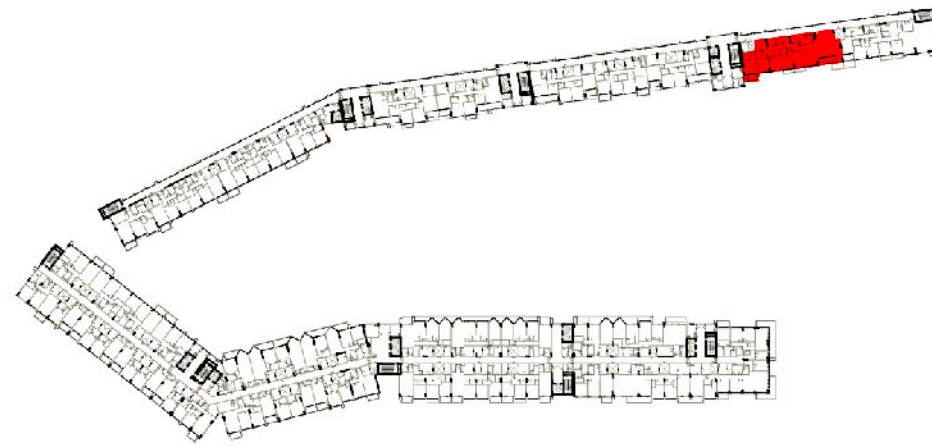


NINTH FLOOR
FLAT NO. : 901



FLAT TYPE	= 4 BEDROOM - TYPE A (R4-A)
NO. OF UNITS	= 1
FLAT AREA (W/O BALCONY)	= 285.83 SQ.M. / 3,077.00 SQ.FT.
BALCONY AREA	= 26.99 SQ.M. / 291.00 SQ.FT.
TOTAL NET AREA =	= 312.82 SQ.M. / 3,367.00 SQ.FT.

شقه مكونه من اربع غرف نوم - النموذج B

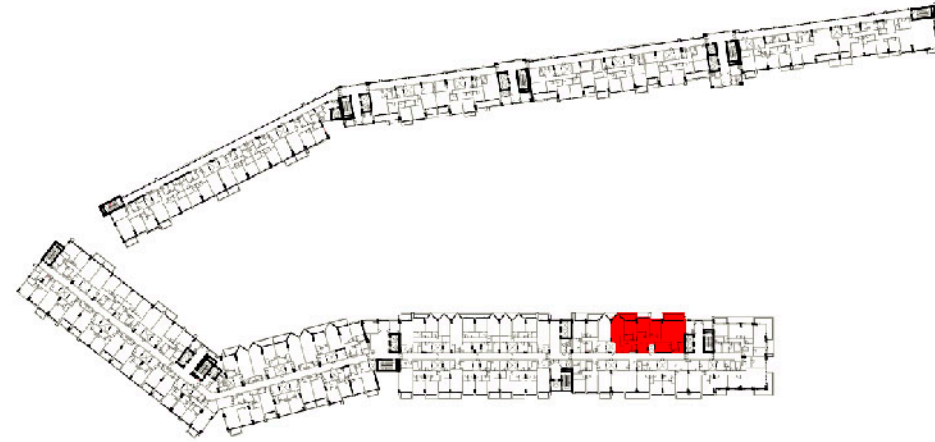


NINTH FLOOR
FLAT NO. : 902



FLAT TYPE	= 4 BEDROOM - TYPE B (R4-B)
NO. OF UNITS	= 1
FLAT AREA (W/O BALCONY)	= 267.58 SQ.M. / 2,880.00 SQ.FT.
BALCONY AREA	= 22.54 SQ.M. / 243.00 SQ.FT.
TOTAL NET AREA =	= 290.12 SQ.M. / 3,123.00 SQ.FT.

شقه مكونه من اربع غرف نوم - النموذج C

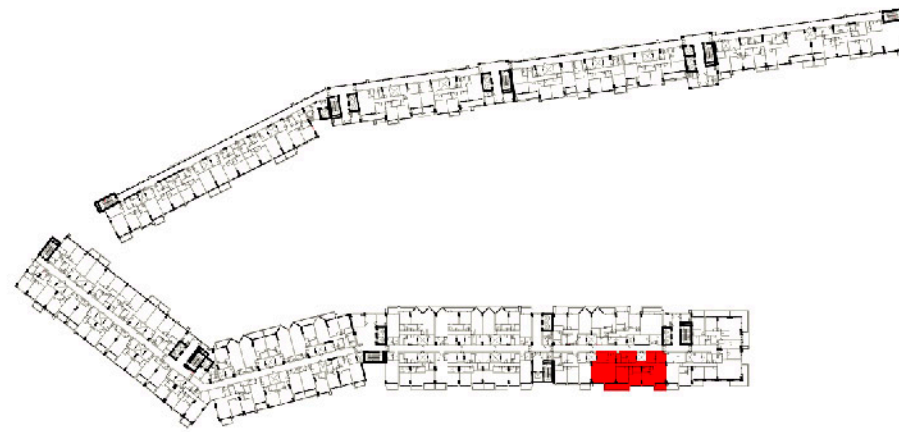


NINTH FLOOR
FLAT NO. : 943

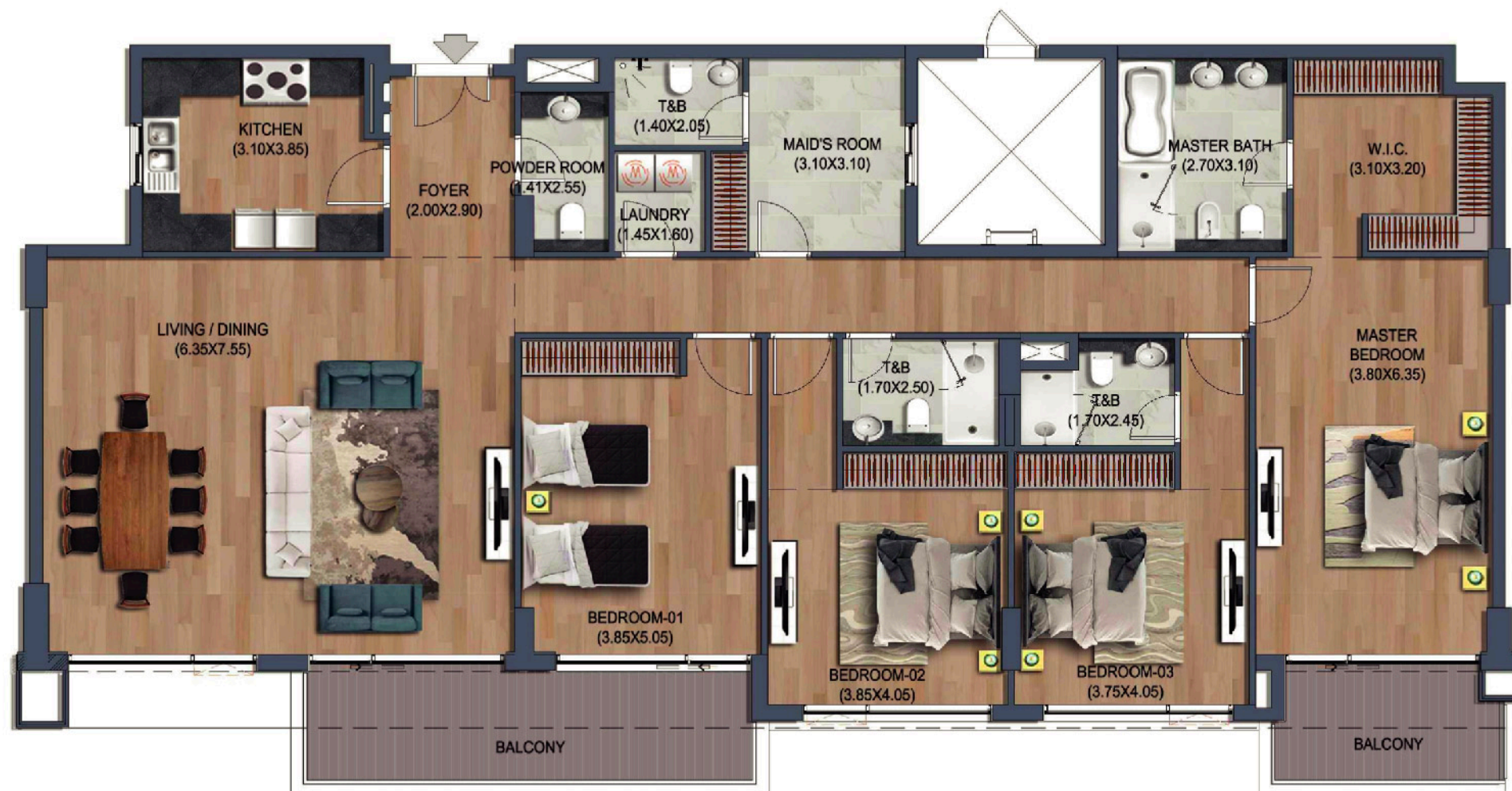


FLAT TYPE	= 4 BEDROOM - TYPE C (R4-C)
NO. OF UNITS	= 1
FLAT AREA (W/O BALCONY)	= 218.22 SQ.M. / 2,349.00 SQ.FT.
BALCONY AREA	= 22.29 SQ.M. / 240.00 SQ.FT.
TOTAL NET AREA =	= 240.51 SQ.M. / 2,589.00 SQ.FT.

شقه مكونه من اربع غرف نوم - النموذج D

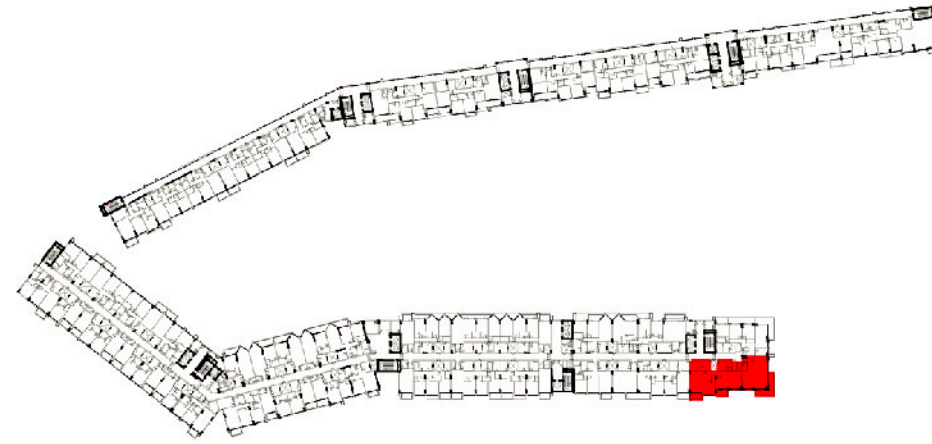


NINTH FLOOR
FLAT NO. : 946



FLAT TYPE	= 4 BEDROOM - TYPE D (R4-D)
NO. OF UNITS	= 1
FLAT AREA (W/O BALCONY)	= 225.23 SQ.M. / 2,424.00 SQ.FT.
BALCONY AREA	= 22.68 SQ.M. / 244.00 SQ.FT.
TOTAL NET AREA =	= 247.91 SQ.M. / 2,669.00 SQ.FT.

شقه مكونه من اربع غرف نوم - النموذج E



NINTH FLOOR
FLAT NO. : 947



FLAT TYPE	= 4 BEDROOM - TYPE E (R4-E)
NO. OF UNITS	= 1
FLAT AREA (W/O BALCONY)	= 223.38 SQ.M. / 2,404.00 SQ.FT.
BALCONY AREA	= 37.38 SQ.M. / 402.00 SQ.FT.
TOTAL NET AREA =	= 260.76 SQ.M. / 2,807.00 SQ.FT.

تواصل معنا

+٩٧١ ٦٥٩ ٩٩٩ ٠٩

f Asas Developments

asasdevelopments

@ASASDevelopments

www.asasproperties.ae

ص. ب. رقم ٤ الشارقة، الإمارات العربية المتحدة